

DOUBLESTAR

CREATE THE NO.1 BRAND OF SAFE PCR TIRES IN THE WORLD



Doublestar Tire



Doublestar Tire



Doublestar Tire

QINGDAO DOUBLESTAR OVERSEAS TRADING CO., LTD.

NO.5, Wenling Rd., Laoshan District, Qingdao, China

www.doublestartyre.com

PCR CATALOGUE



Brief Introduction of Doublestar Group

- A centurial rubber enterprise founded in 1921
- Create the NO.1 Brand of Safe PCR Tires in the World
- Top 500 Brand in Asia

As a nearly century-old rubber enterprise and the only state-owned listed company in tire industry of Shandong Province, Doublestar started a new journey of “Fulfilling Second Undertaking & Creating Doublestar A World Famous Brand” in 2014. Persisting the tenet of “First, Open & Innovation”, Doublestar is becoming an international enterprise group on the integration of tire manufacturing, intelligent equipment, intelligent logistics (Robot, cold-chain logistics, airport logistics) and intelligent cyclic utilization of wasted rubber as well as plastic.

In recent years, following the strategic deployment of Qingdao municipal party committee and municipal government, Doublestar completed environmental relocation and fulfilled the conversion from New Normal to New Strong State. Under the background of Internet+, Made in China 2025 and State-owned Enterprise Reform, Doublestar regenerates itself like the nirvana of phoenix. It closed down over 60% of backward production facilities and products, accelerated the conversion from old kinetic energy into new kinetic energy, and thus fulfilled the transformation from Sweat Enterprise to Intellectual Enterprise.

Furthermore, Doublestar takes the lead in innovating a management model of “Marketing Segmentation, Organization Platform, Operation Unit” in tire industry. As the first one to achieve all process operation of Industry 4.0 smart factory and the first one to create open ecosystem of Service 4.0 and Industry 4.0, Doublestar completed intelligent transformation and wins numerous awards. In three consecutive years, Doublestar was rated as



★ Doublestar Global Technology & Demand Innovation Center ▼

“Industrial Brand Cultivation Model Enterprise”, “Technology Innovation Model Enterprise”, “National Quality Bench-marking Enterprise”, “Green Tire Pilot Intelligent Manufacturing Model Enterprise” and “Service-oriented Manufacturing Model Enterprise”, which makes it the only one among all Chinese enterprises to gain the five national honors authorized by Chinese Ministry of Industry and Information Technology in recent five years, and the only model enterprise of the whole industrial chain from the brand, technology, quality, manufacturing, service.



★ National proving ground ▼

The World's First "Industry 4.0" Smart Tire Factory





★ Doublestar R&D Strength



★ Doublestar Drift Team

Product Quality Certificate



TS 16949



ISO9001



SNI



E4-30R



E4-117R



GCC



DOT



INMETRO



SASO



CONTENT

SERIAL PRODUCTS

UHP	
DSU02	01
DU01	04
SUV	
DSS02	05
DS01 / DS01T	06
MT / AT	
T01	07
W01	08
HP	
DH01	09
DH02	10
DH05	11
LT / C	
DS805	12
DL01	13
DLA01	14

MILITARY TIRES

DS315	19
DS703	19
DS706	20
DS766	20

SNOW TIRES

DW01	15
DW02	16
DW05	18



VEHICLE MODEL
LUXURY CAR
ROAD CONDITION
Urban Pavement

CROSSLEADER
DSU02



CHARACTERISTICS

- AFB silencing block design in the groove can break the natural frequency of air flow and reduce the noise.
- Pore-free sidewall design without bumps for nice appearance.
- The unique design of "water absorber" increases the absorption capacity of water on the ground and improves the driving stability of vehicles in straight lines and curves on wet slippery road.
- Four longitudinal groove and the inside open shoulder groove design, provide the excellent handling and drainage performance; and the braking distance of 100km is reduced by more than 7% on wetland.
- Closed lateral shoulder groove can reduce air flow noise and improve the stability of outer wheels turning.
- (Optional) Adding a layer of self-healing nano-smart material to the inner wall to ensure no air leaking after puncture.

Rim	Tire Size	Load Index	Speed Grade	Load Range	Section Width (mm)	Overall Diameter (mm)	Tread Depth (mm)	Std. Rim	Standard Pressure (Kpa)	
26	* 295/30R26	107	Y	XL	301	838	10.5J	8.0	290	
	24	* 295/35R24	110	Y	XL	301	816	10.5J	8.0	290
		* 295/30R24	104	Y	XL	301	788	10.5J	8.0	290
22	* 255/30R24	97	W	XL	260	764	9.0J	8.0	290	
	* 285/45R22	114	Y	XL	285	815	9.5J	8.0	290	
	* 285/40R22	110	Y	XL	290	787	10.0J	8.0	290	
	* 285/35R22	106	Y	XL	290	759	10.0J	8.0	290	
	* 265/40R22	106	W	XL	271	771	9.5J	8.0	290	
	* 265/35R22	102	W	XL	271	745	9.5J	8.0	290	
	* 245/30R22	92	W	XL	248	707	8.5J	8.0	290	
21	* 235/30R22	90	W	XL	241	701	8.5J	8.0	290	
	* 325/30R21	108	Y	XL	331	729	11.5J	8.0	290	
	* 285/35R21	105	Y	XL	290	733	10.0J	8.0	290	
	* 275/45R21	110	W	XL	273	781	9.0J	8.0	290	
	* 265/40R21	105	W	XL	271	745	9.5J	8.0	290	
20	* 245/35R21	96	Y	XL	248	705	8.5J	8.0	290	
	* 315/35R20	110	Y	XL	320	728	11.0J	8.0	290	
	* 285/50R20	116	W	XL	297	794	9.0J	8.0	290	
	285/35R20	104	W	XL	290	708	10.0J	8.0	290	
	285/30R20	99	W	XL	290	680	10.0J	8.0	290	
	275/55R20	117	W/V	XL	284	810	8.5J	8.0	290	
	275/45R20	106	W	SL	273	756	9.0J	8.0	250	
	275/40R20	105	W	XL	278	703	9.5J	8.0	290	
	* 275/35R20	102	W	XL	278	700	9.5J	8.0	290	
	* 275/30R20	97	W	XL	278	674	9.5J	8.0	290	
	265/50R20	111	W/V	XL	277	774	8.5J	8.0	290	
	265/45R20	108	W	XL	266	746	9.0J	8.0	290	
	265/35R20	99	W	XL	271	694	9.5J	8.0	290	
	255/50R20	109	W/V	XL	265	764	8.0J	8.0	290	
	* 255/45R20	105	W	XL	255	738	8.5J	8.0	290	
	255/40R20	101	W	XL	260	712	9.0J	8.0	290	
	* 255/35R20	97	W	XL	260	686	9.0J	8.0	290	
	245/50R20	105	W/V	XL	253	754	7.5J	8.0	290	

* New product will be launched in the fourth quarter.

CROSSLEADER
DSU02



Rim	Tire Size	Load Index	Speed Grade	Load Range	Section Width (mm)	Overall Diameter (mm)	Tread Depth (mm)	Std. Rim	Standard Pressure (Kpa)	
20	245/45R20	103	W	XL	243	728	8.0J	8.0	290	
	* 245/40R20	99	W	XL	248	704	8.5J	8.0	290	
	* 245/35R20	95	W	XL	248	680	8.5J	8.0	290	
	245/30R20	90	W	XL	248	656	8.5J	8.0	290	
	235/35R20	92	W	XL	241	672	8.5J	8.0	290	
	235/30R20	88	W	XL	241	650	8.5J	8.0	290	
	225/35R20	90	W	XL	230	666	8.0J	8.0	290	
	* 225/30R20	85	W	XL	230	644	8.0J	8.0	290	
	19	* 285/45R19	111	Y	XL	285	739	9.5J	8.0	290
		285/40R19	107	W	XL	290	711	10.0J	8.0	290
* 285/35R19		103	W	XL	290	683	10.0J	8.0	290	
* 275/55R19		111	W	SL	284	785	8.5J	8.0	250	
275/45R19		108	W	XL	273	731	9.0J	8.0	290	
275/40R19		105	W	XL	278	703	9.5J	8.0	290	
275/35R19		100	W	XL	278	675	9.5J	8.0	290	
265/50R19		110	W/V	XL	277	749	8.5J	8.0	290	
265/35R19		98	W	XL	271	669	9.5J	8.0	290	
* 265/30R19		93	W	XL	271	643	9.5J	8.0	290	
255/55R19		111	W/V	XL	265	763	8.0J	8.0	290	
255/50R19		107	W	XL	265	739	8.0J	8.0	290	
255/45R19		104	W	XL	255	713	8.5J	8.0	290	
255/40R19		100	W	XL	260	687	9.0J	8.0	290	
18		255/35R19	96	W	XL	260	661	9.0J	8.0	290
		* 255/30R19	91	Y	XL	260	637	9.0J	8.0	290
		245/55R19	103	V	SL	253	753	7.5J	8.0	250
		* 245/45R19	102	W	XL	243	703	8.0J	8.0	290
		245/40R19	98	W	XL	248	679	8.5J	8.0	290
		245/35R19	93	W	XL	248	655	8.5J	8.0	290
	235/55R19	105	W	XL	245	741	7.5J	8.0	290	
	235/50R19	103	W	XL	245	719	7.5J	8.0	290	
	235/40R19	96	W	XL	241	671	8.5J	8.0	290	
	* 235/35R19	91	W	XL	241	647	8.5J	8.0	290	
17	225/45R19	96	W	XL	225	685	7.5J	8.0	290	
	225/40R19	93	W	XL	230	663	8.0J	8.0	290	
	225/35R19	88	W	XL	230	641	8.0J	8.0	290	
	* 215/35R19	85	Y	XL	218	633	7.5J	8.0	290	
	275/40R18	103	W	XL	278	677	9.5J	8.0	290	
	* 265/40R18	101	W	XL	271	669	9.5J	8.0	290	
	* 265/35R18	97	W	XL	271	643	9.5J	8.0	290	
	255/55R18	105	V	SL	265	737	8.0J	8.0	250	
	255/45R18	103	W	XL	255	687	8.5J	8.0	290	
	255/40R18	99	W	XL	260	661	9.0J	8.0	290	
18	255/35R18	94	W	XL	260	635	9.0J	8.0	290	
	245/45R18	100	W	XL	243	677	8.0J	8.0	290	
	245/40R18	97	W	XL	248	653	8.5J	8.0	290	
	235/55R18	104	W/V	XL	245	715	7.5J	8.0	290	
	235/50R18	101	W	XL	245	693	7.5J	8.0	290	
	235/45R18	98	W	XL	236	669	8.0J	8.0	290	
	235/40R18	95	W	XL	241	645	8.5J	8.0	290	
	225/55R18	102	W/V	XL	233	705	7.0J	8.0	290	
	* 225/50R18	99	W/V	XL	233	683	7.0J	8.0	290	
	225/45R18	95	W	XL	225	659	7.5J	8.0	290	
225/40R18	92	W	XL	230	637	8.0J	8.0	290		
17	215/45R18	93	W	XL	213	651	7.0J	8.0	290	
	* 215/40R18	89	W	XL	218	629	7.5J	8.0	290	
	* 215/35R18	84	W	XL	218	607	7.5J	8.0	290	
	* 245/45R17	99	W	XL	243	652	8.0J	8.0	290	

* New product will be launched in the fourth quarter.

CROSSLIDER
DSU02



Rim	Tire Size	Load Index	Speed Grade	Load Range	Section Width (mm)	Overall Diameter (mm)	Tread Depth (mm)	Std.Rim	Standard Pressure (Kpa)
17	245/40R17	95	W	XL	248	628	8.5J	8.0	290
	235/55R17	103	W/V	XL	245	690	7.5J	8.0	290
	235/50R17	100	W/V	XL	245	668	7.5J	8.0	290
	235/45R17	97	W	XL	236	644	8.0J	8.0	290
	225/55R17	97	W	SL	233	680	7.0J	8.0	250
	225/50R17	98	W	XL	233	658	7.0J	8.0	290
	225/45R17	94	W	XL	225	634	7.5J	8.0	290
	215/55R17	94	V	SL	226	668	7.0J	8.0	250
	215/50R17	95	W	XL	226	648	7.0J	8.0	290
	215/45R17	91	W	XL	213	626	7.0J	8.0	290
	* 215/40R17	87	W	XL	218	604	7.5J	8.0	290
	205/55R17	95	W/V	XL	214	658	6.5J	8.0	290
	205/50R17	89	V	SL	214	638	6.5J	8.0	250
205/45R17	88	W	XL	206	616	7.0J	8.0	290	
* 205/40R17	84	W	XL	212	596	7.5J	8.0	290	
16	225/55R16	99	W/V	XL	233	654	7.0J	8.0	290
	225/50R16	96	W/V	XL	233	632	7.0J	8.0	290
	215/55R16	97	V	XL	226	642	7.0J	8.0	290
	205/55R16	91	V	SL	214	632	6.5J	8.0	250
	* 205/45R16	87	W	XL	206	590	7.0J	8.0	290

* New product will be launched in the fourth quarter.



DU01



VEHICLE MODEL
LUXURY CAR
ROAD CONDITION
Urban Pavement

CHARACTERISTICS

- Four longitudinal grooves are engineered to greatly improve the drainage and grip on wet condition, meanwhile, helping deliver impressive handling performance.
- The inner and outer sides of the contact area are designed with the proportion of 45:55 to help balance the safety in wet condition and the cornering stability.
- Application of contacting print technology helps ensure the handling stability when cornering.
- Wider shoulder pattern design to guarantee the stability of longhaul driving or cornering.

Rim	Tire Size	Load Index	Speed Grade	Load Range	Section Width (mm)	Overall Diameter (mm)	Tread Depth (mm)	Std.Rim	Standard Pressure (Kpa)			
26	* 305/30R26	109	V	XL	313	844	8.0	11.0J	290	/	/	/
24	* 305/35R24	112	V	XL	313	824	8.0	11.0J	290	/	/	/
22	305/45R22	118	V	XL	303	833	8.0	10.0J	290	/	/	/
	305/40R22	114	V	XL	313	803	8.0	11.0J	290	/	/	/
	265/35R22	102	V	XL	271	745	8.0	9.5J	290	/	/	/
21	295/35R21	103	W	SL	301	739	8.0	10.5J	250	/	/	/
19	255/40R19	100	W	XL	260	687	8.0	8.0J	290	/	/	/
18	245/50R18	100	V	SL	253	703	8.0	7.5J	250	71	C	C
	*245/45RF18	96	W	SL	243	677	8.0	8.0J	250	71	C	C
	245/45R18	96	W	SL	243	677	8.0	8.0J	250	71	C	C
	235/40R18	95	W	XL	241	645	8.0	8.5J	290	72	C	C
	225/45R18	91	W	SL	225	659	8.0	7.5J	250	72	C	C
* 205/45R18	86	W	SL	206	641	8.0	7.0J	290	/	/	/	
17	245/45R17	95	W	SL	243	652	8.0	8.0J	250	72	C	C
	235/50R17	96	W	SL	245	668	8.0	7.5J	250	72	C	C
	235/45R17	97	W	XL	236	644	8.0	8.0J	290	72	C	C
	*225/55RF17	97	W	SL	233	680	8.0	7.0J	250	72	C	C
	225/55R17	97	V	SL	233	680	8.0	7.0J	250	72	C	C
	225/50RF17	94	V	SL	233	658	8.0	7.0J	250	72	C	C
	225/50R17	94	V	SL	233	658	8.0	7.0J	250	72	C	C
	225/45RF17	91	W	SL	225	634	8.0	7.5J	250	72	C	C
	225/45R17	91	W	SL	225	634	8.0	7.5J	250	72	C	C
	215/55R17	94	V	SL	226	668	8.0	7.0J	250	72	C	C
	215/50R17	91	V	SL	226	648	8.0	7.0J	250	72	C	C
	215/45R17	91	W	XL	213	626	8.0	7.0J	290	72	C	C
	* 215/40R17	86	W	XL	218	604	8.0	7.5J	290	/	/	/
* 205/50R17	93	W	XL	214	638	8.0	6.5J	290	/	/	/	
* 205/45R17	88	W	XL	206	616	8.0	7.0J	290	/	/	/	
205/40R17	84	W	XL	212	596	8.0	7.5J	290	72	C	C	
16	215/60R16	99/95	V	XL/SL	221	664	8.0	6.5J	290/250	71	C	C
	215/55R16	97	V	XL	226	642	8.0	7.0J	290	72	C	C
	205/60R16	96/92	V	XL/SL	209	652	8.0	6.0J	290/250	72	C	C
	205/55R16	91	V	SL	214	632	8.0	6.5J	250	72	C	C
	* 205/45R16	87	W	XL	206	590	8.0	7.0J	290	/	/	/
195/60R16	89	V	SL	201	640	8.0	6.0J	250	71	C	C	
15	195/65R15	91	V	SL	201	635	8.0	6.0J	250	71	C	C
	195/60R15	92/88	H	XL/SL	201	615	8.0	6.0J	290/250	71	C	C
	195/55R15	89/85	V	XL/SL	201	595	8.0	6.0J	290/250	72	C	C

* New product will be launched in the fourth quarter.



VEHICLE MODEL
SUV
ROAD CONDITION
Urban Pavement

CROSSLIDER
DSS02



CHARACTERISTICS

- Herringbone shape steel sheet and reinforcing rib design improves the solid of the tread pattern, and improve braking performance by 5%.
- Pore-free sidewall design without bumps for nice appearance.
- Rolling resistance decreased by more than 10%, endurance enhance by 5%.
- Variable pitch pattern design, prevents the occurrence of resonance between the pattern block; and the noise is reduced by 15%.
- (Optional) Adding a layer of self-healing nano-smart material to the inner wall to ensure no air leaking after puncture.

Rim	Tire Size	Load Index	Speed Grade	Load Range	Section Width (mm)	Overall Diameter (mm)	Tread Depth (mm)	Std.Rim	Standard Pressure (Kpa)
18	235/60R18	107	H	XL	240	739	8.0	7.0J	290
	235/55R18	100	V	SL	245	715	8.0	7.5J	250
	225/60R18	100	H	SL	228	727	8.0	6.5J	250
	225/55R18	98	V	SL	233	705	8.0	7.0J	250
	215/55R18	95	H	SL	226	693	8.0	7.0J	250
17	265/65R17	112	T	SL	272	776	8.0	8.0J	250
	245/65R17	111	H	XL	248	750	8.0	7.0J	290
	235/65R17	108	T	XL	240	738	8.0	7.0J	290
	235/55R17	103	V	XL	245	690	8.0	7.5J	290
	225/65R17	102	H	SL	228	724	8.0	6.5J	250
	225/60R17	99	H	SL	228	702	8.0	6.5J	250
	215/60R17	96	H	SL	221	690	8.0	6.5J	250
	16	215/65R16	102	H	XL	221	686	8.0	6.5J



VEHICLE MODEL
SUV
ROAD CONDITION
Urban Pavement

CROSSLIDER
DS01/DS01T



CHARACTERISTICS

- Bonic leopard claw pattern design improves the handling safety by 10%.
- Main longitudinal grooves and oblique lateral grooves provide excellent high-speed and drainage performance. Thin grooves help improve stable grip.
- Semi-closed open shoulder is designed to provide quiet and comfortable ride experience.
- Design of optical and dynamic sidewall leads fashionable trend.
- (OPTIONAL) Design of shield shape on sidewall provides scratch resistance and strike resistance.

Rim	Tire Size	Load Index	Speed Grade	Load Range	Section Width (mm)	Overall Diameter (mm)	Tread Depth (mm)	Std.Rim	Standard Pressure (Kpa)			
20	* 275/55R20	113	V	SL	284	810	8.0	8.5J	250	/	/	/
	* 265/50R20	111	V	XL	277	774	8.0	8.5J	290	/	/	/
	255/55R20	110	V	XL	265	788	8.4	8.0J	290	72	E	C
	* 255/50R20	104	V	SL	265	764	8.0	8.0J	250	/	/	/
19	255/50R19	103	V	SL	265	739	8.4	8.0J	250	72	E	C
	245/55R19	103	V/H	SL	253	753	8.4	7.5J	250	71	E	C
	245/45R19	98	H	SL	243	703	8.4	8.0J	250	71	E	C
	235/50R19	103	V	XL	245	719	8.4	7.5J	290	71	E	C
18	265/60R18	110	H/T	SL	272	775	8.4	8.0J	250	72	E	C
	255/55R18	109/105	V/H	SL	265	737	8.4	8.0J	250	72	E	C
	235/65R18	110/106	H	XL/SL	240	763	8.4	7.0J	290/250	71	E	C
	DS01T 235/60R18	107/103	H	XL/SL	240	739	8.4	7.0J	290/250	71	E	C
	235/55R18	100	V/H	SL	245	715	8.4	7.5J	250	71	E	C
	235/50R18	101/97	V	XL/SL	245	693	8.4	7.5J	290/250	71	E	C
	DS01T 225/60R18	100	H/T	SL	228	727	8.4	6.5J	250	71	E	C
	225/55R18	98	V/H	SL	233	705	8.4	7.0J	250	71	E	C
17	275/65R17	115	T	SL	279	790	8.0	8.0J	250	/	/	/
	265/70R17	115	H/S	SL	272	804	8.7	8.0J	250	72	E	C
	265/65R17	112	T	SL	272	776	8.4	8.0J	250	72	E	C
	265/65R17	116	H	XL	272	776	8.4	8.0J	290	72	E	C
	245/65R17	107	T	SL	248	750	8.4	7.0J	250	71	E	C
	235/65R17	104	H/T	SL	240	738	8.4	7.0J	250	71	E	C
	235/60R17	102	H/T	SL	240	714	8.7	7.0J	250	71	E	C
	235/55R17	103/99	V	XL/SL	245	690	8.4	7.5J	290/250	71	E	C
	DS01T 225/65R17	102	H/T	SL	228	724	8.4	6.5J	250	71	E	C
	DS01T 225/60R17	99	T	SL	228	702	8.4	6.5J	250	71	E	C
	DS01T 225/55R17	101/97	H	XL/SL	233	680	8.4	7.0J	290/250	71	E	C
	DS01T 215/60R17	100	H	XL	221	690	8.4	6.5J	290	71	E	C
16	215/55R17	98/94	V	XL/SL	226	668	8.4	7.0J	290/250	71	E	C
	215/50R17	95	V	XL	226	648	8.4	7.0J	290	71	E	C
	275/70R16	114	H/S	SL	279	792	8.7	8.0J	250	72	E	C
	265/70R16	112	T/H	SL	272	778	8.7	8.0J	250	72	E	C
	245/75R16	111	S	SL	248	774	8.7	7.0J	250	71	E	C
	245/70R16	107	S	SL	248	750	8.7	7.0J	250	71	E	C
	235/70R16	106	S	SL	240	736	8.7	7.0J	250	71	E	C
	235/60R16	100	H/T	SL	240	688	8.4	7.0J	250	71	E	C
	225/70R16	103	S	SL	228	722	8.7	6.5J	250	71	E	C
	215/70R16LT	108/106	R	8PR/D	221	708	8.7	6.5J	450	71	E	C
	215/70R16LT	100/97	R	6PR/C	221	708	8.7	6.5J	350	71	E	C
	215/70R16	100	S	SL	221	708	8.7	6.5J	250	71	E	C
	215/65R16	102	H	XL	221	686	8.4	6.5J	290	71	E	C
	205/65R16	99/95	H	XL/SL	209	672	8.4	6.0J	290/250	71	E	C
	205/60R16	96/92	V	XL/SL	209	652	8.4	6.0J	290/250	71	E	C
	15	205/55R16	94	H	XL	214	632	8.4	6.5J	290	71	E
205/55R16		91	V	SL	214	632	8.4	6.5J	250	71	E	C
235/75R15		109/105	H/T	XL	235	733	8.7	6.5J	290	71	E	C
225/75R15		106	T	XL	223	719	8.7	6.0J	290	71	E	C
215/75R15		100	T	SL	216	703	8.7	6.0J	250	71	E	C

* New product will be launched in the fourth quarter.

CROSSLEADER
T01



VEHICLE MODEL
PICK-UP
ROAD CONDITION
Mud

CHARACTERISTICS

- Design of bionic tiger claw pattern is helpful to produce excellent mud performance.
- Shield-shaped sidewall design provides excellent scratch resistance.
- The design of high and low tread pattern makes it have excellent performance of removing mud and sand on tough road conditions with stronger driving force.
- The self-repairing technology ensures great puncture resistance.

Rim	Tire Size	Load Index	Speed Grade	Load Range	Section Width (mm)	Overall Diameter (mm)	Tread Depth (mm)	Std.Rim	Standard Pressure (Kpa)
26	*37×13.50R26LT	117	Q	8PR/D	345	928	15.5	11.0J	450
	*37×13.50R22LT	123	Q	10PR/E	345	928	15.5	11.0J	450
22	35×12.50R22LT	117	Q	10PR/E	318	877	15.5	10.0J	450
	*37×13.50R20LT	127	Q	10PR/E	318	928	15.5	10.0J	450
20	35×12.50R20LT	121	Q	10PR/E	318	877	15.5	10.0J	450
	33×12.50R20LT	114	Q	10PR/E	318	826	15.5	10.0J	450
	35×12.50R18LT	123	Q	10PR/E	318	877	15.5	10.0J	450
18	33×12.50R18LT	118	Q	10PR/E	318	826	15.5	10.0J	450
	235/60R18	103	N	SL	240	739	15.5	7.0J	250
	*37×13.50R17LT	121	Q	8PR/D	345	928	15.5	11.0J	350
17	35×12.50R17LT	121	Q	8PR/D	318	877	15.5	10.0J	350
	33×12.50R17LT	120	Q	10PR/E	318	826	15.5	10.0J	450
	265/70R17LT	118/115	N	8PR/D	272	804	15.5	8.0J	450
	265/65R17LT	120/117	N	10PR/E	272	776	15.5	8.0J	550
	245/70R17LT	114/110	N	8PR/D	248	776	15.5	7.0J	450
16	285/75R16LT	122/119	N	8PR/D	286	834	15.5	8.0J	450
	265/75R16LT	119/116	N	8PR/D	267	804	15.5	7.5J	450
	265/70R16LT	117/114	N	8PR/D	272	778	15.5	8.0J	450
	245/75R16LT	114/111	N	8PR/D	248	774	15.5	7.0J	450
	225/75R16LT	110/107	N	8PR/D	223	744	15.5	6.0J	450
15	35×12.5R15LT	113	N	6PR/C	318	877	15.5	10.0J	250
	33×12.5R15LT	108	N	6PR/C	318	826	15.5	10.0J	250
	31×10.5R15LT	109	N	6PR/C	268	775	15.5	8.5J	350
	30×9.5R15LT	104	N	6PR/C	240	750	15.5	7.5J	350
	235/75R15LT	110/107	N	8PR/D	235	733	15.5	6.5J	450
	215/75R15LT	106/103	N	8PR/D	216	703	15.5	6.0J	450

* New product will be launched in the fourth quarter.

CROSSLEADER
W01



VEHICLE MODEL
4*4
ROAD CONDITION
All-terrain

CHARACTERISTICS

- Bionic wolf claw pattern is designed to provide strong grip.
- Convex sidewall design provides excellent scratch resistance.
- Wider shoulder pattern design to guarantee the stability and safety of sharp turning and braking.
- The self-repairing technology ensures great puncture resistance.

Rim	Tire Size	Load Index	Speed Grade	Load Range	Section Width (mm)	Overall Diameter (mm)	Tread Depth (mm)	Std.Rim	Standard Pressure (Kpa)
18	235/60R18	103	T	SL	240	739	11.5	7.0J	250
	235/55R18	100	T	SL	245	715	11.5	7.5J	250
	235/50R18	97	T	SL	245	693	11.5	7.5J	250
	215/55R18	95	T	SL	226	693	11.5	7.0J	250
17	265/65R17LT	120/117	R	10PR/E	272	776	12.0	8.0J	550
	235/65R17	104	T	SL	240	738	11.5	7.0J	250
	225/65R17	102	T	SL	228	724	11.5	6.5J	250
	225/60R17	99	T	SL	228	702	11.5	6.5J	250
16	215/60R17	96	T	SL	221	690	11.5	6.5J	250
	265/70R16LT	110/107	R	6PR/C	272	778	12.0	8.0J	350
	255/70R16LT	108/104	R	6PR/C	260	764	12.0	7.5J	350
	245/75R16LT	114/111	R	8PR/D	248	774	11.5	7.0J	450
	245/70R16LT	113/110	R	8PR/D	248	750	11.5	7.0J	450
	225/75R16LT	103/100	R	6PR/C	223	744	11.5	6.0J	350
15	205/55R16	94	T	XL	214	632	9.0	6.5J	290
	31×10.5R15LT	109	R	6PR/C	268	775	12.0	8.5J	350
	235/75R15LT	110/107	R	8PR/D	235	733	11.5	6.5J	450
	215/75R15LT	100/97	R	6PR/C	216	703	11.5	6.0J	350
	195/65R15	95	T	XL	201	635	9.0	6.0J	290
14	195/60R15	92	T	XL	201	615	9.0	6.0J	290
	215/75R14LT	98/95	R	6PR/C	216	678	11.5	6.0J	350

CROSSLIDER
DH01



VEHICLE MODEL
CAR
ROAD CONDITION
Urban Pavement

CHARACTERISTICS

- Streamline small groove design, low noise, quiet and comfortable.
- Narrow distance between patterns is designed to deliver even wear and extend tire life.
- Combination of center rib and kerf helps change the tread rigidity and improve ride comfort.
- Both of tread and sidewall with appropriate hardness and softness have passed strict test, which can effectively avoid the vibration and noise of tire.

Rim	Tire Size	Load Index	Speed Grade	Load Range	Section Width (mm)	Overall Diameter (mm)	Tread Depth (mm)	Std. Rim	Standard Pressure (Kpa)			
17	215/45R17	91	W	XL	213	626	8.0	7.0J	290	72	E	C
	215/50R17	95	W	XL	226	648	8.0	7.0J	290	72	E	C
	215/55R17	98	W/V	XL	226	668	8.0	7.0J	290	72	E	C
16	225/55R16	99	V	XL	233	654	8.0	7.0J	290	72	E	C
	225/60R16	98	H	SL	228	676	8.0	6.5J	250	71	E	C
	215/60R16	95	V	SL	221	664	8.0	6.5J	250	71	E	C
	215/55R16	97	V	XL	226	642	8.0	7.0J	290	72	E	C
	215/70R16	100	H	SL	221	708	8.0	6.5J	250	71	E	C
	215/65R16	102/98	H	XL/SL	221	686	8.0	6.5J	290/250	71	E	C
	205/55R16	91	V	SL	214	632	8.0	6.5J	250	72	E	C
	205/60R16	96	V	XL	209	652	8.0	6.0J	290	72	E	C
15	215/65R15	96	V	SL	221	661	8.0	6.5J	250	71	E	C
	205/60R15	91	H	SL	209	627	8.0	6.0J	250	71	E	C
	205/65R15	94	H	SL	209	647	8.0	6.0J	250	71	E	C
	195/55R15	85	V	SL	201	595	8.0	6.0J	250	72	E	C
	195/65R15	91	H	SL	201	635	8.0	6.0J	250	71	E	C
	195/60R15	88	H	SL	201	615	8.0	6.0J	250	71	E	C
	195/50R15	82	V	SL	201	577	8.0	6.0J	250	72	E	C
	185/65R15	88	H	SL	189	621	8.0	5.5J	250	70	E	C
	185/60R15	84	H	SL	189	603	8.0	5.5J	250	70	E	C
	14	185/60R14	82	H	SL	189	578	7.5	5.5J	250	70	E
185/65R14		86	H	SL	189	596	7.5	5.5J	250	70	E	C
175/70R14		84	T	SL	177	602	7.5	5.0J	250	70	E	C

DH02



VEHICLE MODEL
CAR
ROAD CONDITION
Urban Pavement

CHARACTERISTICS

- Tiny blocks with high density are designed to reduce noise due to tire vibration and help provide more comfortable and quiet ride experience.
- Combination of center rib and kerf helps change the tread rigidity and improve ride comfort.
- Lightweight profile design and application of new reinforced materials can decrease tire weight by 8%, which also help save fuel and protect environment.
- The tread is engineered with low rolling resistance formula, which also helps reduce fuel consumption and provide safe ride.
- Either of common sidewall and scratch-resistant sidewall could be selected to meet the varied requirements by different customers.

Rim	Tire Size	Load Index	Speed Grade	Load Range	Section Width (mm)	Overall Diameter (mm)	Tread Depth (mm)	Std. Rim	Standard Pressure (Kpa)			
18	225/40ZR18	92	W	XL	230	637	7.7	8.0J	290	71	C	C
17	225/45ZR17	94	W	XL	225	634	7.7	7.5J	290	71	C	C
16	215/60R16	95	V	SL	221	664	7.7	6.5J	250	70	C	C
	205/55R16	94	V	XL	214	632	7.5	6.5J	290	70	C	C
15	205/65R15	94	H/V	SL	209	647	7.7	6.0J	250	70	C	C
	195/65R15	91	H/V	SL	201	635	7.7	6.0J	250	70	C	C
	195/60R15	88	H	SL	201	615	7.7	6.0J	250	70	C	C
	185/65R15	88	H	SL	189	621	7.7	5.5J	250	70	C	C
14	205/70R14	98	T	XL	209	644	7.7	6.0J	290	70	C	C
	195/70R14	91	T	SL	201	630	7.7	6.0J	250	70	C	C
	185/70R14	88	H/T	SL	189	616	7.7	5.5J	250	70	C	C
	185/65R14	86	T	SL	189	596	7.7	5.5J	250	70	C	C
	185/60R14	82	T	SL	189	578	7.7	5.5J	250	70	C	C
	175/65R14	82	T	SL	177	584	7.7	5.0J	250	70	C	C



DH05



CHARACTERISTICS

- Knife-shaped groove pattern cuts off the water film and air flow; anti-wet and low noise.
- Optimized carcass outline design for driving quiet comfort.
- Formula with silicon ensures environment friendly requirement and avoids hydroplaning.
- The rolling resistance is 8% lower than common tires, saving about \$15 per year.

VEHICLE MODEL
CAR
ROAD CONDITION
Urban Pavement

Rim	Tire Size	Load Index	Speed Grade	Load Range	Section Width (mm)	Overall Diameter (mm)	Tread Depth (mm)	Std.Rim	Standard Pressure (Kpa)			
16	215/60R16	99	H	XL	221	664	7.5	6.5J	290	71	C	C
	205/55R16	91	V/H	SL	214	632	7.5	6.5J	250	71	C	C
	205/60R16	92	V	SL	209	652	7.5	6.0J	250	71	C	C
15	205/70R15	96	T	SL	209	669	7.5	6.0J	250	71	C	C
	205/60R15	95	H	XL	209	627	7.5	6.0J	290	70	C	C
	205/65R15	94	H	SL	209	647	7.5	6.0J	250	70	C	C
	195/55R15	85	H	SL	201	595	7.5	6.0J	250	71	C	C
	195/65R15	91	H/V	SL	201	635	7.5	6.0J	250	71	C	C
	195/60R15	88	H	SL	201	615	7.5	6.0J	250	71	C	C
	195/50R15	86/82	H/T	XL/SL	201	577	7.5	6.0J	290/250	71	C	C
	185/60R15	88/84	H	XL/SL	189	603	7.5	5.5J	290/250	71	C	C
	185/65R15	88	H	SL	189	621	7.5	5.5J	250	71	C	C
	185/55R15	82	H	SL	194	585	7.5	6.0J	250	71	C	C
	175/65R15	88	H	XL	177	609	7.5	5.0J	290	71	C	C
14	205/70R14	95	T	SL	209	644	7.5	6.0J	250	71	C	C
	195/60R14	86	H	SL	201	590	7.5	6.0J	250	71	C	C
	185/60R14	82	H	SL	189	578	7.5	5.5J	250	70	C	C
	185/65R14	86	H	SL	189	596	8	5.5J	250	70	C	C
	185/70R14	88	T	SL	189	616	7.5	5.5J	250	70	C	C
	175/65R14	82	H	SL	177	584	7.5	5.0J	250	70	C	C
	175/70R14	84	T	SL	177	602	7.5	5.0J	250	70	C	C
	165/60R14	79	T	XL	170	554	7.2	5.0J	290	70	C	C
	165/65R14	83/79	T	XL/SL	170	570	7.8	5.0J	290/250	70	C	C
	165/70R14	81	T	SL	170	588	7.2	5.0J	250	70	C	C
155/65R14	79/75	T	XL/SL	157	558	7.2	4.5J	290/250	70	C	C	
13	185/70R13	86	T	SL	189	590	7.5	5.5B	250	70	C	C
	175/70R13	82	T	SL	177	576	7.5	5.0B	250	70	C	C
	175/60R13	77	H	SL	177	540	7.5	5.0B	250	70	C	C
	165/70R13	79	T	SL	170	562	7.5	5.0B	250	70	C	C
	165/65R13	77	T	SL	170	544	7.2	4.5B	250	70	C	C
	155/70R13	75	T	SL	157	548	7.2	4.5B	250	70	C	C
	155/65R13	73	T	SL	157	532	7.2	4.5B	250	70	C	C



DS805



CHARACTERISTICS

- Stronger carcass construction helps effectively improve endurance and loading performance.
- At the time to enhance tire traction, confident to provide excellent drainage and improve wet-skid resistance.
- Wider central pattern block provides strong driving performance.

VEHICLE MODEL
LIGHT TRUCK
ROAD CONDITION
Pavement / Unpaved Road

Rim	Tire Size	Load Index	Speed Grade	Load Range	Section Width (mm)	Overall Diameter (mm)	Tread Depth (mm)	Std.Rim	Standard Pressure (Kpa)
16	7.50R16LT (TT)	120/116	N	12PR/F	215	805	10.0	6.0G	670
	7.50R16LT (TL)	120/116	N	12PR/F	215	805	10.0	6.0J	670
	7.00R16LT (TT)	115/110	N	12PR/F	200	775	10.0	5.5F	670
	7.00R16LT (TL)	115/110	N	12PR/F	200	775	10.0	5.5J	670
	6.50R16LT (TT)	107/102	N/M	10PR/E	185	750	10.0	5.5F	560
	6.50R16LT (TL)	107/102	N/M	10PR/E	185	750	10.0	5.5J	560
	6.50R16LT (TT)	110/105	M	12PR/F	185	750	10.0	5.5F	670
	6.50R16LT (TL)	110/105	M	12PR/F	185	750	10.0	5.5F	670
	205/85R16LT/C	117/115	L	12PR/F	215	805	10.0	6.0J	670
	195/85R16LT/C	114/112	L	12PR/F	185	750	10.0	5.5J	670
	185/75R16LT/C	104/102	R	8PR/D	184	684	10.0	5.0J	475
	185/75R16LT/C	100/97	R	8PR/D	184	684	10.0	5.0J	450
	15	195/85R15LT/C	113/112	L	8PR/D	196	693	10.0	5.5J
195R15LT/C		107/105	Q/R	8PR/D	196	693	9.0	5.5J	450
195R15LT/C		101/99	Q/R	6PR/C	196	693	9.0	5.5J	350
185R15LT/C		103/102	Q/R	8PR/D	189	677	9.5	5.5J	450
185R15LT/C		98/97	Q/R	6PR/C	189	677	9.5	5.5J	350
14	205R14LT/C	109/107	N	8PR/D	208	684	9.5	6.0J	450
	205R14LT/C	105/103	N	6PR/C	208	684	9.5	6.0J	375
	195R14LT/C	105/103	N	8PR/D	196	668	9.0	5.5J	450
	195R14LT/C	100/99	N	6PR/C	196	668	9.0	5.5J	350
	185R14LT/C	97/95	S	6PR/C	188	650	9.5	5.5J	350
	185R14LT/C	102/100	R	8PR/D	188	650	9.5	5.5J	450
	165R14LT/C	96/95	R/S	8PR/D	167	622	7.5	4.5J	450
	165R14LT/C	91/90	R/S	6PR/C	167	622	7.5	4.5J	350
13	175R13LT/C	97/95	R	8PR/D	177	610	8.0	5.0B	450
	165R13LT/C	94/92	S	8PR/D	167	596	7.5	4.5B	450
	165/70R13LT/C	88/86	S	6PR/C	170	562	7.0	5.0B	375
	165/70R13LT/C	94/92	S	8PR/D	170	562	7.0	5.0B	450
	155R13LT/C	90/88	N/S	8PR/D	157	578	7.0	4.5B	450
	155R13LT/C	85/83	N/S	6PR/C	157	578	7.0	4.5B	350
12	155R12LT/C	88/86	N	8PR/D	157	550	7.0	4.5B	450
	155R12LT/C	83/81	P/N	6PR/C	157	550	7.0	4.5B	350



DL01



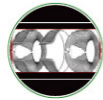
CHARACTERISTICS



Design for new generation MPV, light truck tire including full 31 specifications ranging from 13 to 16 inch.



Wider tread design provides wider contacting surface to optimize driving stability and improve anti-wear performance.



High-strengthened carcass construction design; the modified PET (PET) two-layer anti-package structure, the service life is improved 20% higher than other light truck tires.



Three longitudinal grooves are designed to ensure excellent steering and driving performance.

VEHICLE MODEL
MPV / LIGHT TRUCK
ROAD CONDITION
Pavement / Unpaved Road

Rim	Tire Size	Load Index	Speed Grade	Load Range	Section Width (mm)	Overall Diameter (mm)	Tread Depth (mm)	Std.Rim	Standard Pressure (Kpa)
16	* 265/70R16LT/C	117/114	Q	8	272	778	10.0	8.0J	450
	* 245/75R16LT/C	114/111	Q	8	248	774	10.0	7.0J	450
	* 245/70R16LT/C	113/110	R	8	248	750	10.0	7.0J	450
	* 235/85R16LT/C	120/116	R	10	235	806	10.0	6.5J	550
	* 225/75R16LT/C	121/120	R	12	223	744	9.5	6.0J	650
	* 215/75R16LT/C	113/111	R	10	216	728	9.0	6.0J	550
	* 205/75R16LT/C	110/108	R	8	203	714	9.0	5.5J	550
	* 205/65R16LT/C	101/98	T	8	209	672	9.0	6.0J	450
	* 195/75R16LT/C	107/105	R	10	196	698	9.0	5.5J	550
	* 195/65R16LT/C	104/102	T	10	201	660	9.0	6.0J	550
* 185/75R16LT/C	104/102	R	8	184	684	8.5	5.0J	450	
15	* 235/75R15LT/C	116/113	S	10	235	733	10.0	6.5J	550
	* 225/75R15LT/C	108/104	S	8	223	719	9.5	6.0J	450
	* 215/70R15LT/C	104/101	R	8	221	683	9.0	6.5J	450
	* 205/70R15LT/C	106/104	R	10	209	669	9.0	6.0J	550
	* 195/70R15LT/C	104/102	R	10	201	655	9.0	6.0J	550
	* 195R15LT/C	107/105	Q	8	196	693	9.0	5.5J	450
	* 185R15LT/C	103/102	R	8	189	677	9.0	5.5J	450
14	* 205R14LT/C	109/107	N	8	208	684	9.0	6.0J	450
	195R14LT/C	105/103	N	8	196	668	9.0	5.5J	450
	* 185R14LT/C	102/100	R	8	189	652	9.0	5.5J	450
	* 175/65R14LT/C	90/88	T	8	177	584	8.0	5.0J	450
	* 165R14LT/C	96/95	R	8	165	620	7.5	4.5J	450
	* 165/70R14LT/C	89/87	S	8	170	588	7.0	5.0J	450
13	* 175R13LT/C	97/95	R	8	177	610	8.0	5.0B	450
	* 165R13LT/C	94/92	S	8	165	594	7.5	4.5B	450
	* 165/70R13LT/C	88/85	S	8	170	562	7.0	5.0B	450
	* 155R13LT/C	90/88	S	8	157	578	7.0	4.5B	450
12	* 155R12LT/C	88/86	N	8	157	553	7.0	4.5B	450

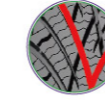
* New product will be launched in the fourth quarter.



DLA01



CHARACTERISTICS



Design of single guide pattern groove provide excellent high speed handling performance in straight line.



Design of thin sipes pattern on shoulder provide quiet and comfortable ride experience.



The capillary groove structure provides better performance of braking and handling to ensure the safety of the four seasons.



Multi-chip mold without porosity design for nice appearance.

VEHICLE MODEL
CAR
ROAD CONDITION
All-terrain

Rim	Tire Size	Load Index	Speed Grade	Load Range	Section Width (mm)	Overall Diameter (mm)	Tread Depth (mm)	Std.Rim	Standard Pressure (Kpa)
19	* 235/45R19	99	V	XL	236	695	8.0	8.0J	290
18	* 255/55R18	109	V	XL	265	737	8.0	8.0J	290
	* 235/60R18	107	V	XL	240	739	8.0	7.0J	290
17	* 235/65R17	108	V	XL	240	738	8.0	7.0J	290
	* 225/65R17	102	H	SL	228	724	8.0	6.5J	250
	* 225/60R17	99	V	SL	228	702	8.0	6.5J	250
	* 225/50R17	98	V	XL	233	658	8.0	7.0J	290
	225/45R17	94	W	XL	225	634	8.0	7.5J	290
	* 215/60R17	96	H	SL	221	690	8.0	6.5J	250
	* 205/50R17	93	V	SL	214	638	8.0	6.5J	250
16	* 225/55R16	95	H	SL	233	654	8.0	7.0J	250
	* 215/65R16	98	H	SL	221	686	8.0	6.5J	250
	* 215/60R16	95	H	SL	221	664	8.0	6.5J	250
	* 215/55R16	97	V	XL	226	642	8.0	7.0J	290
	* 205/60R16	96	H	XL	209	652	8.0	6.0J	290
	* 205/55R16	94	V	XL	214	632	8.0	6.5J	290
* 195/55R16	91	H	XL	201	620	8.0	6.0J	290	
15	* 205/65R15	94	H	SL	209	647	8.0	6.0J	250
	* 205/60R15	91	H	SL	209	627	8.0	6.0J	250
	* 195/65R15	91	V	SL	201	635	8.0	6.0J	250
	* 195/60R15	88	H	SL	201	615	8.0	6.0J	250
	* 195/55R15	85	H	SL	201	595	8.0	6.0J	250
	* 195/50R15	82	H	SL	201	577	8.0	6.0J	250
	* 185/65R15	88	H	SL	189	621	8.0	5.5J	250
	* 185/60R15	88	H	XL	189	603	8.0	5.5J	290
	* 185/55R15	82	H	SL	194	585	8.0	6.0J	250
	* 175/65R15	84	T	SL	177	609	8.0	5.0J	250
14	* 195/60R14	86	T	SL	201	590	8.0	6.0J	250
	* 185/70R14	88	T	SL	189	616	8.0	5.5J	250
	* 185/65R14	86	T	SL	189	596	8.0	5.5J	250
	* 185/60R14	82	T	SL	189	578	8.0	5.5J	250
	* 175/80R14	88	T	SL	177	636	8.0	5.0J	250
	* 175/70R14	84	T	SL	177	602	8.0	5.0J	250
	* 175/65R14	82	T	SL	177	584	8.0	5.0J	250
	* 165/70R14	81	T	SL	170	588	8.0	5.0J	250
	* 165/65R14	79	T	SL	170	570	8.0	5.0J	250
	* 165/60R14	75	H	SL	170	554	8.0	5.0J	250
	* 155/65R14	75	T	SL	157	558	8.0	4.5J	250

* New product will be launched in the fourth quarter.



DW01



CHARACTERISTICS

- The bionic design of wall lizard feet improves the adhesion of the ice and snow surface, with superior driving performance.
- The unique "V" pattern design of central rib improves the stability of straight driving on the snow and ice road, ensuring the safety of driving.
- Ultra-low temperature compound keeps tire soft even at 70°C below zero, improving the grip on ice road
- The tread with nails shortens the ice brake distance by 5%, and the snowfield brake distance by 2%.

VEHICLE MODEL
CAR
ROAD CONDITION
Snow

Rim	Tire Size	Load Index	Speed Grade	Load Range	Section Width (mm)	Overall Diameter (mm)	Tread Depth (mm)	Std.Rim	Standard Pressure (Kpa)			
17	* 225/65R17	102	T	SL	228	724	10.0	6.5J	250	/	/	/
	* 225/60R17	99	T	SL	228	702	10.0	6.5J	250	/	/	/
	* 225/55R17	97	T	SL	233	680	10.0	7.0J	250	/	/	/
	* 225/50R17	98	T	XL	233	658	10.0	7.0J	290	/	/	/
	215/55R17	94	T	SL	226	668	10.0	7.0J	250	71	E	C
	* 215/50R17	95	T	XL	226	648	10.0	7.0J	290	/	/	/
16	215/65R16	98	T	SL	221	686	10.0	6.5J	250	71	E	C
	* 215/60R16	95	T	SL	221	664	10.0	6.5J	250	/	/	/
	* 205/60R16	92	T	SL	209	652	10.0	6.0J	250	/	/	/
	205/55R16	91	T	SL	214	632	10.0	6.5J	250	71	E	C
15	* 205/70R15	96	T	SL	209	669	10.0	6.0J	250	/	/	/
	* 205/65R15	94	T	SL	209	647	10.0	6.0J	250	/	/	/
	195/65R15	91	T	SL	201	635	10.0	6.0J	250	71	E	C
	* 195/60R15	88	T	SL	201	615	10.0	6.0J	250	/	/	/
	* 195/55R15	85	T	SL	201	595	10.0	6.0J	250	/	/	/
	185/65R15	88	T	SL	189	621	10.0	5.5J	250	70	E	C
	* 185/60R15	84	T	SL	189	603	10.0	5.5J	250	/	/	/
14	* 185/70R14	88	T	SL	189	616	10.0	5.5J	250	/	/	/
	* 185/65R14	86	T	SL	189	596	10.0	5.5J	250	/	/	/
	185/60R14	82	T	SL	189	578	10.0	5.5J	250	70	E	C
13	* 175/65R14	82	T	SL	177	584	10.0	5.0J	250	/	/	/
	* 175/70R13	79	T	SL	177	576	10.0	5.0J	250	/	/	/

* New product will be launched in the fourth quarter.



DW02



CHARACTERISTICS

- The non-symmetrical pattern improves the stability when cornering. The specific pattern design of both sides helps remove ice and snow.
- 3D kerf is designed to help break the water film and improve the grip.
- Application of ultra low temperature formula helps ensure the softness of tire and driving safety under -70°C condition.
- Design of shield-shaped sidewall features scratch resistance on ice and enhanced grip in snow.

VEHICLE MODEL
HP/SUV
ROAD CONDITION
Snow

Rim	Tire Size	Load Index	Speed Grade	Load Range	Section Width (mm)	Overall Diameter (mm)	Tread Depth (mm)	Std.Rim	Standard Pressure (Kpa)
21	* 275/45R21	110	T	XL	273	781	8.5	9.0J	290
	* 265/45R21	108	T	XL	266	771	8.5	9.0J	290
20	* 275/50R20	113	T	XL	284	784	8.5	8.5J	290
	275/45R20	110	T	XL	273	756	8.5	9.0J	290
	* 275/35R20	102	T	XL	278	700	8.5	9.5J	290
	255/55R20	110	T	XL	265	788	8.5	8.0J	290
	* 255/45R20	105	T	XL	255	738	9.0	8.5J	290
	* 245/50R20	102	T	SL	253	754	9.0	7.5J	250
	* 245/45R20	103	T	XL	243	728	8.5	8.0J	290
	* 245/40R20	99	T	XL	248	704	8.5	8.5J	290
19	* 275/40R19	105	T	XL	278	703	8.5	9.5J	290
	* 265/50R19	110	T	XL	277	749	8.5	8.5J	290
	255/55R19	111	T	XL	265	763	9.0	8.0J	290
	255/50R19	107	T	XL	265	739	9.0	8.0J	290
	* 255/45R19	104	T	XL	255	713	8.5	8.5J	290
	245/55R19	103	T	SL	253	753	9.0	7.5J	250
	* 245/45R19	102	T	XL	243	703	8.5	8.0J	290
	235/55R19	101	S	SL	245	741	9.0	7.5J	250
	235/35R19	91	T	XL	241	647	8.5	8.5J	290
	225/55R19	99	T	SL	233	731	9.0	7.0J	250
18	255/55R18	105	S	SL	265	737	9.0	8.0J	250
	245/60R18	105	S	SL	248	751	9.0	7.0J	250
	* 245/50R18	104	T	XL	253	703	8.5	7.5J	290
	245/45R18	96	T	SL	243	677	9.0	8.0J	250
	235/60R18	103	T	SL	240	739	10.0	7.0J	250
	235/55R18	100	S	SL	245	715	9.0	7.5J	250
	235/50R18	97	S	SL	245	693	9.0	7.5J	250
	235/45R18	94	T	SL	236	669	8.5	8.0J	250
	* 235/40R18	95	T	XL	241	645	8.5	8.5J	290
	225/60R18	100	S	SL	228	727	9.0	6.5J	250
	225/55R18	98	S	SL	233	705	10.0	7.0J	250
	225/45R18	91	S	SL	225	659	9.0	7.5J	250
17	215/55R18	95	S	SL	226	693	9.0	7.0J	250
	265/65R17	112	S	SL	272	776	9.0	8.0J	250
	245/65R17	111	T	XL	248	750	9.0	7.0J	290
	* 245/45R17	99	T	XL	243	652	8.5	8.0J	290
	235/65R17	104	T	SL	240	738	10.0	7.0J	250
	235/60R17	102	S	SL	240	714	9.0	7.0J	250
	235/55R17	99	S	SL	245	690	9.0	7.5J	250
	235/45R17	94	T	SL	236	644	8.5	8.0J	250

* New product will be launched in the fourth quarter.

DW02



Rim	Tire Size	Load Index	Speed Grade	Load Range	Section Width (mm)	Overall Diameter (mm)	Tread Depth (mm)	Std.Rim	Standard Pressure (Kpa)
17	225/65R17	102	T	SL	228	724	10.0	6.5J	250
	225/60R17	99	T	SL	228	702	10.0	6.5J	250
	225/55R17	97	T	SL	233	680	8.5	7.0J	250
	225/50R17	94	T	SL	233	658	8.5	7.0J	250
	225/45R17	90	T	XL	225	634	9.0	7.5J	290
	215/60R17	96	T	SL	221	690	10.0	6.5J	250
	215/55R17	94	S	SL	226	668	9.0	7.0J	250
215/50R17	91	T	SL	226	648	9.0	7.0J	250	
16	265/70R16	112	T	SL	272	778	9.0	8.0J	250
	245/75R16	111	S	SL	248	774	9.0	7.0J	250
	245/70R16	107	S	SL	248	750	9.0	7.0J	250
	235/70R16	106	T	SL	240	736	10.0	7.0J	250
	225/55R16	95	T	SL	233	654	8.5	7.0J	250
	215/70R16	100	T	SL	221	708	9.0	6.5J	250
	215/65R16	98	T	SL	221	686	10.0	6.5J	250
	215/60R16	95	S	SL	221	664	9.0	6.5J	250
	215/55R16	93	T	SL	226	642	9.0	7.0J	250
	205/60R16	92	S	SL	209	652	9.0	6.0J	250
	205/55R16	91	T	SL	214	632	8.0	6.5J	250
	195/60R16	89	S	SL	201	640	9.0	6.0J	250
195/55R16	87	S	SL	201	620	9.0	6.0J	250	
15	235/75R15	105	T	SL	235	733	10.0	6.5J	250
	225/75R15	102	T	SL	223	719	10.0	6.0J	250
	215/75R15	100	S	SL	216	703	9.0	6.0J	250
	215/70R15	98	S	SL	221	683	9.0	6.5J	250
	205/65R15	94	T	SL	209	647	9.0	6.0J	250
	195/65R15	91	T	SL	201	635	9.0	6.0J	250
	195/60R15	88	T	SL	201	615	9.0	6.0J	250
	195/55R15	85	T	SL	201	595	8.5	6.0J	250
14	185/65R14	88	T	SL	189	616	8.0	5.5J	250
	185/60R14	90	T	XL	189	596	8.0	5.5J	290
	185/60R14	82	T	SL	189	578	8.0	5.5J	250
	175/70R14	84	T	SL	177	602	8.0	5.0J	250
13	175/65R14	82	T	SL	177	584	8.0	5.0J	250
	165/70R13	79	T	SL	170	562	8.0	5.0B	250

* New product will be launched in the fourth quarter.

DW05



VEHICLE MODEL
CAR
ROAD CONDITION
Snow

CHARACTERISTICS

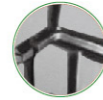
- Snow shovel on shoulder is designed to enhance ice-breaking capability and ensure the maximum traction in icy and snowy condition.
- Water suction bag is designed to store and evacuate the water rapidly so as to enhance the ice and snow performance.
- Design of 3D kerf and tiny grooves helps break the water film on ice and ensure the driving safety in icy condition.
- The zigzag design of tire edge can effectively remove the ice water film and improve the stability.

Rim	Tire Size	Load Index	Speed Grade	Load Range	Section Width (mm)	Overall Diameter (mm)	Tread Depth (mm)	Std.Rim	Standard Pressure (Kpa)
19	235/55R19	101	T	SL	245	741	9.0	7.5J	250
18	235/50R18	97	T	SL	245	693	9.0	7.5J	250
	235/55R18	100	T	SL	245	715	9.0	7.5J	250
17	245/55R17	102	T	SL	253	702	8.0	7.5J	250
	225/65R17	102	T	SL	228	724	10.0	6.5J	250
16	215/75R16C(LT)	107/104	R	8PR/D	216	728	8.0	6.0J	450
	205/65R16C(LT)	107/105	T	8PR/D	209	672	8.0	6.0J	475
	205/55R16	91	H/T	SL	214	632	8.0	6.5J	250
	195/60R16	89	T	SL	201	640	9.0	6.0J	250
15	215/70R15C(LT)	104/101	R	8PR/D	221	683	8.0	6.5J	350
	195/70R15C(LT)	104/101	R	10PR/E	201	655	8.0	6.0J	550
	195R15C(LT)	106/104	R	8PR/D	196	693	8.0	5.5J	450
	195/65R15	95	T	XL	201	635	8.0	6.0J	290
	185/65R15	88	H	SL	189	621	8.0	5.5J	250
14	195/60R14	86	T	SL	201	590	8.0	6.0J	250
	185R14C(LT)	102/100	R	8PR/D	189	652	8.0	5.5J	450
	175/70R14	84	T	SL	177	602	8.0	5.0J	250



DS315

CHARACTERISTICS



Tread pattern helps enhance tire grip on unpaved road, the big off-road pattern can perform strong grip in muddy condition.



Open type grooves deliver excellent performance including outstanding self-cleaning, impressive driving, strong traction, improved trafficability and braking.

VEHICLE MODEL

MILITARY

ROAD CONDITION

Pavement / Unpaved Road

Tire Size	Tread Depth		Std.Rim	Section Width mm	Overall Diameter mm	Load Capacity(kg)		Std.Cold Infl.Press.(kPa)	
	mm	1/32in				Road	Cross road	Road	Cross road
11R18	22.0	27.7	9.0-18	290	1000	1800	1600	450	350

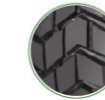


DS706

CHARACTERISTICS



Excellent comprehensive performance, optimized balance for high wear resistance, safety and economy.



Perfect performance combination for accurate steering, excellent braking and great handling.

VEHICLE MODEL

MILITARY

ROAD CONDITION

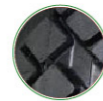
Pavement / Unpaved Road

Tire Size	Tread Depth		Std.Rim	Section Width mm	Overall Diameter mm	Load Capacity(kg)		Std.Cold Infl.Press.(kPa)	
	mm	1/32in				Road	Cross road	Road	Cross road
12.5R20(TT)	22.0	27.7	9.0-20	365	1120	2200	2000	450	350
12.5R20(TL)	22.0	27.7	9.0-20	365	1120	2200	2000	450	350



DS703

CHARACTERISTICS



V Shaped off-road pattern designed for special off-road vehicle helps provide excellent grip in soft and wet road condition.



Perfect trafficability, traction and braking.

VEHICLE MODEL

MILITARY

ROAD CONDITION

Pavement / Unpaved Road

Tire Size	Tread Depth		Std.Rim	Section Width mm	Overall Diameter mm	Load Capacity(kg)		Std.Cold Infl.Press.(kPa)	
	mm	1/32in				Road	Cross road	Road	Cross road
12R20(TT)	22.0	27.7	9.0-20	345	1120	2000	1800	450	350
12R20(TL)	22.0	27.7	9.0-20	345	1120	2000	1800	450	350



DS766

CHARACTERISTICS



Suitable for military vehicles, to help the vehicle run at high speed in good road condition and ensure high trafficability in severe road condition.



The longitudinal grooves are taken as main running surface and make the transversal grooves more narrow, which help improve the high speed performance.

VEHICLE MODEL

MILITARY

ROAD CONDITION

Pavement / Unpaved Road

Tire Size	Tread Depth		Std.Rim	Section Width mm	Overall Diameter mm	Load Capacity(kg)		Std.Cold Infl.Press.(kPa)	
	mm	1/32in				Road	Cross road	Road	Cross road
37×12.5R16.5	14.5	18.3	8.25	315	927.6	\	1750	\	350

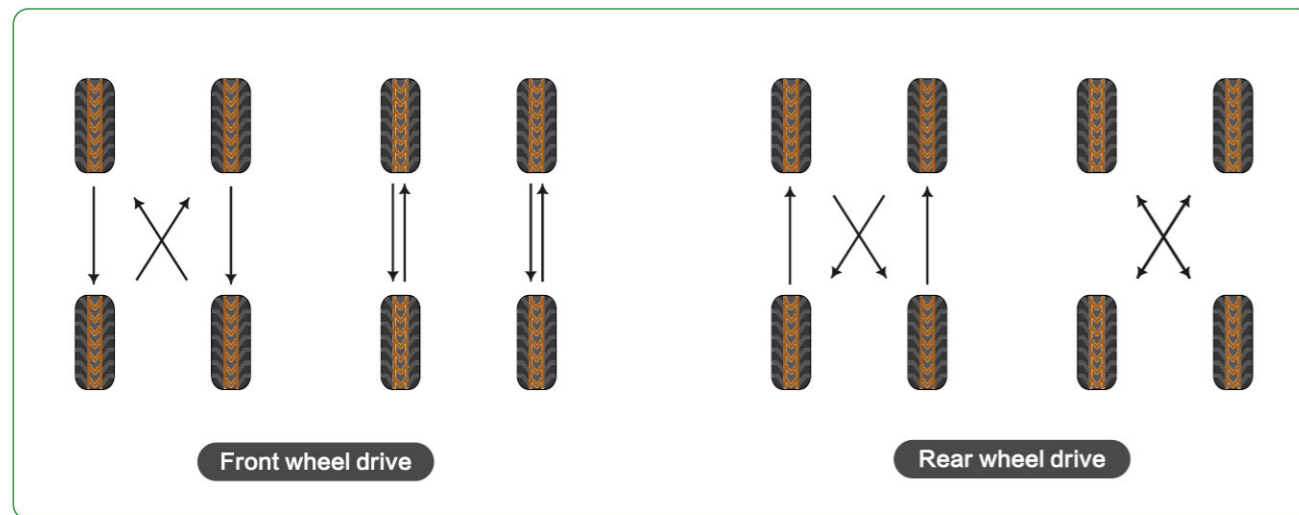
TIRE MANAGEMENT

TIPS

When detecting the abnormal wear of tire, the tire must be replaced immediately, every 10000 km tire transposition.
Special attention should be paid to the snow tire.

THE ADVANTAGES OF TIRE TRANSPOSITION

1. Prevent abnormal wear and life extension of the tire.
2. Detect tire damage caused by vehicles in use.
3. Improve the ride comfort and safety.

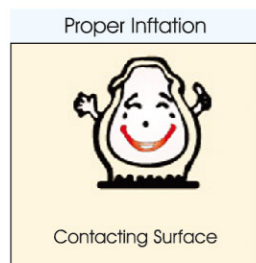


INFLATION PRESSURE

The best inflation pressure is one of the most important aspects of the protection of the tire.

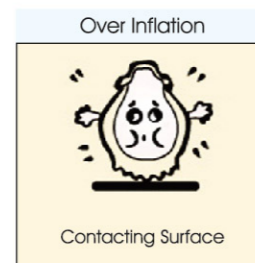
The internal pressure due to tire tread uniform ground contact, and prevent abnormal wear.

Rolling resistance by reducing, and quickly spread the heat generated, so that the internal heat levels are maintained at a stable level.



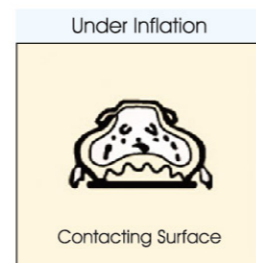
THE CORRECT PRESSURE

The appropriate pressure, can ensure the tire in the running process of the best ground, prolong the service life of the tire.



THE PRESSURE IS TOO LARGE

The tire more easily influenced by external factors in the process of moving (pits, and other debris). Speed the wear of the tread center part.



INSUFFICIENT AIR PRESSURE

Fever injury caused by the lateral excessive bending of the sidewall, and cause the abnormal wear of the tire shoulder. Rolling resistance increased, reduced the fuel economy of the vehicle.