

ALL WIN®



TOP TRUST®



TOP TRUST®



青岛旺裕橡胶制品有限公司
QINGDAO WANGYU RUBBER CO.,LTD

工厂地址：山东省青岛市平度明村工业园
Factory: Mingcun Rubber Zone, Pingdu City, Qingdao, China
电话 (TEL): 0086-532-86316818 86312068
传真 (FAX): 0086-532-86316688

出口部 (一) 地址：中国青岛漳州二路123号香港花园大公馆，林苑1103室
Export Dept ONE: Room 1103 Linyuan, Hongkong Garden, No.123, Zhangzhou
Second Road, Qingdao, China

电话 (TEL): 0086-532-85938508 85899575
传真 (FAX): 0086-532-85938328

出口部 (二) 地址：青岛市西海岸新区庐山路6号瑞源名嘉国际12楼
Export Dept TWO: 12th Floor, Ruiyuan Mingjia International Building, No.6 Lushan Road,
West Coast New Area, Qingdao, China

电话 (TEL): 0532-80985288 0532-80985178
传真 (FAX): 0532-80985178

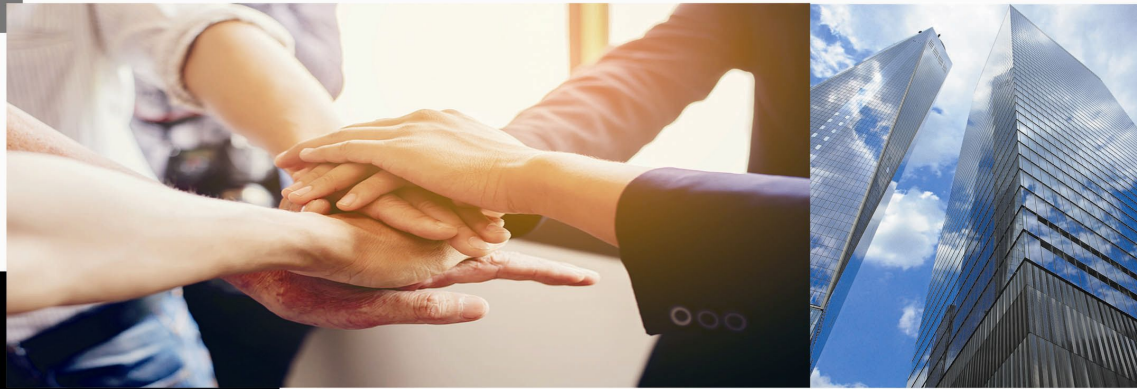
E-mail: sales21@wangyutyre.com
Web: http://www.wangyutyre.com



2019

青岛旺裕橡胶制品有限公司

QINGDAO WANGYU RUBBER CO.,LTD



企业文化
CULTURE IDEA

愿景 (Our Vision):
百年旺裕，持续发展。
Sustainable development for a century brand of WANGYU!

使命 (Mission)
为客户创造价值，推动企业持续兴旺。
Create value for customers, and bring enterprise's development and prosperity.
为员工谋取利益，助推人类平安富裕。
Seek benefits for staff, and boost mankind's peace and affluence.

核心价值观 (Core Values)
凭良心做事，靠诚信发展。
Doing with conscience; Development by integrity
做精品轮胎，创双合品牌。
Produce classic tyres; Create TOP TRUST brand.

ABOUT US

青岛旺裕橡胶制品有限公司成立于1996年，坐落于2018年“上合峰会”的举办地中国山东省青岛市——中国第三大集装箱运输港口。

公司占地150多亩，拥有员工500多名，年产120万套轮胎、内胎、垫带等。拥有先进的胶料密炼中心，全自动化的胶囊反包成型机，智能化的硫化设备，从而保证了轮胎的高端性。我们的产品系列主要有：工程机械轮胎、工业车辆轮胎、农业轮胎、载重汽车轮胎、轻型载重汽车轮胎、实心轮胎、沙漠轮胎、ATV/UTV轮胎、内胎垫带等300多个规格，月出货量200多个超高柜。公司先后通过了ISO9001: 2015、DOT、SGS等认证，并被政府部门评定为“高新技术企业”、“诚信企业”，获“精准扶贫先进单位”等荣誉称号。

20多年来，公司一直秉承“质量第一、客户至上”的理念，以诚信经营企业，以精益求精的作风为客户做好每一条轮胎。

旺裕轮胎，与您共建美好生活，开创美好未来！

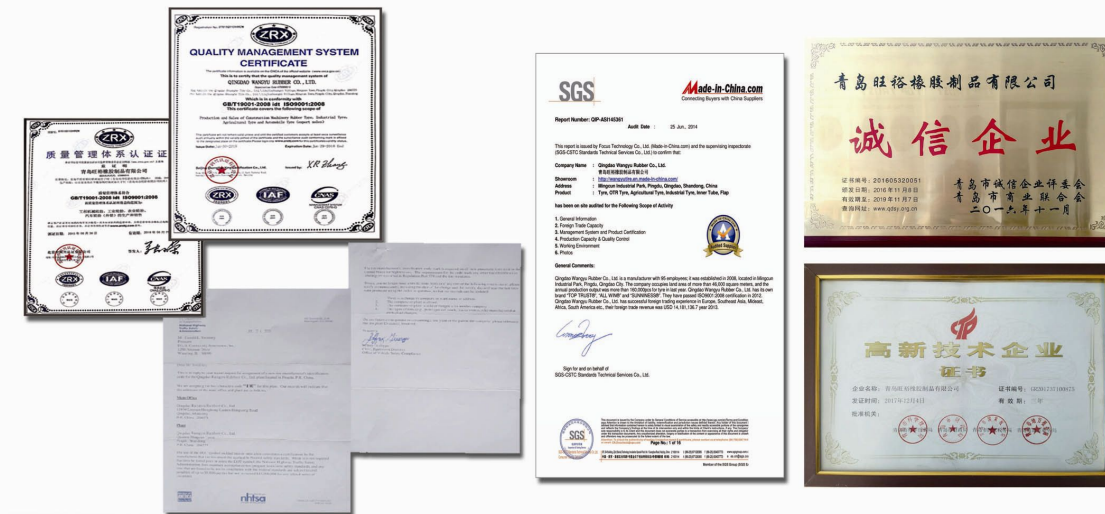
Established in 1996, QINGDAO WANGYU RUBBER CO.,LTD is located in Qingdao, Shandong Province, China, where the 2018 "Shanghai Cooperation Summit" was held, which is the third largest container port in China.

Our company covers an area of more than 100000 sqm and has more than 500 employees with an annual output of 1.2 million sets of tires, inner tubes, flaps etc. In order to ensure the predominance of tires, our manufacturer equips advanced rubber mixing center, full-automatic turn-up bladder building machine and intelligent vulcanization equipment into production. The product series mainly include OTR tires, Industrial tires, Agricultural tires, Truck tires, Light truck tires, Solid tires, Desert tires, ATV/UTV tires, Inner tubes and Flaps, covering more than 300 specifications with over 200HC exports per month. Certified by ISO9001: 2015, DOT, SGS and other certifications, our company has been assessed as "High-tech Enterprises", "Integrity Enterprises", awarded "Targeted Poverty Alleviation Advanced Units" and other honorary titles as well.

We have been adhering to the core value "Quality First, Customer First" for more than 20 years, operating the enterprise with integrity and making every tire for customers with the style of striving for perfection.

WANGYU Tire, joining hands with you for a better life and a better future!

WHY CHOOSE US



目 录

工程机械轮胎	01
<i>OFF-THE-ROAD TYRES</i>	
工业车辆充气轮胎	04
<i>INDUSTRIAL PNEUMATIC TYRES</i>	
工业车辆实心轮胎	07
<i>INDUSTRIAL SOLID TYRES</i>	
农业轮胎	09
<i>AGRICULTURAL TYRES</i>	
载重汽车轮胎	13
<i>TRUCK AND BUS BIAS TYRES</i>	
沙漠胎	15
<i>SAND TYRES</i>	
ATV/UTV专用轮胎	17
<i>ATV/UTV TYRES</i>	
轻型载重汽车轮胎	19
<i>LIGHT TRUCK BIAS TYRES</i>	
垫带/内胎	22
<i>FLAPS AND INNER TUBES</i>	
轮胎使用说明	27
<i>GUIDELINE ON HOW TO USE TYRES</i>	

OFF-THE-ROAD TYRES

工程机械轮胎

适用于重型自卸汽车、铲运机和装卸机在多种条件下作业，具有广泛的适用性，特殊的胎面和胶料配方及强力胎体结构设计，使其具有优良的耐热、耐磨耗性能和优良的牵引性能，是各种矿山、建筑工地广泛采用的经久耐用的轮胎产品。

Broad applicability, suitable for heavy dump trucks, scrapers and loaders under various conditions; excellent heat and wearing resistance and strong traction due to the special tread and rubber formula and strong carcass design; widely used as durable tyres in various mines and construction sites.





E-3/L-3

规格 TIRE SIZE	标准轮辋 STANDARD RIM	层级 PLY RATING	花纹深 (mm) DEEP	新胎充气尺寸 (mm) INFLATED SIZE OF NEW TIRE		最大负荷 (Kg) LOAD	相应气压 (Kpa) PRESSURE	备注 (Km/h)	有无内胎 (type)
				断面宽 SECTION WIDTH	外直径 OVERALL DIAMETER				
29.5-25	25.00	32	36	710	1840	12000	335	50/10	TT/TL
29.5-25	25.00	28	36	710	1840	11500	325	50/10	TT/TL
26.5-25	22.00	32	35	645	1743	10000	350	50/10	TT/TL
26.5-25	22.00	28	35	645	1743	9250	300	50/10	TT/TL
26.5-25	22.00	24	35	645	1743	8250	250	50/10	TT/TL
23.5-25	19.50	28	32	595	1615	8750	400	50/10	TT/TL
23.5-25	19.50	24	32	595	1615	8000	350	50/10	TT/TL
23.5-25	19.50	20	32	595	1615	7300	300	50/10	TT/TL
20.5-25	17.00	24	29	520	1490	6700	400	50/10	TT/TL
20.5-25	17.00	20	29	520	1490	6000	325	50/10	TT/TL
18.00-25	13.00	36	28	495	1615	16000	850	50/10	TT/TL
17.5-25	14.00	20	27	445	1350	4250	400	50/10	TT/TL
17.5-25	14.00	16	27	445	1350	4250	300	50/10	TT/TL
16/70-24	13.00	18	25	410	1175	4000	370	50/10	TT
16/70-20	13.00	18	25	410	1075	3350	450	50/10	TT
16.00-25	11.25	28	26	430	1490	6700	575	50/10	TT/TL
16.00-24	11.25	28	26	430	1490	6500	570	50/10	TT/TL
16.00-24	11.25	24	26	430	1490	6000	475	50/10	TT/TL
16.00-24	11.25	20	26	430	1490	5450	400	50/10	TT/TL
15.5-25	12.00	12	24	395	1275	3250	250	50/10	TT/TL
14/90-16	8.5H	12	16	215	896	1200	270	50/10	TT
14.00-24	10.00	28	24	375	1370	5600	650	50/10	TT/TL
14.00-24	10.00	24	24	375	1370	5150	575	50/10	TT/TL
14.00-24	10.00	20	24	375	1370	4625	475	50/10	TT/TL
1200-16	8.50	12	20	244	884	1245	390	50/10	TT/TL
7.50-16	6.00	10	20	215	810	2100	450	50/10	TT



L-5

规格 TIRE SIZE	标准轮辋 STANDARD RIM	层级 PLY RATING	花纹深 (mm) DEEP	新胎充气尺寸 (mm) INFLATED SIZE OF NEW TIRE		最大负荷 (Kg) LOAD	相应气压 (Kpa) PRESSURE	备注 (Km/h)	有无内胎 (type)
				断面宽 SECTION WIDTH	外直径 OVERALL DIAMETER				
26.5-25	22.00/3.5	32	82	675	1800	17000	550	50/10	TL
26.5-25	22.00/3.5	28	82	675	1800	15500	475	50/10	TL
23.5-25	19.50/2.5	28	72	595	1675	13600	550	50/10	TL
23.5-25	19.50/2.5	24	72	595	1675	12500	475	50/10	TL
20.5-25	17.00/2.0	28	66	520	1550	11500	625	50/10	TL
20.5-25	17.00/2.0	24	66	520	1550	10300	535	50/10	TL
17.5-25	14.00/1.5	24	60	445	1400	9000	625	50/10	TL
17.5-25	14.00/1.5	20	60	445	1400	8250	575	50/10	TL



规格 TIRE SIZE	标准轮辋 STANDARD RIM	层级 PLY RATING	花纹深 (mm) DEEP	新胎充气尺寸 (mm) INFLATED SIZE OF NEW TIRE		最大负荷 (Kg) LOAD	相应气压 (Kpa) PRESSURE	备注 (Km/h)	有无内胎 (type)
				断面宽 SECTION WIDTH	外直径 OVERALL DIAMETER				
23.5-25	19.50	24	32	595	1615	8000	350	50/10	TT/TL
23.5-25	19.50	20	32	595	1615	7300	300	50/10	TT/TL
20.5-25	17.00	24	29	520	1490	6700	400	50/10	TT/TL
20.5-25	17.00	20	29	520	1490	6000	325	50/10	TT/TL
17.5-25	14.00	20	27	445	1350	4250	400	50/10	TT/TL
17.5-25	14.00	16	27	445	1350	4250	300	50/10	TT/TL
16/70-20	13.00	18	25	410	1075	3350	450	50/10	TT
20.5/70-16	10.00	14	16	353	915	1600	390	50/10	TT



E-3/L-3NEW

规格 TIRE SIZE	标准轮辋 STANDARD RIM	层级 PLY RATING	花纹深 (mm) DEEP	新胎充气尺寸 (mm) INFLATED SIZE OF NEW TIRE		最大负荷 (Kg) LOAD	相应气压 (Kpa) PRESSURE	备注 (Km/h)	有无内胎 (type)
				断面宽 SECTION WIDTH	外直径 OVERALL DIAMETER				
17.5-25	14.00/1.5	20	60	445	1365	8250	575	50/10	TL



L-5S

规格 TIRE SIZE	标准轮辋 STANDARD RIM	层级 PLY RATING	花纹深 (mm) DEEP	新胎充气尺寸 (mm) INFLATED SIZE OF NEW TIRE		最大负荷 (Kg) LOAD	相应气压 (Kpa) PRESSURE	备注 (Km/h)	有无内胎 (type)
				断面宽 SECTION WIDTH	外直径 OVERALL DIAMETER				
900-20	7.00	14	/	255	1015	4375	725	10	TT
900-20	7.00	16	/	255	1015	4750	825	10	TT



C-1

规格 TIRE SIZE	标准轮辋 STANDARD RIM	层级 PLY RATING	花纹深 (mm) DEEP	新胎充气尺寸 (mm) INFLATED SIZE OF NEW TIRE		最大负荷 (Kg) LOAD	相应气压 (Kpa) PRESSURE	备注 (Km/h)	有无内胎 (type)
				断面宽 SECTION WIDTH	外直径 OVERALL DIAMETER				
15.5-25	12.00	12	25	360	1254	2650	225	50/10	TT/TL
17.5-25	14.00	16	24	440	1330	3350	275	50/10	TL
14.00-24	8.00TG	14	23.5	360	1350	3450	325	50/10	TT/TL
13.00-24	8.00TG	14	23.5	330	1280	3000	350	50/10	TT/TL



G2

规格 TIRE SIZE	标准轮辋 STANDARD RIM	层级 PLY RATING	花纹深 (mm) DEEP	新胎充气尺寸 (mm) INFLATED SIZE OF NEW TIRE		最大负荷 (Kg) LOAD	相应气压 (Kpa) PRESSURE	备注 (Km/h)	有无内胎 (type)
				断面宽 SECTION WIDTH	外直径 OVERALL DIAMETER				
1300-25	8.50	28	26	307	1297	4600	700	50/10	TT



SH-108

INDUSTRIAL PNEUMATIC TYRES

工业车辆充气轮胎

适用于铲运车、叉车，在港口、工厂、仓库等环境下作业，具有良好的抗切割、耐磨损性能，宽厚的胎面花纹，提供了良好的接地及牵引性能，自洁性好，寿命长。

Suitable for scrapers and forklifts in areas like ports, factories, warehouses ,etc; excellent cutting and wearing resistance; good contact and traction performance provided by thick tread pattern; good self-cleaning capacity; long life-span.

规格 TIRE SIZE	标准轮辋 STANDARD RIM	层级 PLY RATING	花纹深 (mm) DEEP	新胎充气尺寸 (mm) INFLATED SIZE OF NEW TIRE		最大负荷 (Kg) LOAD	相应气压 (Kpa) PRESSURE
				断面宽 SECTION WIDTH	外直径 OVERALL DIAMETER		
1000-20	7.5	16	19	278	1060	3230	690
900-20	7.0	14	19	259	1025	2770	720



SH-258

规格 TIRE SIZE	标准轮辋 STANDARD RIM	层级 PLY RATING	花纹深 (mm) DEEP	新胎充气尺寸 (mm) INFLATED SIZE OF NEW TIRE		最大负荷 (Kg) LOAD	相应气压 (Kpa) PRESSURE
				断面宽 SECTION WIDTH	外直径 OVERALL DIAMETER		
12.00-20	8.5	20	32	315	1125	10640	900
10.00-20	7.5	16	30	278	1055	8320	830



SH-288

规格 TIRE SIZE	标准轮辋 STANDARD RIM	层级 PLY RATING	花纹深 (mm) DEEP	新胎充气尺寸 (mm) INFLATED SIZE OF NEW TIRE		最大负荷 (Kg) LOAD	相应气压 (Kpa) PRESSURE
				断面宽 SECTION WIDTH	外直径 OVERALL DIAMETER		
8.25-15	6.50	14	17	235	840	3700	800
8.25-12	7.00	12	15	235	696	2850	790
28*9-15	7.0	14	17	230	700	3250	730
750-15	6.00	12	15	215	808	2650	790
700-15	5.5	12	15	178	735	2665	860
7.00-12	5.00S	12	15	190	676	2720	860
7.00-9	5.00S	10	13	190	590	2145	850
6.50-10	5.00F	10	13.5	175	510	2170	1000
6.00-9	4.00E	10	11.5	160	540	1680	860
5.00-8	3.50D	10	10	137	470	1290	510



SH-278



R-3

规格 TIRE SIZE	标准轮辋 STANDARD RIM	层级 PLY RATING	花纹深 (mm) DEEP	新胎充气尺寸 (mm) INFLATED SIZE OF NEW TIRE		最大负荷 (Kg) LOAD	相应气压 (Kpa) PRESSURE	有无内胎 (type)
				断面宽 SECTION WIDTH	外直径 OVERALL DIAMETER			
23.1-26	DW20	12	16	595	1426	3610	170	TL



R-4

规格 TIRE SIZE	标准轮辋 STANDARD RIM	层级 PLY RATING	花纹深 (mm) DEEP	新胎充气尺寸 (mm) INFLATED SIZE OF NEW TIRE		最大负荷 (Kg) LOAD	相应气压 (Kpa) PRESSURE	有无内胎 (type)
				断面宽 SECTION WIDTH	外直径 OVERALL DIAMETER			
18.4-26	DW16A	12	27	448	1405	2985	230	TL
18.4-24	DW16	12	26	444	1365	3750	250	TL
21L-24	DW18	12	26	533	1400	2410	190	TL
19.5L-24	DW16	12	25	495	1340	2145	210	TL
17.5L-24	W15L	10	25	445	1265	1725	150	TL
16.9-28	W15L	10	25	430	1435	2380	200	TL
16.9-24	W15L	10	25	430	1335	2230	200	TL



R-4

规格 TIRE SIZE	标准轮辋 STANDARD RIM	层级 PLY RATING	花纹深 (mm) DEEP	新胎充气尺寸 (mm) INFLATED SIZE OF NEW TIRE		最大负荷 (Kg) LOAD	相应气压 (Kpa) PRESSURE	有无内胎 (type)
				断面宽 SECTION WIDTH	外直径 OVERALL DIAMETER			
12.5/80-18	9.00	12	25.5	317	940	2625	370	TL
10.5/80-18	9.00	10	22	279	875	2000	400	TL



L-2

规格 TIRE SIZE	标准轮辋 STANDARD RIM	层级 PLY RATING	花纹深 (mm) DEEP	新胎充气尺寸 (mm) INFLATED SIZE OF NEW TIRE		最大负荷 (Kg) LOAD	相应气压 (Kpa) PRESSURE	有无内胎 (type)
				断面宽 SECTION WIDTH	外直径 OVERALL DIAMETER			
15-19.5	11.75	14	22	390	1020	4565	480	TL
14-17.5	10.50	14	22	350	920	3875	550	TL
12-16.5	9.75	10	21	307	840	2540	450	TL
10-16.5	8.25	8	21	264	770	1880	410	TL

INDUSTRIAL SOLID TYRES 工业车辆实心轮胎





SH-238

Size 规格	Rim 标准轮辋	Overall Diameter 外直径 mm	Section Width 断面宽 mm	Load capacity(Kg) 不同速度下最大载重量						Other Industrial Vehicles 其他工业车辆
				Balance forklift 平衡式叉车						
				10km/h		16km/h		26km/h		16km/h
Drive 驱动轮	Steer 转向轮	Drive 驱动轮	Steer 转向轮	Drive 驱动轮	Steer 转向轮					
5.00-8	3	458	127	1210	970	1175	880	1095	820	840
16×6-8	4.33	399	147	1500	1200	1445	1085	1345	1010	1035
18×7-8	4.33	443	157	2350	1880	2265	1700	2110	1585	1620
23×9-10	6.5	575	193	4005	3205	3845	2885	3605	2705	2765
6.00-9	4	521	145	1920	1535	1855	1390	1730	1295	1325
6.50-10	5	565	155	2840	2110	2545	1910	2370	1780	1820
7.00-9	5	550	159	2370	2015	2805	1925	2370	1750	1785
7.00-12	5	655	161	3015	2410	2910	2185	2710	2035	2075
7.00-15	5.5/6	740	180	3590	2870	3465	2600	3225	2420	2475
7.50-15	5.5/6	740	180	3690	2950	3425	2570	3190	2395	2450
8.25-15	6.5	805	207	4940	3950	4765	3575	4440	3330	3045
8.25-12	6.5	695	192	3326	2660	3215	2410	2995	2245	2295
8.15-15 (28×9-15)	7	710	209	4090	3270	3945	2960	3675	2755	2820
250-15	7.5	680	230	4366	3400	4220	3160	3930	2955	3010
300-15	8	780	241	5990	4700	5780	4335	5380	4037	4130
9.00-20	6.5/7	935	222	6450	5160	6235	4675	5805	4355	4450
10.00-20	7.5/8	1003	266	7240	5795	6995	5240	6610	4885	4995
11.00-20	8	1003	266	7560	6050	7300	5490	6810	5120	5210
12.00-20	8/8.5	1008	283	8800	7000	8500	6925	8000	6450	6595
12.00-24	8.5	1247	309	9575	7655			8600	6450	



SH-268

Size 规格	Rim 标准轮辋	Overall Diameter 外直径 mm	Section Width 断面宽 mm	Load capacity(Kg) 不同速度下最大载重量						Other Industrial Vehicles 其他工业车辆
				Balance forklift 平衡式叉车						
				10km/h		16km/h		26km/h		16km/h
Drive 驱动轮	Steer 转向轮	Drive 驱动轮	Steer 转向轮	Drive 驱动轮	Steer 转向轮					
5.00-8	3	458	127	1210	970	1175	880	1095	820	840
18×7-8	4.33	443	157	2350	1880	2265	1700	2110	1585	1620
6.00-9	4	521	145	1920	1535	1855	1390	1730	1295	1325
6.50-10	5	565	155	2840	2110	2545	1910	2370	1780	1820
7.00-9	5	550	159	2370	2015	2805	1925	2370	1750	1785
7.00-12	5	655	161	3015	2410	2910	2185	2710	2035	2075
8.25-15	6.5	805	207	4940	3950	4765	3575	4440	3330	3045
8.25-12	6.5	695	192	3326	2660	3215	2410	2995	2245	2295
8.15-15 (28×9-15)	7	710	209	4090	3270	3945	2960	3675	2755	2820



SH-518

Size 规格	Rim 标准轮辋	Overall Diameter 外直径 mm	Section Width 断面宽 mm	Load(Max) 最大载重量 Kg
31*6*10	10-16.5	740	235	3415
33*6*11	12-16.5	838	276	4075
36*7*11	14-17.5	914	276	5650
40*9*13	15-19.5	1016	336	7545
38*7*13	16/70-20	960	330	6320

AGRICULTURAL TYRES

农业轮胎

规格齐全的人字(R1)型轮胎，具有超强的抓着力和自洁性，特殊的配方设计，增强了轮胎抗老化性，耐磨性能高，适用于农场、伐木场、田间等地方作业。

Complete specifications of R1 pattern tyres, superior grip and self-cleaning capacity, good aging and wearing resistance enhanced by special formula design suitable for farms, logging areas and fields.





R-1

规格 TIRE SIZE	标准轮辋 STANDARD RIM	层级 PLY RATING	花纹深 (mm) DEEP	花纹对数 PAIRS OF PATTERN	新胎充气尺寸 (mm) INFLATED SIZE OF NEW TIRE		最大负荷 (Kg) LOAD	相应气压 (Kpa) PRESSURE
					断面宽 SECTION WIDTH	外直径 OVERALL DIAMETER		
23.1-26	DW20	10	36	19	554	1542	3245	140
20.8-38	W18L	12	38	21	528	1835	4000	200
18.4-42	W16	10	35	22	467	1857	3330	180
18.4-38	W16L	10	37	21	467	1755	3165	180
18.4-34	W16L	10	36	20	467	1655	2990	180
18.4-30	W16L	10	36	19	467	1550	2815	180
18.4-26	DW16	10	35	19	467	1450	2645	180
16.9-38	W15L	10	36	20	464	1685	2760	200
16.9-34	W15L	10	36	20	429	1585	2605	200
16.9-30	W15L	10	36	19	447	1499	2455	200
16.9-28	W15L	10	35	18	430	1435	2380	200
16.9-24	W15L	10	33	18	430	1335	2230	200
15.5-38	W14L	10	34	22	391	1549	1760	207
15.5/80-24	W13	14	35	18	375	1240	3150	350
15-24	W14	10	32	16	400	1310	2800	280
14.9-30	W13	10	32	21	378	1415	2190	230
14.9-28	W13	10	34	19	378	1365	2120	230
14.9-26	W13	10	32	20	378	1315	2055	230
14.9-24	W15L	10	22	17	378	1265	1990	230
13.6-38	W12	10	34	22	328	1548	2215	250
13.6-28	W12	10	31	19	345	1310	1910	250
13.6-24	W12	10	30	18	345	1210	1790	250
12.4-28	W11	10	29	20	315	1260	1600	240
12.4-24	W11	10	29	18	315	1160	1450	240
12-38	I1	10	35	23	298	1563	1600	210
11.2-38	10.00	10	32	22	284	1448	1180	221
11.2-28	W10	10	28	18	285	1205	1490	310
11.2-24	W10	8	26	18	285	1105	1225	240
10.0/75-15.3	9.00	10	28.5	20	260	892	1625	390
9.50-24	W8	8	25	21	240	1050	1110	280
9.50-20	W8	8	25	19	240	1050	955	280
8.5-20	W7	8	24	20	210	895	715	260
8.3-24	W7	6	24	23	210	995	810	240
8.3-20	W7	8	24	20	210	895	715	260
7.50-20	5.50F	8	21	24	205	910	800	230
7.50-16	5.50F	8	21	19/22	205	810	700	230
6.00-16	4.50E	8	19	19	165	745	520	270
6.00-12	4.50E	8	20	16	165	640	450	270
5.50-17	4.00E	6	18	/	140	750	780	520
5.00-12	4.00E	6	15	13	145	590	320	210



R-1

规格 TIRE SIZE	标准轮辋 STANDARD RIM	层级 PLY RATING	花纹深 (mm) DEEP	新胎充气尺寸 (mm) INFLATED SIZE OF NEW TIRE		最大负荷 (Kg) LOAD	相应气压 (Kpa) PRESSURE
				断面宽 SECTION WIDTH	外直径 OVERALL DIAMETER		
8.3-22	W6.5	6	42	190	940	750	240



SH-248

规格 TIRE SIZE	标准轮辋 STANDARD RIM	层级 PLY RATING	花纹深 (mm) DEEP	新胎充气尺寸 (mm) INFLATED SIZE OF NEW TIRE		最大负荷 (Kg) LOAD	相应气压 (Kpa) PRESSURE
				断面宽 SECTION WIDTH	外直径 OVERALL DIAMETER		
5.00-14	3.00D	8	8	130	615	895	530

规格 TIRE SIZE	标准轮辋 STANDARD RIM	层级 PLY RATING	花纹深 (mm) DEEP	新胎充气尺寸 (mm) INFLATED SIZE OF NEW TIRE		最大负荷 (Kg) LOAD	相应气压 (Kpa) PRESSURE
				断面宽 SECTION WIDTH	外直径 OVERALL DIAMETER		
6.50-20	5.00F	8	11	180	860	865	420
6.50-16	4.50E	8	10	175	760	735	420
6.00-16	4.00E	6	10	160	740	560	340
5.00-15	4.00	6	8.5	120	658	465	420
4.00-16	3.00D	6	8	122	655	350	340
4.00-14	3.00D	6	7	110	590	405	255
4.00-12	3.00D	6	7	110	535	300	330



F2-1

规格 TIRE SIZE	标准轮辋 STANDARD RIM	层级 PLY RATING	花纹深 (mm) DEEP	新胎充气尺寸 (mm) INFLATED SIZE OF NEW TIRE		最大负荷 (Kg) LOAD	相应气压 (Kpa) PRESSURE
				断面宽 SECTION WIDTH	外直径 OVERALL DIAMETER		
11.00-16	W10L	8	24	315	970	1180	310
10.00-16	W8L	8	21	275	910	1060	310
7.50-18	5.50F	8	12	205	860	945	370
7.50-16	5.50F	8	11	205	810	870	370



F2-2

规格 TIRE SIZE	标准轮辋 STANDARD RIM	层级 PLY RATING	花纹深 (mm) DEEP	新胎充气尺寸 (mm) INFLATED SIZE OF NEW TIRE		最大负荷 (Kg) LOAD	相应气压 (Kpa) PRESSURE
				断面宽 SECTION WIDTH	外直径 OVERALL DIAMETER		
11.00-16	W10L	8	23	315	970	1180	310
10.00-16	W8L	8	21	275	910	1060	310



F2-M

规格 TIRE SIZE	标准轮辋 STANDARD RIM	层级 PLY RATING	花纹深 (mm) DEEP	新胎充气尺寸 (mm) INFLATED SIZE OF NEW TIRE		最大负荷 (Kg) LOAD	相应气压 (Kpa) PRESSURE
				断面宽 SECTION WIDTH	外直径 OVERALL DIAMETER		
11L-16	8	8	13.5	279	838	1175	220
11L-15	8	8	13	279	813	1130	220



F3

规格 TIRE SIZE	标准轮辋 STANDARD RIM	层级 PLY RATING	花纹深 (mm) DEEP	新胎充气尺寸 (mm) INFLATED SIZE OF NEW TIRE		最大负荷 (Kg) LOAD	相应气压 (Kpa) PRESSURE
				断面宽 SECTION WIDTH	外直径 OVERALL DIAMETER		
10.0/75-15.3	9.00	14	9	264	740	1915	490
10.0/75-15.3	9.00	12	9	264	740	1720	430
10.0/75-15.3	9.00	10	9	264	740	1525	390



IMPT F-3



SH-218

规格 TIRE SIZE	标准轮辋 STANDARD RIM	层级 PLY RATING	花纹深 (mm) DEEP	新胎充气尺寸 (mm) INFLATED SIZE OF NEW TIRE		最大负荷 (Kg) LOAD	相应气压 (Kpa) PRESSURE
				断面宽 SECTION WIDTH	外直径 OVERALL DIAMETER		
5.00-16	3.00D	10	8	130	665	850	400
5.00-14	3.00D	8	8	130	615	895	530
4.50-16	3.00D	8	8	122	655	615	360
4.50-14	3.00D	8	7	122	605	680	426
4.00-14	3.00D	8	7	112	590	405	255
4.00-12	3.00D	6	7	112	520	300	330



SH-618

规格 TIRE SIZE	标准轮辋 STANDARD RIM	层级 PLY RATING	花纹深 (mm) DEEP	新胎充气尺寸 (mm) INFLATED SIZE OF NEW TIRE		最大负荷 (Kg) LOAD	相应气压 (Kpa) PRESSURE
				断面宽 SECTION WIDTH	外直径 OVERALL DIAMETER		
4.00-8	3.00D	4	6.5	112	415	225	275



I-1

规格 TIRE SIZE	标准轮辋 STANDARD RIM	层级 PLY RATING	花纹深 (mm) DEEP	新胎充气尺寸 (mm) INFLATED SIZE OF NEW TIRE		最大负荷 (Kg) LOAD	相应气压 (Kpa) PRESSURE
				断面宽 SECTION WIDTH	外直径 OVERALL DIAMETER		
12.5L-15	10.00	8	9.5	318	823	1400	360
11L-16	W8L	8	9	280	800	1115	280
11L-15	W8L	8	9	280	775	1070	280
11L-14	8KB	8	9	280	750	1245	220
10-15	9.00	10	9	270	753	1520	390
9.5L-15	8LB	8	8.5	240	765	1100	280
9.5L-14	7.00	8	8.5	241	741	1150	300



SH-628

规格 TIRE SIZE	标准轮辋 STANDARD RIM	层级 PLY RATING	花纹深 (mm) DEEP	新胎充气尺寸 (mm) INFLATED SIZE OF NEW TIRE		最大负荷 (Kg) LOAD	相应气压 (Kpa) PRESSURE
				断面宽 SECTION WIDTH	外直径 OVERALL DIAMETER		
4.00-8	3.00D	4	6.5	112	415	225	275

TRUCK AND BUS BIAS TYRES

载重汽车轮胎

矿用高耐磨轮胎:

Suitable for trucks and buses on all kinds of roads.
The strong carcass and unique tread compound formula offer good wearing resistance and traction performance.
Great load-capacity and good steering performance.





SH-368

规格 TIRE SIZE	标准轮辋 STANDARD RIM	层级 PLY RATING	花纹深 (mm) DEEP	新胎充气尺寸 (mm) INFLATED SIZE OF NEW TIRE		最大负荷 (Kg) LOAD	相应气压 (Kpa) PRESSURE
				断面宽 SECTION WIDTH	外直径 OVERALL DIAMETER		
14.00-20	10.0	18	21	375	1240	4000	600



SH-328

规格 TIRE SIZE	标准轮辋 STANDARD RIM	层级 PLY RATING	花纹深 (mm) DEEP	新胎充气尺寸 (mm) INFLATED SIZE OF NEW TIRE		双胎最大负荷 (Kg) LOAD DUAL		单胎最大负荷 (Kg) LOAD SINGLE		双胎气压 (Kpa) PRESSURE	单胎气压 (Kpa) PRESSURE
				断面宽 SECTION WIDTH	外直径 OVERALL DIAMETER						
12.00-24	8.5	18	15	350	1225	3680	4195	740	810		
12.00-20	7.5	18	15	350	1125	3270	3730	740	810		
10.00-20	7.5	16	14.5	278	1055	2630	3000	740	810		



SH-108

规格 TIRE SIZE	标准轮辋 STANDARD RIM	层级 PLY RATING	花纹深 (mm) DEEP	新胎充气尺寸 (mm) INFLATED SIZE OF NEW TIRE		双胎最大负荷 (Kg) LOAD DUAL		单胎最大负荷 (Kg) LOAD SINGLE		双胎气压 (Kpa) PRESSURE	单胎气压 (Kpa) PRESSURE
				断面宽 SECTION WIDTH	外直径 OVERALL DIAMETER						
12.00-20	8.0	20	29	310	1130	4670	6335	790			



SH-118

规格 TIRE SIZE	标准轮辋 STANDARD RIM	层级 PLY RATING	花纹深 (mm) DEEP	新胎充气尺寸 (mm) INFLATED SIZE OF NEW TIRE		双胎最大负荷 (Kg) LOAD DUAL		单胎最大负荷 (Kg) LOAD SINGLE		双胎气压 (Kpa) PRESSURE	单胎气压 (Kpa) PRESSURE
				断面宽 SECTION WIDTH	外直径 OVERALL DIAMETER						
12.00-24	8.5	18	15	315	1225	3680	4195	740	810		
12.00-20	8.5	18	15	315	1125	3270	3730	740	810		
11.00-22	8.0	18	14.5	293	1130	3410	3830	810	910		
11.00-20	8.0	16	14.5	293	1085	2780	3270	740	810		
10.00-20	7.5	16	14.5	278	1055	2630	3000	740	810		
9.00-20	7	14	14	259	1018	2255	2575	700	770		
8.25-20	6.50H	14	12.5	235	974	1940	2205	740	810		



SH-128

规格 TIRE SIZE	标准轮辋 STANDARD RIM	层级 PLY RATING	花纹深 (mm) DEEP	新胎充气尺寸 (mm) INFLATED SIZE OF NEW TIRE		双胎最大负荷 (Kg) LOAD DUAL		单胎最大负荷 (Kg) LOAD SINGLE		双胎气压 (Kpa) PRESSURE	单胎气压 (Kpa) PRESSURE
				断面宽 SECTION WIDTH	外直径 OVERALL DIAMETER						
12.00-24	8.5	18	15	315	1225	3680	4195	740	810		
12.00-20	8.5	18	15	315	1125	3270	3730	740	810		
11.00-22	8.0	18	14.5	293	1130	3410	3830	810	910		
11.00-20	8.0	16	14.5	293	1085	2780	3270	740	810		
10.00-20	7.5	16	14.5	278	1055	2630	3000	740	810		
9.00-20	7	14	14	259	1018	2255	2575	700	770		
8.25-20	6.50H	14	12.5	235	974	1940	2205	740	810		

SAND TYRES 沙漠胎





SH-358

规格 TIRE SIZE	标准轮辋 STANDARD RIM	层级 PLY RATING	花纹深 (mm) DEEP	新胎充气尺寸 (mm) INFLATED SIZE OF NEW TIRE		最大负荷 (Kg) LOAD	相应气压 (Kpa) PRESSURE
				断面宽 SECTION WIDTH	外直径 OVERALL DIAMETER		
12.00-20	8.5	12	15	290	1150	4750	580



SH-378

规格 TIRE SIZE	标准轮辋 STANDARD RIM	层级 PLY RATING	花纹深 (mm) DEEP	新胎充气尺寸 (mm) INFLATED SIZE OF NEW TIRE		最大负荷 (Kg) LOAD	相应气压 (Kpa) PRESSURE
				断面宽 SECTION WIDTH	外直径 OVERALL DIAMETER		
16.00-20	11.25	18	10	430	1390	4800	400
14.00-20	10.0	18	9	330	1215	3270	425



SH-308

规格 TIRE SIZE	标准轮辋 STANDARD RIM	层级 PLY RATING	花纹深 (mm) DEEP	新胎充气尺寸 (mm) INFLATED SIZE OF NEW TIRE		最大负荷 (Kg) LOAD	相应气压 (Kpa) PRESSURE
				断面宽 SECTION WIDTH	外直径 OVERALL DIAMETER		
14.00-20	10.0	18	9	330	1215	3270	425



SH-318

规格 TIRE SIZE	标准轮辋 STANDARD RIM	层级 PLY RATING	花纹深 (mm) DEEP	新胎充气尺寸 (mm) INFLATED SIZE OF NEW TIRE		最大负荷 (Kg) LOAD	相应气压 (Kpa) PRESSURE	备注 (TYPE)
				断面宽 SECTION WIDTH	外直径 OVERALL DIAMETER			
9.00-17	17INCH	8	8.5	225	856	1320	310	TL
9.00-16	16INCH	8	8	225	834	1360	310	TL



SH-338

规格 TIRE SIZE	标准轮辋 STANDARD RIM	层级 PLY RATING	花纹深 (mm) DEEP	新胎充气尺寸 (mm) INFLATED SIZE OF NEW TIRE		最大负荷 (Kg) LOAD	相应气压 (Kpa) PRESSURE
				断面宽 SECTION WIDTH	外直径 OVERALL DIAMETER		
14.00-20	10.0	18	9	330	1215	3270	425

ATV/UTV TYRES ATV/UTV专用轮胎

Top notch handling in dirt, mud or rock.
Great in the desert.
Superior traction in woods.
Additional shoulder lugs protect rim and sidewall.





WY-601

规格 TIRE SIZE	标准轮辋 STANDARD RIM	层级 PLY RATING	花纹深 (mm) DEEP	新胎充气尺寸 (mm) INFLATED SIZE OF NEW TIRE		最大负荷 (Kg) LOAD	相应气压 (Kpa) PRESSURE
				断面宽 SECTION WIDTH	外直径 OVERALL DIAMETER		
21X7-10	6.0	4	11	190	512	205 LBS	5 PSI
22X10-10	8.5	4	11.5	256	519.5	300 LBS	5 PSI



WY-602

规格 TIRE SIZE	标准轮辋 STANDARD RIM	层级 PLY RATING	花纹深 (mm) DEEP	新胎充气尺寸 (mm) INFLATED SIZE OF NEW TIRE		最大负荷 (Kg) LOAD	相应气压 (Kpa) PRESSURE
				断面宽 SECTION WIDTH	外直径 OVERALL DIAMETER		
26X9-12	7.0	6	20	210	640	410 LBS	7 PSI
26X11-12	8.5	6	20	260	634	480 LBS	7 PSI



WY-603

规格 TIRE SIZE	标准轮辋 STANDARD RIM	层级 PLY RATING	花纹深 (mm) DEEP	新胎充气尺寸 (mm) INFLATED SIZE OF NEW TIRE		最大负荷 (Kg) LOAD	相应气压 (Kpa) PRESSURE
				断面宽 SECTION WIDTH	外直径 OVERALL DIAMETER		
26X9-14	7.5	6	19.1	228	646	801 LBS	18 PSI
26X11-14	9.0	6	19	273	646	966 LBS	18 PSI



LIGHT TRUCK BIAS TYRES 轻型载重汽车轮胎

轻型载重汽车轮胎:

Good pattern design provides excellent ride stability and great traction on all kinds of road conditions.

Reinforced structure and special abrasion-resistant tread compound deliver extra puncture resistance and load bearing capability with more mileage.

Complete specifications of bias truck tyres lug and rib pattern.





SH-168

规格 TIRE SIZE	标准轮辋 STANDARD RIM	层级 PLY RATING	花纹深 (mm) DEEP	新胎充气尺寸 (mm) INFLATED SIZE OF NEW TIRE		双胎 最大负荷 (Kg) LOAD DUAL	单胎 最大负荷 (Kg) LOAD SINGLE	气压 (Kpa) PRESSURE
				断面宽 SECTION WIDTH	外直径 OVERALL DIAMETER			
8.25-16	6.50H	16	12	235	855	1500	1705	630
7.50-16	6.00G	16	11	215	805	1320	1500	730
7.00-16	5.50F	14	10	200	775	1075	1220	630
6.50-16	5.50F	10	10	185	750	860	975	530

规格 TIRE SIZE	标准轮辋 STANDARD RIM	层级 PLY RATING	花纹深 (mm) DEEP	新胎充气尺寸 (mm) INFLATED SIZE OF NEW TIRE		双胎 最大负荷 (Kg) LOAD DUAL	单胎 最大负荷 (Kg) LOAD SINGLE	双胎气压 (Kpa) DUAL PRESSURE	单胎气压 (Kpa) SINGLE PRESSURE
				断面宽 SECTION WIDTH	外直径 OVERALL DIAMETER				
7.50-16	6.00G	14	16	215	815	1320	1500	700	730



SH-138



SH-148

规格 TIRE SIZE	标准轮辋 STANDARD RIM	层级 PLY RATING	花纹深 (mm) DEEP	新胎充气尺寸 (mm) INFLATED SIZE OF NEW TIRE		双胎 最大负荷 (Kg) LOAD DUAL	单胎 最大负荷 (Kg) LOAD SINGLE	气压 (Kpa) PRESSURE
				断面宽 SECTION WIDTH	外直径 OVERALL DIAMETER			
9.00-16	6.50H	14	12	255	890	1720	1955	630
8.25-16	6.50H	16	12	235	855	1500	1705	630
7.50-20	6	14	12	215	935	1655	1885	810
7.50-16	6.00G	16	11	215	805	1320	1500	730
7.00-20	5.5	12	12	200	904	1385	1580	640
7.00-16	5.50F	14	10	200	775	1075	1220	630
5.00-12	3.50B	8	6	154	582	462	487	400

规格 TIRE SIZE	标准轮辋 STANDARD RIM	层级 PLY RATING	花纹深 (mm) DEEP	新胎充气尺寸 (mm) INFLATED SIZE OF NEW TIRE		双胎 最大负荷 (Kg) LOAD DUAL	单胎 最大负荷 (Kg) LOAD SINGLE	双胎气压 (Kpa) DUAL PRESSURE	单胎气压 (Kpa) SINGLE PRESSURE
				断面宽 SECTION WIDTH	外直径 OVERALL DIAMETER				
8.25-16	6.50H	14	17	235	867	1500	1700	600	630
7.50-16	6.00G	14	16	215	815	1320	1500	700	730
7.00-16	5.50F	12	16	200	785	1060	1215	600	630



SH-158



SH-178

规格 TIRE SIZE	标准轮辋 STANDARD RIM	层级 PLY RATING	花纹深 (mm) DEEP	新胎充气尺寸 (mm) INFLATED SIZE OF NEW TIRE		双胎 最大负荷 (Kg) LOAD DUAL	单胎 最大负荷 (Kg) LOAD SINGLE	气压 (Kpa) PRESSURE
				断面宽 SECTION WIDTH	外直径 OVERALL DIAMETER			
7.50-15	6.00	12	10	215	808	1210	1307	630
7.00-15	5.50F	10	10	200	750	915	1040	530
6.50-15	4.50E	8	10	180	730	720	820	420
6.50-14	4.50E	8	10	180	730	690	785	420
6.00-15	4.50E	8	10	170	705	630	702	420
6.00-14	41/2J	8	8	170	680	600	685	420
6.00-13	41/2J	8	8	170	655	570	655	420
5.50-13	4J	8	8	160	620	500	565	420
5.00-12	3.50B	8	6	154	582	462	487	400

规格 TIRE SIZE	标准轮辋 STANDARD RIM	层级 PLY RATING	花纹深 (mm) DEEP	新胎充气尺寸 (mm) INFLATED SIZE OF NEW TIRE		双胎 最大负荷 (Kg) LOAD DUAL	单胎 最大负荷 (Kg) LOAD SINGLE	双胎气压 (Kpa) DUAL PRESSURE	单胎气压 (Kpa) SINGLE PRESSURE
				断面宽 SECTION WIDTH	外直径 OVERALL DIAMETER				
7.50-16	6.00G	16	11	215	805	1320	1500	730	
7.00-16	5.50F	14	10	200	775	1075	1220	630	
6.50-16	5.50F	10	10	185	750	860	975	530	



SH-188



SH-198

规格 TIRE SIZE	标准轮辋 STANDARD RIM	层级 PLY RATING	花纹深 (mm) DEEP	新胎充气尺寸 (mm) INFLATED SIZE OF NEW TIRE		双胎 最大负荷 (Kg) LOAD DUAL	单胎 最大负荷 (Kg) LOAD SINGLE	气压 (Kpa) PRESSURE
				断面宽 SECTION WIDTH	外直径 OVERALL DIAMETER			
7.00-15	5.50F	10	10	200	750	915	1040	530
6.50-16	5.50F	10	10	185	750	860	975	530
6.50-14	41/2J	8	10	180	705	690	785	420
6.00-16	4.50E	10	8	158	710	755	860	530
6.00-15	4.5E	8	10	170	705	630	720	420
6.00-14	41/2J	8	10	170	680	600	685	420
6.00-13	41/2J	8	8	170	655	570	655	420



FLAPS AND INNER TUBES

垫带、内胎



规格 SIZE	重量(KG) WEIGHT(KG)	宽度(MM) WIDTH(MM)
29.5-25	13.8	670
26.5-25	10.8	570
23.5-25	9.7	520
20.5-25	7.5	425
17.5-25	5.9	325
18.00-25	7.5	425
16.00-25	5.9	325
15.5-25	5.9	325
16.00-24	3.55	225
14.00-24	3.55	225
16/70-24	4.0	320
16/70-20	3.2	320
14.00-20	4.0	240
20.5/70-16	1.55	215
12.00-24	2.8	205
11.00-22	3.9	230
11.00/12.00-20	2.35	215
9.00/10.00-20	2.2	190
7.50/8.25-20	1.6	180
6.50/7.00-16	1.0	155
6.50/7.50/8.25-16	1.15	165
6.50/7.00/7.50-15	0.95	170
8.25/8.15-15	1.2	195
9.00/10.00-16	1.2	180
8.25/7.00-12	0.6	130
6.50/7.00-16	1.0	155
6.50-10	0.65	120
6.00-9	0.45	130
5.00-8	0.295	110



垫带FLAP



垫带FLAP



垫带FLAP

※备注：以上标注的重量和宽度，实物会有出入，具体以实物为准，此表仅供参考。
 ※Remark: The table is for reference only. Any discrepancy in future, please adhere to the actual product.





工程内胎
OTR TUBE

规格 SIZE	气门嘴 VALVE	重量 (KG) WEIGHT(KG)	平叠断面宽(MM) WIDTH(MM)
26.5-25	TRJ1175C/TR179A	20.0	705
23.5-25	TRJ1175C/TR179A	18.0	630
20.5-25	TRJ1175C/TR179A	15.5	560
17.5-25	TRJ1175C/TR179A	10.5	435
15.5-25	TRJ1175C/TR179A	10.5	435
18.00-25	TRJ1175C/TR179A	15.5	630
16.00-25	TRJ1175C/TR179A	10.5	435
16.00-24	TRJ1175C/TR179A	10.0	445
14.00-24	TR179A	7.2	400
14.00-20	TR179A	6.4	370
16/70-24	TR179A/TR218A	7.2	380
16/70-20	TR179A/TR218A	6.0	375
20.5/70-16	TR179A	3.6	315



载重及叉车内胎
TRUCK AND
FORKLIFT TUBE

规格 SIZE	气门嘴 VALVE	重量 (KG) WEIGHT(KG)	平叠断面宽(MM) WIDTH(MM)
12.00-24	TR179A	5.3	350
11.00-22	TR179A	4.2	305
12.00-20	TR179A	4.4	310
11.00-20	TR179A	4.0	305
10.00-20	TR78A	3.75	285
9.00-20	TR175A	3.2	282
9.00-16	TR75A	2.4	250
8.25-20	TR77A	2.3	240
7.00/7.50-20	TR75A	2.3	220
7.00/7.50-20	TR15	2.2	220
8.25-16	TR77A	2.1	230
7.50-16	TR75A	1.8	220
6.50/7.00-16	TR75A	1.7	200
6.00/6.50-16	TR75A	1.45	180
6.50/7.00-15	TR75A	1.4	200
5.50/6.00-13	TR13/TR15	1.1	155
6.00/6.50-14	TR13/TR15	1.15	170
8.25-15	TR75A/JS2	2.1	240
28*9(815)-15	TR75A/JS2	1.8	215
7.50-15	TR75A	1.8	220
8.25-12	TR75A/JS2	1.4	225
7.00-12	TR75A/JS2	1.4	195
6.50-10	TR75A/JS2	1.0	175
7.00-9	TR75A/JS2	0.85	185
6.00-9	TR75A/JS2	0.85	170
5.00-8	JS2	0.75	142



手推车内胎
WHEEL BARROW
TUBE

规格 SIZE	气门嘴 VALVE	重量 (KG) WEIGHT(KG)	平叠断面宽(MM) WIDTH(MM)
4.00-8	TR87/TR13	0.45	110

规格 SIZE	气门嘴 VALVE	重量 (KG) WEIGHT(KG)	平叠断面宽(MM) WIDTH(MM)
23.1-26	TR15	22.0	680
20.8-38	TR218A	15.0	505
18.4-42	TR218A	NA	NA
18.4-38	TR218A	14.0	496
18.4-34	TR218A	12.5	508
18.4-30	TR218A	10.5	505
18.4-26	TR218A	12.0	507
16.9-38	TR218A	13.5	455
16.9-34	TR218A	13.0	---
16.9-30	TR218A	10.0	435
16.9-28	TR218A	9.0	430
16.9-24	TR218A	6.8	415
15.5-38	TR218A	11.0	425
15-24	TR75A	8.9	---
14.9-30	TR218A	9.0	415
14.9-28	TR218A	8.5	420
14.9-26	TR218A	NA	NA
14.9-24	TR218A	6.8	410
13.6-38	TR218A	10.0	375
13.6-28	TR218A	5.8	340
13.6-24	TR218A	5.0	315
12.4-28	TR218A	5.2	340
12.4-24	TR218A	5.0	315
12-38	TR218A	6.8	375
11.2-38	TR218A	6.8	275
11.2-28	TR218A	4.6	300
11.2-24	TR218A	3.65	270
9.5-24	TR218A	3.1	240
9.5-20	TR218A	2.45	220
8.3-24	TR218A	2.8	240
8.3-20	TR218A	2.2	220
750-20	TR218A	2.2	220
750-16	TR218A	1.6	225
750-16	TR15	1.6	225
600-16	TR15	1.45	180
600-12	TR13	1.1	190
550-17	TR13	NA	NA
500-12	TR13	0.86	140
650-20	TR15	1.9	200
650-16	TR218A	1.7	200
650-16	TR15	1.5	200
400-14	TR13	0.75	130
400-12	TR13	0.7	125
500-16	TR13	1.1	155
500-14	TR13	0.75	143
450-16	TR13	1.1	155



农业内胎
AGRICULTURAL TUBE



农业内胎
AGRICULTURAL TUBE



农业内胎
AGRICULTURAL TUBE

※备注：以上标注的重量和宽度，实物会有出入，具体以实物为准，此表仅供参考。
※Remark: The table is for reference only. Any discrepancy in future, please adhere to the actual product.



工程内胎
OTR TUBE

型号 SIZE	气门嘴型号 VALVE	箱量 QTY/CTN
14.00R20	TR179 TRJ1175C	4
14.00R24/25	TR179A	4
16.00R24/25	TRJ1175C TRJ4000	3
18.00R24/25	TRJ1175C TRJ4000	2
15.5R25	TRJ1175C TRJ4000	4
17.5R25	TRJ1175C TRJ4000	3
20.5R25	TRJ1175C TRJ4000	2
23.5R25	TRJ1175C TRJ4000	2
26.5R25	TRJ1175C TRJ4000	2



轻卡内胎
LIGHT TRUCK TUBE

型号 SIZE	气门嘴型号 VALVE	箱量 QTY/CTN
6.00R16	TR15, TR75A TR150	18
6.50R16	TR15, TR150 TR75A	16
7.00R16	TR15, TR150 TR75A	14
7.50R16	TR15, TR13 TR75A TR177A V3027	12
8.25R16	TR75A TR177A	10



卡车内胎
TRUCK BUS TUBE

型号 SIZE	气门嘴型号 VALVE	箱量 QTY/CTN
6.50R20	TR177A	12
7.00R20	TR177A	12
7.50R20	TR177A	12
8.25R20	TR77A	10
9.00R20	TR175A V3045 V3065	9
10.00R20	TR78A V3045 V3065	7
11.00R20	TR78A V3065	6
12.00R20	TR78A V3065	5
12.00R24	TR78A V3065	5



轿车内胎
PASSENGER CAR TUBE

型号 SIZE	气门嘴型号 VALVE	箱量 QTY/CTN
195/205R15	TR15	25
185/195R15	TR15	25
600/195R14	TR13	27
175/185R14	TR13	35
165/185-13	TR13	40

GUIDELINE ON HOW TO USE TYRES

1. Tyre and Rim

- (1) Check carefully before tyre mounting to see if the rim sizes are identical to those marked on sidewalls.
- (2) The tyre should be fitted as much as possible to standard rims or allowable rim range.
- (3) The tyre should not be fitted to deformed rims or non conformity rims.

Warning:

Deformed rims or non-conformity rims will result in premature tyre toe failure or blow out to hurt people.

2. Inflated Pressure

- (1) Rules should be followed to inflate the tyre.
- (2) It is not appropriate to inflate the tyre over pressure and then release the air to standard pressure.
- (3) Check the tyre pressure regularly and replenish when the air pressure is not found sufficient.

Warning:

Tyre under-pressure will cause decreased loading capacity, easy cord breaking and dangerous blow out. Tyre overpressure will cause cord strength loss and dangerous blow out.

3. Load

- (1) Select the tyre of corresponding ply rating and load based on the vehicle's standard loading capacity.
- (2) The tyre of low ply rating can not bear high load. The tyre load can not be increased by the increase of inflated pressure.
- (3) The load should be distributed evenly on the vehicle.

Warning:

Overload will cause a serious injury to the tyre or the people. The vehicle with the load unevenly distributed will cause some of tyres serious overload, which is one of the factors causing accidents.

4. Speed

The tyre should match the vehicle in operating speed and operate in the range of specified speed for vehicle.

Warning:

Over speed will cause quicker tread wear, rapid heat build up, tyre strength deterioration, separations and even tyre blow out.

5. Tyre Mounting

- (1) Tyres of same specifications, ply ratings and tread patterns must be mounted on the same axle. The original tyre differs from the replaced tyre in height not more than 3%.
- (2) Dual tyre rim ventilating holes should be in alignment with each other. Tyre valves should be positioned at 180° to each other. Dual spacing should be more than 20mm under static load.
- (3) Tyre toe-in should be adjusted to a standard value.
- (4) When the old tube is used, its outer circumference should not be over 92% of the inner circumference of the tyre. It is recommended that the old tube with more than 2 repair patches should not remain in use.
- (5) The rim should be tightly and evenly bolted into position.
- (6) As to tyres of directional tread patterns, the direction marked on sidewalls should be identical to the direction of vehicle travel.

Warning:

Tyres of different specifications, ply ratings and tread patterns mounted on the same axle will deteriorate comprehensive tyre performances. Smaller dual spacing will cause easy heat build up due to the friction between two tyres and cause premature tyre failure. The tyre toe-in poorly adjusted will cause vehicle's poor directivity, tyre side slip, severe tread wear and increased fuel cost. Too big circumference of the old tube will cause the tube folded inside the tyre and tyre blow out.

6. Pre-ride of Tyres

When new tyres have been mounted, the pre-ride should be taken below 50km/h for 200km for normal tyres. Through the pre-ride new tyres will adapt to deformation, remove the stress caused during manufacturing, decrease heat build up and extend tyre performance life.

7. Others

- (1) Quick start up, urgent braking, sharp turning, striking by sharp obstacles, contacts with corrosives and oil contaminants, operation in high temperature, etc. will cause premature tyre failures.
- (2) Tyres should be well maintained and regularly shifted. The sharp obstacles punctured into tyres or the stones clogged in tread channels should be removed immediately.
- (3) When the tyre tread has worn out to the extent specified, stop using it.
- (4) If there is any problem regarding tyre quality, please do not hesitate to contact the tyre dealers or us to enable solving the problems immediately.