



Product Catalogue

Off-The-Road Tires

Dump Truck



Loader



Crane



Mining Equipment



Lifting Equipment



Particular Application



Dump Truck

4 – 23

Loader

24 – 47

Crane

48 – 55

Mining Equipment

56 – 65

Rigid Dump Truck _____ 6

Articulated Dump Truck _____ 18

Motor Wheel Loader _____ 26

Wheel Dozer _____ 36

Grader _____ 44

Mobile Crane _____ 50

Underground Equipment _____ 58

Scraper _____ 64

Lifting Equipment

66 – 79

Straddle Carrier _____	68
Container Fork Lift _____	72
Reach Stacker _____	76

Particular Application

80 – 84

Sand Vehicle _____	82
Compactor _____	84

Legend _____

85

Application Chart _____

91



Dump Truck



Rigid Dump Truck

Radial ____ 6 – 11
Bias ____ 12 – 17



Articulated Dump Truck

Radial __ 18 – 23



Rigid Dump Truck – Radial



TL569

TB516S

TB526

Tire Size Designation	Pattern	Star Rating	Ind Code	Rim Width & Flange	Min. Dual Spacing		Approximate Inflated Dimensions				Loaded Dimensions		Tread Depth		Performance Capability (TKPH)			Type	
							Overall Width		Overall Diameter		Static Load Rad								
							in	mm	in	mm	in	mm	in	mm	32nds	mm	T1	T2	T3
13.00R25(10.00 Bead)	TL569	***	E-3	10.00/2.0 8.50/2.0	16.7	424	13.8	350	51.2	1300			31.5	25.0					TT
13.00R25(8.50 Bead)	TL569	***	E-3	10.00/1.5 8.50/1.3	16.7	424	13.8	350	51.2	1300			31.5	25.0					TT
14.00R24	TB516S	*	E-4	10.00W	17.7	450	14.8	375	55.8	1418			45.4	36.0					TL
	TB516S	**	E-4	10.00W	17.7	450	14.8	375	55.8	1418			45.4	36.0					TL
	TB516S	***	E-4	10.00W	17.7	450	14.8	375	55.8	1418			45.4	36.0	85	105	130		TL
	TL569	***RF	E-3	10.00W	17.7	450	14.8	375	53.9	1368			32.8	26.0					TT
14.00R25	TL569	***RF	E-3	10.00/2.0	17.7	450	14.8	375	53.9	1368	24.7	628	32.8	26.0					TT/TL
	TB526	***RF	E-3	10.00/2.0	17.7	450	14.8	375	53.9	1368	24.4	621	32.8	26.0	85	105	130		TT
	TB526	***RF	E-3	10.00/2.0	17.7	450	14.8	375	53.9	1368	24.4	621	32.8	26.0	85	105	130		TL
	TB516S	*	E-4	10.00/1.5	17.7	450	14.8	375	55.8	1418			45.4	36.0					TL
	TB516S	**	E-4	10.00/1.5	17.7	450	14.8	375	55.8	1418			45.4	36.0					TL
	TB516S	***	E-4	10.00/1.5	17.7	450	14.8	375	55.8	1418			45.4	36.0	85	105	130		TL
18.00R25	TB516S	**	E-4	13.00/2.5	23.1	587	19.6	498	65.9	1673	29.4	746	56.7	45.0	150	190	240		TL
	TB516S	***	E-4	13.00/2.5	23.1	587	19.6	498	65.9	1673	29.4	746	56.7	45.0					TL

Note: Several types of tread compounds. Type T1: Low speed, highly resistance to abrasion and cutting. Type T2: A compromise between resistance to abrasion and cutting. Type T3: Engineered to cope with high speed travel on long hauls. For which tread compound to use, the customer can contact the Radial OTR technical department of Triangle Group.

10 KM/H (5 MPH)								50 KM/H (30 MPH)								
13.00R25	950								450	475	500	525	550	575	600	KPa
	138								65	69	73	76	80	83	87	PSI
	8500***								3350	3550*	3650	3750	3875	4125	4250	KG
	18740***								7400	7850*	8050	8250	8550	9100	9350	LBS
									625	650	675	700	700			KPa
								91	94	98	102	102			PSI	
								4375	4500	4625	4750**	4875***			KG	
								9650	9900	10200	10500**	10750***			LBS	
14.00R24									450	475	500	525	550	575	600	KPa
									65	69	73	76	80	83	87	PSI
									4000	4125*	4375	4500	4625	4750	5000	KG
									8800	9100*	9650	9900	10200	10500	11000	LBS
									625	650	675	700	700	800		KPa
								91	94	98	102	102	116		PSI	
								5150	5300	5450	5600**	5800***	6150***RF		KG	
								11400	11700	12000	12300**	12760**	13600***RF		LBS	
14.00R25	900								450	475	500	525	550	575	600	KPa
	131								65	69	73	76	80	83	87	PSI
	10000***RF								4000	4125*	4375	4500	4625	4750	5000	KG
	22000***RF								8800	9100*	9650	9900	10200	10500	11000	LBS
									625	650	675	700	700	800		KPa
								91	94	98	102	102	116		PSI	
								5150	5300	5450	5600**	5800***	6150***RF		KG	
								11400	11700	12000	12300**	12760***	13600***RF		LBS	
18.00R25	525	550	575	600	625	650	675	700	450	475	500	525	550	575	600	KPa
	76	80	83	87	91	94	98	102	65	69	73	76	80	83	87	PSI
	11200	11800*	12150	12500	12850	13200	13600	14000	6700	7100*	7300	7500	7750	8000	8250	KG
	24700	26000*	26800	27600	28300	29100	30000	30900	14800	15700*	16100	16500	17100	17600	18200	LBS
	725	750	775	800	825	850	875	900	625	650	675	700				KPa
105	109	112	116	120	123	127	131	91	94	98	102				PSI	
14500	15000	15000	15500	16000**	16350	16750	17100***	8500	8750	9000	9250**				KG	
32000	33100	33100	34200	35300**	36000	36900	37700***	18700	19300	19800	20400**				LBS	



Rigid Dump Truck – Radial



TB566S

TB526S

Tire Size Designation	Pattern	Star Rating	Ind Code	Rim Width & Flange	Min. Dual Spacing		Approximate Inflated Dimensions				Loaded Dimensions		Tread Depth		Performance Capability (TKPH)			Type	
							Overall Width		Overall Diameter		Static Load Rad								
							in	mm	in	mm	in	mm	in	mm	32nds	mm	T1	T2	T3
18.00R33	TB566S	**	E-4	13.00/2.5	23.1	587	19.6	498	73.9	1877	34.1	865	66.8	53.0				TL	
	TB526S	**	E-4	13.00/2.5	23.1	587	19.6	498	73.9	1877	33.1	841	64.3	51.0	160	190	270	TL	
21.00R33	TB526S	**	E-4	15.00/3.0	27.6	701	22.5	571	78.8	2001	36.0	914	65.5	52.0	190	230	300	TL	
21.00R35	TB526S	**	E-4	15.00/3.0	27.6	701	22.5	572	80.8	2052			75.6	60.0	230	280	365	TL	
24.00R35	TB526S	**	E-4	17.00/3.5	31.3	795	25.7	653	85.6	2175			81.9	65.0	280	350	390	TL	

Note: Several types of tread compounds. Type T1: Low speed, highly resistance to abrasion and cutting. Type T2: A compromise between resistance to abrasion and cutting. Type T3: Engineered to cope with high speed travel on long hauls. For which tread compound to use, the customer can contact the Radial OTR technical department of Triangle Group.

10 KM/H (5 MPH)								50 KM/H (30 MPH)								
18.00R33	525	550	575	600	625	650	675	700	450	475	500	525	550	575	600	KPa
	76	80	83	87	91	94	98	102	65	69	73	76	80	83	87	PSI
	13200	13600*	14000	14500	15000	15500	16000	16500	7750	8000*	8500	8750	9000	9250	9750	KG
	29100	30000*	30900	32000	33100	34200	35300	36400	17100	17600*	18700	19300	19800	20400	21500	LBS
	725	750	775	800	825				625	650	675	700				KPa
	105	109	112	116	120				91	94	98	102				PSI
16500	17000	17500	18000	18500**				10000	10300	10600	10900**				KG	
36400	37500	38600	39700	40800**				22000	22700	23400	24000**				LBS	
21.00R33	525	550	575	600	625	650	675	700	450	475	500	525	550	575	600	KPa
	76	80	83	87	91	94	98	102	65	69	73	76	80	83	87	PSI
	17000	17500*	18000	18500	19000	19500	20000	20600	10000	10300*	10900	11200	11500	11800	12500	KG
	37500	38600	39700	40800	41900	43000	44100	45400	22000	22700*	24000	24700	25400	26000	27600	LBS
	725	750	775	800	825				625	650	675	700				KPa
	105	109	112	116	120				91	94	98	102				PSI
21200	21800	22400	23000	23600**				12850	13200	13600	14000**				KG	
46700	48100	49400	50700	52000**				28300	29100	30000	30900**				LBS	
21.00R35	525	550	575	600	625	650	675	700	450	475	500	525	550	575	600	KPa
	76	80	83	87	91	94	98	102	65	69	73	76	80	83	87	PSI
	17000	18000*	18500	19000	19500	20000	20600	21200	10300	10600*	11200	11500	11800	11800	12850	KG
	37500	39700*	40800	41900	43000	44100	45400	46700	22700	23400*	24700	25400	26000	26000	28300	LBS
	725	750	775	800	825				625	650	675	700				KPa
	105	109	112	116	120				91	94	98	102				PSI
21800	22400	23000	23600	24300**				13200	13600	14000	14500**				KG	
48100	49400	50700	52000	53600**				29100	30000	30900	32000**				LBS	
24.00R35	525	550	575	600	625	650	675	700	450	475	500	525	550	575	600	KPa
	76	80	83	87	91	94	98	102	65	69	73	76	80	83	87	PSI
	21800	23000*	24300	25000	25750	26500	27250	28000	13200	13600*	14000	14500	15500	16000	16500	KG
	48100	50700*	53600	55100	56800	58400	60000	61500	29100	30000*	30900	32000	34200	35300	36400	LBS
	725	750	775	800	825				625	650	675	700				KPa
	105	109	112	116	120				91	94	98	102				PSI
29000	29000	30000	30000	37500**				17000	17500	18000	18500**				KG	
64000	64000	66000	66000	68000**				37500	38600	39700	40800**				LBS	



Rigid Dump Truck – Radial



TB526S

TL588

TB599

Tire Size Designation	Pattern	Star Rating	Ind Code	Rim Width & Flange	Design Dimensions				Tread Depth		Performance Capability (TKPH)					Type	
					Overall Width		Overall Diameter		32nds	mm	T1	T2A	T2B	T2C	T3	TT	TL
					in	mm	in	mm									
27.00R49	TB526S	**	E-4	19.50/4.0	29.00	737	106.36	2702	93.0	74.0	369.0	380	435.0	480.0	651	TL	
33.00R51	TL588	**	E-4	24.00/5.0	35.20	894	120.50	3061	105.0	83.0	380.0	415	520.0	575.0	695	TL	
37.00R57	TB599	**	E-4	27.00/6.0	40.00	1016	135.35	3438	126.0	100.0	550.0	594	633.0	713.0	880	TL	
40.00R57	TB599	**	E-4	29.00/6.0	43.20	1097	141.48	3594	126.0	100.0	635.0	686	730.0	806.0	1016	TL	
46/90R57	TB599	**	E-4	29.00/6.0	46.00	1168	141.48	3594	126.0	100.0	750.0	810	863.0	953.0	1200	TL	
53/80R63	TB599A	**	E-4	36.00/5.0	53.00	1346	148.80	3780	126.0	100	817.0	882	939.0	1037.0	1307	TL	

Note: Compound & Application

Compound Code	Compound Description	Application Characteristics
T1	Abrasion resistant	Slow speed, highest wear, hot running
T2A	Hybrid A	Medium speed, higher wear, medium heat
T2B	Standard	Normal speed, medium wear, average heat
T2C	Hybrid C	Higher speed, fast wear, cool running
T3	Heat Resistant	Highest speed, faster wear, coolest running

Operation job TKPH must not exceed rated TKPH of each compound.

50 KM/H (30 MPH)

27.00R49	450	475	500	525	550	575	600	625	650	675	700							KPa
	65	69	73	76	80	83	87	91	94	98	102							PSI
	19500	20000*	20600	21800	22400	23000	23600	25000	25750	26500	27250**							KG
	43000	44100*	45400	48100	49400	50700	52000	55100	56800	58400	60000**							LBS
33.00R51	450	475	500	525	550	575	600	625	650	675	700							KPa
	65	69	73	76	80	83	87	91	94	98	102							PSI
	27250	29000*	30000	30750	32500	33500	34500	35500	36500	37500	38750**							KG
	60000	64000*	66000	68000	71500	74000	76000	78500	80500	82500	85500**							LBS
36.00R51	450	475	500	525	550	575	600	625	650	675	700							KPa
	65	69	73	76	80	83	87	91	94	98	102							PSI
	33500	35500*	36500	37500	38750	40000	41250	42500	43750	45000	46250**							KG
	74000	78500*	80500	82500	85500	88000	91000	93500	96500	99000	102000**							LBS
37.00R57	450	475	500	525	550	575	600	625	650	675	700							KPa
	65	69	73	76	80	83	87	91	94	98	102							PSI
	37500	38750*	40000	41250	43750	45000	46250	47500	48750	50000	51500**							KG
	82500	85500*	88000	91000	96500	99000	102000	104500	107500	110000	113500**							LBS
40.00R57	450	475	500	525	550	575	600	625	650	675	700							KPa
	65	69	73	76	80	83	87	91	94	98	102							PSI
	42500	45000*	46250	48750	50000	51500	53000	54500	56000	58000	60000**							KG
	93500	99000*	102000	107500	110000	113500	117000	120000	123500	128000	132500**							LBS
46/90R57	450	475	500	525	550	575	600	625	650	675	700							KPa
	65	69	73	76	80	83	87	91	94	98	102							PSI
	46250	47500*	50000	51500	53000	54500	56000	58000	60000	61500	63000**							KG
	102000	104500*	110000	113500	117000	120000	123500	128000	132500	135500	139000**							LBS
53/80R63	450	475	500	525	550	575	600											KPa
	65	69	73	76	80	83	87											PSI
	67000	69000	71000	75000	77500	80000	82500											KG
	147500	152000	156500	165500	171000	176500	182000											LBS



Rigid Dump Truck – Bias



TL612

TL558

Tire Size Designation	Pattern	Ply Rating	Ind Code	Rim Width & Flange	Min. Dual Spacing		Approximate Inflated Dimensions				Loaded Dimensions		Tread Depth		Performance Capability (TKPH)			Type	
							Overall Width		Overall Diameter		Static Load Rad								
							in	mm	in	mm	in	mm	in	mm	32nds	mm	T1	T2	T3
13.00-25	TL558	28PR	E-3	10.00/1.5	16.7	425	13.8	350	51.2	1300			30.8	24.5				TT	
14.00-24	TL612	16, 24PR	E-3/L-3	10.00VA(SDC)	17.7	450	14.8	375	53.9	1370			37.8	30.0				TT	
	TL558	24, 28PR	E-3	10	17.7	450	14.8	375	53.9	1370			37.8	30.0				TT	
14.00-25	TL558	28PR	E-3	10.00/2.0	17.7	450	14.8	375	53.9	1370			31.5	25.0				TT	

10 KM/H (5 MPH)								50 KM/H (30 MPH)									
14.00-24	475	500	525	550	575	600	625	650	275	300	325	350	375	400	425	KPa	
	69	73	76	80	83	87	91	93	40	44	47	51	54	58	62	PSI	
	6700	6900	7100	7300(16)	7500	7750	8000	8250	3350	3550	3750	3875	4000	4250	4375	KG	
	14800	15200	15700	16100(16)	16500	17100	17600	18200	7400	7850	8250	8550	8800	9350	9650	LBS	
	675	700	725	750	775	800	825	850	450	475	500	525	550	575	600	KPa	
	98	102	105	109	112	116	119	123	65	69	73	76	80	83	87	PSI	
	8250	8500(20)	8750	9000	9000	9000	9500	9500(24)	4500	4625	4750	4875	5000	5150(24)	5350	KG	
	18200	18700(20)	13600	19800	19800	19800	20900	20900(24)	9900	10200	10500	10700	11000	11300(24)	11800	LBS	
875	900	925						625	650						KPa		
126	130	133						91	93						PSI		
9750	9750	10000(28)						5350	5600(28)						KG		
21400	21400	22000(28)						11800	12300(28)						LBS		
14.00-25	475	500	525	550	575	600	625	650	275	300	325	350	375	400	425	KPa	
	69	73	76	80	83	87	91	93	40	44	47	51	54	58	62	PSI	
	6700	6900	7100	7300	7500	7750	8000	8250	3350	3550	3750	3875	4000	4250	4375	KG	
	14800	15200	15700	16100	16500	17100	17600	18200	7400	7850	8250	8550	8800	9350	9650	LBS	
	675	700	725	750	775	800	825	850	450	475	500	525	550	575	600	KPa	
	98	102	105	109	112	116	119	123	65	69	73	76	80	83	87	PSI	
	8250	8500	8750	9000	9000	9000	9500	9500	4500	4625	4750	4875	5000	5150(24)	5350	KG	
	18200	18700	13600	19800	19800	19800	20900	20900	9900	10200	10500	10700	11000	11300(24)	11800	LBS	
875	900	925	1200					625	650	850					KPa		
126	130	133	174					91	93	123					PSI		
9750	9750	10000(28)	11500(36)					5350	5600(28)	6500(36)					KG		
21400	21400	22000(28)	25300(36)					11800	12300(28)	14300(36)					LBS		
13.00-25	15 KM/H (8 MPH)								45 KM/H (25 MPH)								
	740								740							KPa	
	107								107							PSI	
	5770								5010							KG	
12530(28)								11270(28)							LBS		



Rigid Dump Truck – Bias

Rigid Dump Truck



TL612

Tire Size Designation	Pattern	Ply Rating	Ind Code	Rim Width & Flange	Min. Dual Spacing		Approximate Inflated Dimensions				Loaded Dimensions		Tread Depth		Performance Capability (TKPH)			Type	
							Overall Width		Overall Diameter		Static Load Rad								
							in	mm	in	mm	in	mm	in	mm	32nds	mm	T1	T2	T3
16.00-25	TL612	28PR	E-3/L-3	11.25/2.0	20.2	513	16.9	430	58.9	1495			37.8	30.0				TT/TL	
18.00-25	TL612	28, 32, 40PR	E-3/L-3	13.00/2.5	23.1	587	19.7	500	63.6	1615			40.3	32.0				TT/TL	

Atriciulated Dump Truck

10 KM/H (5 MPH)								50 KM/H (30 MPH)								
16.00-25	475	500	525	550	575	600	625	650	275	300	325	350	375	400	425	KPa
	69	73	76	80	83	87	91	93	40	44	47	51	54	58	62	PSI
	8750	9000	9500	9750	10000	10000	10300	10300	4375	4625	4875	5000	5300	5450	5600	KG
	19300	19800	20900	21500	20000	20000	22700	23400	9650	10200	10700	11000	11700	12000	12300	LBS
	675	700	725	750					450	475	500	525	550	575		KPa
	98	102	105	109					65	69	73	76	80	83		PSI
10900	11200	11200	11500(28)					5800	6000	6300	6500	6500	6700(28)		KG	
24000	24700	24700	25400(28)					12800	13200	13900	14300	14300	14800(28)		LBS	
18.00-25	475		525	550	575	600	625	650	275	300	325	350	375	400	425	KPa
	69		76	80	83	87	91	93	40	44	47	51	54	58	62	PSI
	11500	11800	12150	12500	12850	13200	13600	13600(28)	5600	6000	6300	6500	6900	7100	7300	KG
	25400	26000	26800	27600	28300	29100	30000	30000(28)	12300	13200	13900	14300	15200	15700	16100	LBS
	875	900	925	950	875	900	925	950	450	475	500	525	550	575	600	KPa
	126	130	133	137	126	130	133	137	65	69	73	76	80	83	87	PSI
	16000	16500	17000	17000(40)	16000	16500	17000	17000(40)	7500	7750	8000(28)	8250	8500	8750(32)	9000	KG
	35200	36300	374000	374000(40)	35200	36300	374000	374000(40)	16500	17100	17600(28)	18200	18700	19300(32)	19800	LBS
875	900	925	950					625	650	675	700				KPa	
126	130	133	137					91	93	98	102				PSI	
16000	16500	17000	17000(40)					9250	9250	9500	9750(40)				KG	
35200	36300	374000	374000(40)					20400	20400	20900	21400(40)				LBS	



Rigid Dump Truck – Bias

Rigid Dump Truck



TL510



TL558

Tire Size Designation	Pattern	Ply Rating	Ind Code	Rim Width & Flange	Min. Dual Spacing		Approximate Inflated Dimensions				Loaded Dimensions		Tread Depth		Performance Capability (TKPH)			Type	
							Overall Width		Overall Diameter		Static Load Rad								
							in	mm	in	mm	in	mm	in	mm	32nds	mm	T1	T2	T3
18.00-33	TL510	32PR	E-4	13.00/2.5	23.1	587	19.7	500	71.7	1820			69.3	55.0					TL
21.00-35	TL558	36PR	E-3	15.00/3.0	27.6	701	22.4	570	78.9	2005			56.7	45.0					TL
24.00-35	TL510	42PR	E-3	17.00/3.5	31.3	795	25.8	655	83.7	2125			56.7	45.0					TL
27.00-49	TL510	48RP	E-3	19.50/4.0	35.1	892	28.9	735	106.3	2700			79.4	63.0					TL

Atriciulated Dump Truck

10 KM/H (5 MPH)								50 KM/H (30 MPH)								
18.00-33	475	500	525	550	575	600	625	650	275	300	325	350	375	400	425	KPa
	69	73	76	80	83	87	91	93	40	44	47	51	54	58	62	PSI
	13200	13600	14000	14500	15000	15000	15500	16000	6500	6900	7300	7500	8000	8250	8500	KG
	29100	30000	30900	32000	33100	33100	34200	35300	14300	15200	16100	16500	17600	18200	18700	LBS
	675	700	725	750					450	475	500	525	550	575		KPa
	98	102	105	109					65	69	73	76	80	83		PSI
16500	16500	17000	17500(32)					8750	9000	9250	9750	10000	10300(32)		KG	
36400	36400	37500	38600(32)					19300	19800	20400	21500	22000	22700(32)		LBS	
21.00-35	475	500	525	550	575	600	625	650	275	300	325	350	375	400	425	KPa
	69	73	76	80	83	87	91	93	40	44	47	51	54	58	62	PSI
	17500	18000	18500	19000	19500	20000	20600	21200(32)	8750	9250	9500	10000	10300	10900	11200	KG
	38600	39700	40800	41900	43000	44100	45400	46700(32)	19300	20400	20900	22000	22700	24000	24700	LBS
	675	700	725	750					450	475	500	525	550			KPa
	98	102	105	109					65	69	73	76	80			PSI
21200	21800	22400	23000(36)					11500	11800	12150(32)	12850	12850(36)			KG	
46700	48100	49400	50700(36)					25400	26000	26800(32)	28300	28300(36)			LBS	
24.00-35	475	500	525	550	575	600	625	650	275	300	325	350	375	400	425	KPa
	69	73	76	80	83	87	91	93	40	44	47	51	54	58	62	PSI
	22400	23000	23600	24300	25000	25750	26500	26500	11200	11800	12150	12850	13200	14000	14500	KG
	49400	50700	52000	53600	55100	56800	58400	58400	24700	26000	26800	28300	29100	30900	32000	LBS
	675	700	725	750					450	475	500	525	575			KPa
	98	102	105	109					65	69	73	76	83			PSI
27250	28000	29000	29000(42)					15000	15500	15500	16000	17000(42)			KG	
60000	61500	64000	64000(42)					33100	34200	34200	35300	37500(42)			LBS	
27.00-49	475	500	525	550	575	600	625	650	275	300	325	350	375	400	425	KPa
	69	73	76	80	83	87	91	93	40	44	47	51	54	58	62	PSI
	32500	33500	34500	35500	36500(36)	37500	38750	40000	16500	17000	18000	19000	19500	20600	21200(36)	KG
	72500	74000	76000	78500	80500(36)	82500	85500	88000	36400	37500	39700	41900	43000	45400	46700(36)	LBS
	675	700	725	750	775				450	475	500	525	550	575		KPa
	98	102	105	109	112				65	69	73	76	80	83		PSI
40000(42)	41250	42500	42500	43750(48)				21800	22400	23000(42)	23600	24300	25000(48)		KG	
88000(42)	91000	93500	93500	96500(48)				48100	49400	50700(42)	52000	53600	55100(48)		LBS	



Articulated Dump Truck – Radial



TB516

Tire Size Designation	Pattern	Star Rating	Ind Code	Rim Width & Flange	Min. Dual Spacing		Approximate Inflated Dimensions				Loaded Dimensions		Tread Depth		Performance Capability (TKPH)			Type	
							Overall Width		Overall Diameter		Static Load Rad								
							in	mm	in	mm	in	mm	in	mm	32nds	mm	T1	T2	T3
17.5R25	TB516	*	E-3	14.00/1.5			17.5	445	53.1	1348	23.6	600	32.8	26.0	85	110	130	TL	
	TB516	**	E-3	14.00/1.5			17.5	445	53.1	1348	23.6	600	32.8	26.0	110	140	170	TL	
20.5R25	TB516	*	E-3	17.00/2.0			20.5	521	58.8	1493	25.8	656	37.8	30.0				TL	
	TB516	**	E-3	17.00/2.0			20.5	521	58.8	1493	25.8	656	37.8	30.0	120	150	190	TL	

Note: Several types of tread compounds. Type T1: Low speed, highly resistance to abrasion and cutting. Type T2: A compromise between resistance to abrasion and cutting. Type T3: Engineered to cope with high speed travel on long hauls. For which tread compound to use, the customer can contact the Radial OTR technical department of Triangle Group.

		10 KM/H (5 MPH)							40 KM/H (25 MPH)				50 KM/H (30 MPH)								
17.5R25	400	425	450	475	500	525	550	575	125	150	175	200	275	300	325	350	375	400	425	450	KPa
	58	62	65	69	73	76	80	83	18	22	25	29	40	44	47	51	54	58	62	65	PSI
	6000	6150	6500	6700	7100*	7300	7500	7750	1850	2120	2360	2650	3350	3550	3750	4000	4125*	4375	4625	4750	KG
	13200	13600	14300	14800	15700*	16100	16500	17100	4080	4680	5200	5840	7400	7850	8250	8800	9100*	9650	10200	10500	LBS
	600	625	650						225	250	275	300	475	500	525						KPa
	87	91	94						33	36	40	44	69	73	76						PSI
20.5R25	8000	8250	8500**						2900	3075	3350	3650*	5000	5150	5450**						KG
	17600	18200	18700**						6400	6800	7400	8050*	11000	11400	12000**						LBS
	400	425	450	475	500	525	550	575	125	150	175	200	275	300	325	350	375	400	425	450	KPa
	58	62	65	69	73	76	80	83	18	22	25	29	40	44	47	51	54	58	62	65	PSI
	8000	8250	8750	9000	9500*	9750	10000	10300	2430	2800	3150	3450	4375	4750	5000	5300	5600*	5800	6150	6500	KG
	17600	18200	19300	19800	20900*	21500	22000	22700	5360	6150	6950	7600	9650	10500	11000	11700	12300*	12800	13600	14300	LBS
20.5R25	600	625	650						225	250	275	300	475	500	525						KPa
	87	91	94						33	36	40	44	69	73	76						PSI
	10900	11200	11500**						3875	4125	4375	4625*	6700	6900	7300**						KG
	24000	24700	25400**						8550	9100	9650	10200*	14800	15200	16100**						LBS



Articulated Dump Truck – Radial



TB598S

TB516

Tire Size Designation	Pattern	Star Rating	Ind Code	Rim Width & Flange	Min. Dual Spacing		Approximate Inflated Dimensions				Loaded Dimensions		Tread Depth		Performance Capability (TKPH)			Type	
							Overall Width		Overall Diameter		Static Load Rad				T1	T2	T3		
							in	mm	in	mm	in	mm	in	mm	32nds	mm			
23.5R25	TB598S	*	E-4	19.50/2.5			23.5	597	65.9	1673	28.3	720	59.2	47.0				TL	
	TB598S	**	E-4	19.50/2.5			23.5	597	65.9	1673	28.3	720	59.2	47.0	115	135	185	TL	
	TB516	*	E-3	19.50/2.5			23.5	597	63.7	1617	28.3	720	40.3	32.0				TL	
	TB516	**	E-3	19.50/2.5			23.5	597	63.7	1617	28.3	720	40.3	32.0	145	170	230	TL	
	TB596	*	L-2	19.50/2.5			23.5	597	63.7	1617			42.8	34.0				TL	
	TB596	*	E-2	19.50/2.5			23.5	597	63.7	1617			42.8	34.0				TL	
	TB596	**	L-2	19.50/2.5			23.5	597	63.7	1617			42.8	34.0				TL	
	TB596	**	E-2	19.50/2.5			23.5	597	63.7	1617			42.8	34.0				TL	
26.5R25	TB598S	*	E-4	22.00/3.0			26.5	673	70.8	1798	32.0	813	68.0	54.0				TL	
	TB598S	**	E-4	22.00/3.0			26.5	673	70.8	1798	32.0	813	68.0	54.0	125	150	195	TL	
	TB516	*	E-3	22.00/3.0			26.5	673	68.9	1750	30.5	775	44.1	35.0	155	190	240	TL	
	TB516	**	E-3	22.00/3.0			26.5	673	68.9	1750	30.5	775	44.1	35.0	155	190	240	TL	

Note: Several types of tread compounds. Type T1: Low speed, highly resistance to abrasion and cutting. Type T2: A compromise between resistance to abrasion and cutting. Type T3: Engineered to cope with high speed travel on long hauls. For which tread compound to use, the customer can contact the Radial OTR technical department of Triangle Group.

10 KM/H (5 MPH)								50 KM/H (30 MPH)								
23.5R25	400	425	450	475	500	525	550	575	275	300	325	350	375	400	425	KPa
	58	62	65	69	73	76	80	83	40	44	47	51	54	58	62	PSI
	10300	10600	11200	11500	12150*	12500	12850	13200	5600	6000	6500	6700	7100*	7500	7750	KG
	22700	23400	24700	25400	26800*	27600	28300	29100	12300	13200	14300	14800	15700*	16500	17100	LBS
	600	625	650						450	475	500	525				KPa
	87	91	94						65	69	73	76				PSI
13600	14000	14500**						8250	8500	9000	9250**				KG	
30000	30900	32000**						18200	18700	19800	20400**				LBS	
26.5R25	400	425	450	475	500	525	550	575	275	300	325	350	375	400	425	KPa
	58	62	65	69	73	76	80	83	40	44	47	51	54	58	62	PSI
	12850	13200	14000	14500	15000*	15500	16000	16500	7100	7500	8000	8500	9000*	9500	9750	KG
	28300	29100	30900	32000	33100*	34200	35300	36400	15700	16500	17600	18700	19800*	20900	21500	LBS
	600	625	650						450	475	500	525				KPa
	87	91	94						65	69	73	76				PSI
17000	18000	18500**						10300	10600	11200	11500**				KG	
37500	39700	40800**						22700	23400	24700	25400**				LBS	
29.5R25									275	300	325	350	375	400	425	KPa
									40	44	47	51	54	58	62	PSI
									8500	9250	9750	10300	10900*	11500	11800	KG
									18700	20400	21500	22700	24000*	25400	26000	LBS
									450	475	500	525				KPa
									65	69	73	76				PSI
								12500	12850	13600	14000**				KG	
								27600	28300	30000	30900**				LBS	



Articulated Dump Truck – Radial



TB598

Tire Size Designation	Pattern	Star Rating	Ind Code	Rim Width & Flange	Min. Dual Spacing		Approximate Inflated Dimensions				Loaded Dimensions		Tread Depth		Performance Capability (TKPH)			Type	
							Overall Width		Overall Diameter		Static Load Rad								
							in	mm	in	mm	in	mm	in	mm	32nds	mm	T1	T2	T3
29.5R25	TB598S	*	E-4	25.00/3.5			29.5	749	75.6	1921	33.7	856	71.8	57.0				TL	
	TB598S	**	E-4	25.00/3.5			29.5	749	75.6	1921	33.7	856	71.8	57.0	195	235	290	TL	
750/65R25	TB598	**	E-3	24.00/3.0			29.7	754	63.4	1611			52.9	42.0	130	190	248	TL	
775/65R29	TB598	**	E-3	24.00/3.5			30.4	771	68.7	1745			55.4	44.0	195	235	325	TL	
875/65R29	TB598	**	E-3	28.00/3.5			34.2	868	73.5	1868	32.5	825	63.0	50.0	230	285	360	TL	

Note: Several types of tread compounds. Type T1: Low speed, highly resistance to abrasion and cutting. Type T2: A compromise between resistance to abrasion and cutting. Type T3: Engineered to cope with high speed travel on long hauls. For which tread compound to use, the customer can contact the Radial OTR technical department of Triangle Group.

10 KM/H (5 MPH)								50 KM/H (30 MPH)							
750/65R25	400	425	450	475	500	525	550	575	350	375	400	425			KPa
	58	62	65	69	73	76	80	83	51	54	58	62			PSI
	13200	13600	14500	15000*	15500	16000	16500	17000	9250	9750	10000	10600**			KG
	29100	30000	32000	33100*	34200	35300	36400	37500	20400	21500	22700	23400**			LBS
	600	625													KPa
	87	91													PSI
17500	18500**													KG	
38600	40900**													LBS	
775/65R29	400	425	450	475	500	525	550	575	350	375	400	425			KPa
	58	62	65	69	73	76	80	83	51	54	58	62			PSI
	15000	15500	16500	17000*	17500	18500	19000	19500	10900	11500	12150	12850**			KG
	33100	34200	36400	37500*	38600	40800	41900	43000	24000	25400	26800	28300**			LBS
	600	625													KPa
	87	91													PSI
20000	20600**													KG	
44100	45400**													LBS	
875/65R29	400	425	450	475	500	525	550	575	350	375	400	425			KPa
	58	62	65	69	73	76	80	83	51	54	58	62			PSI
	18500	19500	20600	21200*	21800	23000	23600	24300	13200	14000	14500	15500**			KG
	40800	43000	45400	46700*	48100	50700	52000	53600	29100	30900	32000	34200**			LBS
	600	625													KPa
	87	91													PSI
25000	25750**													KG	
55100	56800**													LBS	

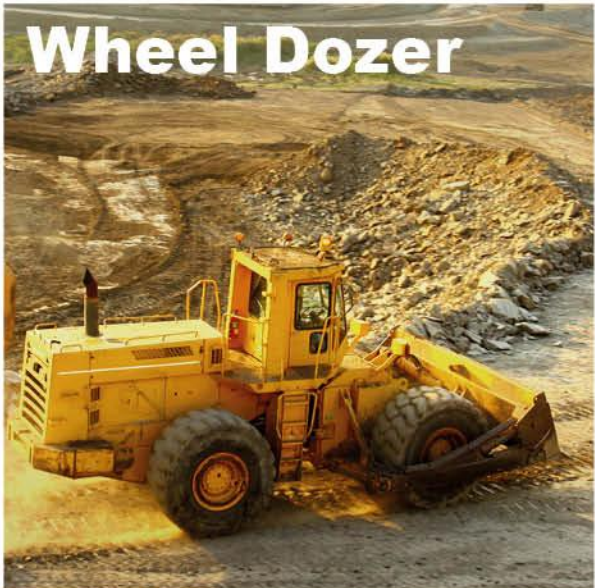


Loader



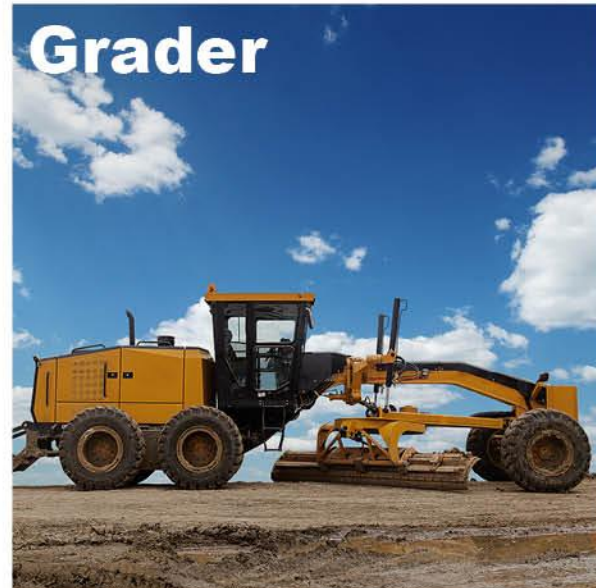
Motor Wheel Loader

Radial __ 26 – 31
Bias ____ 32 – 35



Wheel Dozer

Radial __ 36 – 39
Bias ____ 40 – 43



Grader

Radial __ 44 – 45
Bias ____ 46 – 47



Motor Wheel Loader – Radial



TB596



TB516



TL538S+

Tire Size Designation	Pattern	Star Rating	Ind Code	Rim Width & Flange	Min. Dual Spacing		Approximate Inflated Dimensions				Loaded Dimensions		Tread Depth		Performance Capability (TKPH)			Type	
							Overall Width		Overall Diameter		Static Load Rad								
							in	mm	in	mm	in	mm	in	mm	32nds	mm	T1	T2	T3
14.00R24	TB596	*	L-2	10.00VA			14.8	375	53.9	1368			31.5	25.0					TL
17.5R25	TB516	*	L-3	14.00/1.5			17.5	445	53.1	1348	23.6	600	34.0	27.0					TL
	TB516	**	L-3	14.00/1.5			17.5	445	53.1	1348	23.6	600	34.0	27.0					TL
	TB596	*	L-2	14.00/1.5			17.5	445	53.1	1348			35.3	28.0					TL
	TB596	**	L-2	14.00/1.5			17.5	445	53.1	1348			35.3	28.0					TL
20.5R25	TL538S+	*	L-5	17.00/2.0			20.5	521	61.0	1548	25.8	656	88.2	70.0					TL
	TL538S+	**	L-5	17.00/2.0			20.5	521	61.0	1548	25.8	656	88.2	70.0					TL
	TB516	*	L-3	17.00/2.0			20.5	521	58.8	1493	25.8	656	37.8	30.0					TL
	TB516	**	L-3	17.00/2.0			20.5	521	58.8	1493	25.8	656	37.8	30.0					TL
	TB596	*	L-2	17.00/2.0			20.5	521	58.8	1493			39.1	31.0					TL
	TB596	**	L-2	17.00/2.0			20.5	521	58.8	1493			39.1	31.0					TL

Note: Several types of tread compounds. Type T1: Low speed, highly resistance to abrasion and cutting. Type T2: A compromise between resistance to abrasion and cutting. Type T3: Engineered to cope with high speed travel on long hauls. For which tread compound to use, the customer can contact the Radial OTR technical department of Triangle Group.



Motor Wheel Loader – Radial

**TM518****TL559S+****TL538S+****TL528****TB516-II****TB516****TB598S**

Tire Size Designation	Pattern	Star Rating	Ind Code	Rim Width & Flange	Min. Dual Spacing		Approximate Inflated Dimensions				Loaded Dimensions		Tread Depth		Performance Capability (TKPH)			Type	
							Overall Width		Overall Diameter		Static Load Rad								
							in	mm	in	mm	in	mm	in	mm	32nds	mm	T1	T2	T3
23.5R25	TM518	*	L-2	19.50/2.5			23.5	597	63.7	1617	28.3	720	37.8	30.0					TL
	TM518	**	L-2	19.50/2.5			23.5	597	63.7	1617	28.3	720	37.8	30.0					TL
	TL559S+	**	L-5	19.50/2.5			23.5	597	65.9	1673	29.1	738	103.3	82.0					TL
	TL538S+	*	L-5	19.50/2.5			23.5	597	65.9	1673	28.3	720	97.0	77.0					TL
	TL538S+	**	L-5	19.50/2.5			23.5	597	65.9	1673	28.3	720	97.0	77.0					TL
	TL528	*	L-3	19.50/2.5			23.5	597	63.7	1617	28.3	720	50.4	40.0					TL
	TL528	**	L-3	19.50/2.5			23.5	597	63.7	1617	28.3	720	50.4	40.0					TL
	TB516-II	*	L-3	19.50/2.5			23.5	597	63.7	1617	28.3	720	40.3	32.0					TL
	TB516	*	L-3	19.50/2.5			23.5	597	63.7	1617	28.3	720	40.3	32.0					TL
	TB516	**	L-3	19.50/2.5			23.5	597	63.7	1617	28.3	720	40.3	32.0					TL
	TB598S	*	L-4	19.50/2.5			23.5	597	65.9	1673	28.3	720	59.2	47.0					TL
	TB598S	**	L-4	19.50/2.5			23.5	597	65.9	1673	28.3	720	59.2	47.0					TL
	TB596	*	L-2	19.50/2.5			23.5	597	63.7	1617			42.8	34.0					TL
	TB596	**	L-2	19.50/2.5			23.5	597	63.7	1617			42.8	34.0					TL

26.5R25	TL559S+	**	L-5	22.00/3.0	26.5	673	70.8	1798	29.8	758	113.4	90.0	TL
	TL538S+	*	L-5	22.00/3.0	26.5	673	70.8	1798	29.4	748	108.3	86.0	TL
	TL538S+	**	L-5	22.00/3.0	26.5	673	70.8	1798	29.4	748	108.3	86.0	TL
	TB516	*	L-3	22.00/3.0	26.5	673	68.9	1750	30.5	775	44.1	35.0	TL
	TB516	**	L-3	22.00/3.0	26.5	673	68.9	1750	30.5	775	44.1	35.0	TL
	TB598S	*	L-4	22.00/3.0	26.5	673	70.8	1798			68.0	54.0	TL
	TB598S	**	L-4	22.00/3.0	26.5	673	70.8	1798			68.0	54.0	TL

Note: Several types of tread compounds. Type T1: Low speed, highly resistance to abrasion and cutting. Type T2: A compromise between resistance to abrasion and cutting. Type T3: Engineered to cope with high speed travel on long hauls. For which tread compound to use, the customer can contact the Radial OTR technical department of Triangle Group.

10 KM/H (5 MPH)												
23.5R25	400	425	450	475	500	525	550	575	600	625	650	KPa
	58	62	65	69	73	76	80	83	87	91	94	PSI
	10300	10600	11200	11500	12150*	12500	12850	13200	13600	14000	14500**	KG
	22700	23400	24700	25400	26800*	27600	28300	29100	30000	30900	32000**	LBS
26.5R25	400	425	450	475	500	525	550	575	600	625	650	KPa
	58	62	65	69	73	76	80	83	87	91	94	PSI
	12850	13200	14000	14500	15000*	15500	16000	16500	17000	18000	18500**	KG
	28300	29100	30900	32000	33100*	34200	35300	36400	37500	39700	40800**	LBS



Motor Wheel Loader – Radial



TL559S+



TL538S+



TB516



TB598S



TL535S+

Tire Size Designation	Pattern	Star Rating	Ind Code	Rim Width & Flange	Min. Dual Spacing		Approximate Inflated Dimensions				Loaded Dimensions		Tread Depth		Performance Capability (TKPH)			Type	
							Overall Width		Overall Diameter		Static Load Rad								
							in	mm	in	mm	in	mm	in	mm	32nds	mm	T1	T2	T3
29.5R25	TL559S+	**	L-5	25.00/3.5			29.5	749	75.6	1921	31.8	807	124.7	99.0				TL	
	TL538S+	*	L-5	25.00/3.5			29.5	749	75.6	1921	31.8	807	118.4	94.0				TL	
	TL538S+	**	L-5	25.00/3.5			29.5	749	75.6	1921	31.8	807	118.4	94.0				TL	
	TB516	*	L-3	25.00/3.5			29.5	749	73.8	1874	31.8	807	47.9	38.0				TL	
	TB516	**	L-3	25.00/3.5			29.5	749	73.8	1874	31.8	807	47.9	38.0				TL	
	TB598S	*	L-4	25.00/3.5			29.5	749	75.6	1921			71.8	57.0				TL	
	TB598S	**	L-4	25.00/3.5			29.5	749	75.6	1921			71.8	57.0				TL	
35/65R33	TL535S+	*	L-5	28.00/3.5			35.0	889	81.8	2077			119.7	95.0				TL	
	TL535S+	**	L-5	28.00/3.5			35.0	889	81.8	2077			119.7	95.0				TL	

Note: Several types of tread compounds. Type T1: Low speed, highly resistance to abrasion and cutting. Type T2: A compromise between resistance to abrasion and cutting. Type T3: Engineered to cope with high speed travel on long hauls. For which tread compound to use, the customer can contact the Radial OTR technical department of Triangle Group.

10 KM/H (5 MPH)

29.5R25	400	425	450	475	500	525	550	575	600	625	650					KPa
	58	62	65	69	73	76	80	83	87	91	94					PSI
	15500	16000	17000	17500	18000*	19000	19500	20000	20600	21200	22400**					KG
	34200	35300	37500	38600	39700*	41900	43000	44100	45400	46700	49400**					LBS
35/65R33	450	475	500	525	550	575	600	625	650							KPa
	65	69	73	76	80	83	87	91	94							PSI
	21200	22400	23000*	23600	25000	25750	26500	27250	28000**							KG
	46700	49400	50700*	52000	55100	56800	58400	60000	61500**							LBS



Motor Wheel Loader – Bias



TL612

TL516

Tire Size Designation	Pattern	Ply Rating	Ind Code	Rim Width & Flange	Min. Dual Spacing		Approximate Inflated Dimensions				Loaded Dimensions		Tread Depth		Performance Capability (TKPH)			Type	
							Overall Width		Overall Diameter		Static Load Rad								
							in	mm	in	mm	in	mm	in	mm	32nds	mm	T1	T2	T3
17.5-25	TL612	12, 16PR	E-3/L-3	14.00/1.5			17.5	445	53.1	1350			32.1	26.0				TT	
	TL612	12, 16PR	E-3/L-3	14.00/1.5			17.5	445	53.1	1350			32.8	25.5				TL	
	TL516	12, 16PR	L-3	14.00/1.5			17.5	445	53.1	1350			32.8	26.0				TT	
20.5-25	TL612	16, 20PR	E-3/L-3	17.00/2.0			20.5	520	58.7	1490			35.9	28.5				TL	
	TL612	16, 20PR	E-3/L-3	17.00/2.0			20.5	520	58.7	1490			36.5	29.0				TT	
23.5-25	TL612	16, 18, 20RP	E-3/L-3	19.50/2.5			23.4	595	63.6	1615			39.7	31.5				TL	
	TL612	16, 18, 20RP	E-3/L-3	19.50/2.5			23.4	595	63.6	1615			40.3	32.0				TT	
	TL516	16, 20PR	L-3	19.50/2.5			23.5	595	63.6	1615			40.3	32.0				TT	

10 KM/H (5 MPH)								50 KM/H (30 MPH)							
17.5-25	275	300	325	350	375	400	425	450	225	250	275	300			KPa
	40	44	47	51	54	58	62	65	33	36	40	44			PSI
	5300	9500(16)	5800	10050(18)	10900(20)	6700	6900	7100	3650(12)	3875	4125	4250(16)			KG
	11700	20900(16)	12800	22110(18)	24000(20)	14800	15200	15700	8050(12)	8550	9100	9350(16)			LBS
	475														KPa
	69														PSI
7300(16)														KG	
16100(16)														LBS	
20.5-25	275	300	325	350	375	400	425	450	225	250	275	300	325		KPa
	40	44	47	51	54	58	62	65	33	36	40	44	47		PSI
	7100	7500	7750	8250(16)	8500	8750	9250	9500(20)	4875	5150	5450(16)	5800	6000(20)		KG
	15700	16500	17100	18200(16)	18700	19300	20400	20900(20)	10700	11400	12000(16)	12800	13200(20)		LBS
	475	500	525												KPa
	69	73	76												PSI
9750	10000	10300												KG	
21500	22000	22700												LBS	
23.5-25	275	300	325	350	375	400	425	450	225	250	275	300	325		KPa
	40	44	47	51	54	58	62	65	33	36	40	44	47		PSI
	9000	9500(16)	10000	10050(18)	10900(20)	11200	11800	12150	6150(16)	6500	6700(18)	7300(20)	7750		KG
	19800	20900(16)	22000	22110(18)	24000(20)	24700	26000	26800	13600(16)	14300	14800(18)	16100(20)	17100		LBS



Motor Wheel Loader – Bias



TL612

TL520

Tire Size Designation	Pattern	Ply Rating	Ind Code	Rim Width & Flange	Min. Dual Spacing		Approximate Inflated Dimensions				Loaded Dimensions		Tread Depth		Performance Capability (TKPH)			Type	
							Overall Width		Overall Diameter		Static Load Rad								
							in	mm	in	mm	in	mm	in	mm	32nds	mm	T1	T2	T3
26.5-25	TL612	20, 28PR	L-4	22.00/3.0			26.6	675	70.9	1800			68.0	54.0				TL	
	TL612	20, 28PR	E-3/L-3	22.00/3.0			26.6	675	68.9	1750			44.1	35.0				TL	
29.5-25	TL612	22, 28PR	E-3/L-3	25.00/3.5			29.5	750	73.8	1875			54.2	43.0				TL	
29.5-29	TL612	28PR	E-3/L-3	25.00/3.5			29.5	750	77.8	1975			54.2	43.0				TL	
35/65-33	TL520	42PR	L-5	28.00/3.5			35.0	890	81.7	2075			122.2	97.0				TL	
45/65-45	TL520	46, 58PR	L-5	36.00/4.5			44.9	1140	107.7	2735			146.1	116.0				TL	

10 KM/H (5 MPH)								50 KM/H (30 MPH)							
26.5-25	275	300	325	350	375	400	425	450	225	250	275	300	325	350	KPa
	40	44	47	51	54	58	62	65	33	36	40	44	47	51	PSI
	11500	12150	12500	13200(20)	13600	14000	14500	15000	7750	8250(20)	8750	9250	9500	10000(28)	KG
	25400	26800	27600	29100(20)	30000	30900	32000	33100	17100	18200(20)	19300	20400	20900	22000(28)	LBS
	475	500	525	550											KPa
	69	73	76	80											PSI
15500(28)	16000	16500	17000											KG	
34200(28)	35300	36400	37500											LBS	
29.5-25	275	300	325	350	375	400	425	225	250	275	300	325	KPa		
	40	44	47	51	54	58	62	33	36	40	44	47	PSI		
	13600	14500	15000(22)	16000	16500	17000	17500(28)	9250	10000(22)	10600	10900	11500(28)	KG		
	30000	32000	33100(22)	35300	36400	37500	38600(28)	20400	22000(22)	23400	24000	25400(28)	LBS		
29.5-29	275	300	325	350	375	400	425	225	250	275	300	325	KPa		
	40	44	47	51	54	58	62	33	36	40	44	47	PSI		
	14500	15500	16000	17000	17500	18000	19000(28)	10000	10600	11200	11800	12150(28)	KG		
	32000	34200	35300	37500	38600	39700	41900(28)	22000	23400	24700	26000	26800(28)	LBS		

10 KM/H (5 MPH)																
35/65-33	275	300	325	350	375	400	425	450	475	500	525	550	575	600	625	KPa
	40	44	47	51	54	58	62	65	69	73	76	80	83	87	91	PSI
	16500	17000	18000	19000	19500	20000	21200	21800	22400	23000	23600(36)	24400	25000	25800	26500(42)	KG
	36400	37500	39700	41900	43000	44100	46700	48100	49400	50700	52000(36)	53800	55100	56900	58400(42)	LBS
45/65-45	275	300	325	350	375	400	425	450	475	500	525	550	575	600	625	KPa
	40	44	47	51	54	58	62	65	69	73	76	80	83	87	91	PSI
	30000	31500	32500	34500	35500	37500	38750	40000	41250	42500	43750(46)	45000	46250	47500	48750	KG
	66000	69500	71500	76000	78500	82500	85500	88000	91000	93500	96500(46)	99000	102000	104700	107400	LBS
	650	675														KPa
	93	98														PSI
48750	50000(58)														KG	
107400	110200(58)														LBS	



Wheel Dozer – Radial



TB516

TL538S+

Tire Size Designation	Pattern	Star Rating	Ind Code	Rim Width & Flange	Min. Dual Spacing		Approximate Inflated Dimensions				Loaded Dimensions		Tread Depth		Performance Capability (TKPH)			Type	
							Overall Width		Overall Diameter		Static Load Rad								
							in	mm	in	mm	in	mm	in	mm	32nds	mm	T1	T2	T3
17.5R25	TB516	*	L-3	14.00/1.5			17.5	445	53.1	1348	23.6	600	32.8	26.0				TL	
	TB516	**	L-3	14.00/1.5			17.5	445	53.1	1348	23.6	600	32.8	26.0				TL	
20.5R25	TB516	*	L-3	17.00/2.0			20.5	521	58.8	1493	25.8	656	37.8	30.0				TL	
	TB516	**	L-3	17.00/2.0			20.5	521	58.8	1493	25.8	656	37.8	30.0				TL	
	TL538S+	*	L-5	17.00/2.0			20.5	521	61.0	1548	25.8	656	88.2	70.0				TL	
	TL538S+	**	L-5	17.00/2.0			20.5	521	61.0	1548	25.8	656	88.2	70.0				TL	

Note: Several types of tread compounds. Type T1: Low speed, highly resistance to abrasion and cutting. Type T2: A compromise between resistance to abrasion and cutting. Type T3: Engineered to cope with high speed travel on long hauls. For which tread compound to use, the customer can contact the Radial OTR technical department of Triangle Group.

10 KM/H (5 MPH)

17.5R25	400	425	450	475	500	525	550	575	600	625	650					KPa
	58	62	65	69	73	76	80	83	87	91	94					PSI
	6000	6150	6500	6700	7100*	7300	7500	7750	8000	8250	8500**					KG
	13200	13600	14300	14800	15700*	16100	16500	17100	17600	18200	18700**					LBS
20.5R25	400	425	450	475	500	525	550	575	600	625	650					KPa
	58	62	65	69	73	76	80	83	87	91	94					PSI
	8000	8250	8750	9000	9500*	9750	10000	10300	10900	11200	11500**					KG
	17600	18200	19300	19800	20900*	21500	22000	22700	24000	24700	25400**					LBS



Wheel Dozer – Radial



TB516

TB516-II

TL528

TM518

TL538S+

TL559S+

Tire Size Designation	Pattern	Star Rating	Ind Code	Rim Width & Flange	Min. Dual Spacing		Approximate Inflated Dimensions				Loaded Dimensions		Tread Depth		Performance Capability (TKPH)			Type	
							Overall Width		Overall Diameter		Static Load Rad				T1	T2	T3		
							in	mm	in	mm	in	mm	in	mm	32nds	mm			
23.5R25	TB516	*	L-3	19.50/2.5			23.5	597	63.7	1617	28.3	720	40.3	32.0					TL
	TB516	**	L-3	19.50/2.5			23.5	597	63.7	1617	28.3	720	40.3	32.0					TL
	TB516-II	*	L-3	19.50/2.5			23.5	597	63.7	1617	28.3	720	40.3	32.0					TL
	TL528	*	L-3	19.50/2.5			23.5	597	63.7	1617	28.3	720	50.4	40.0					TL
	TL528	**	L-3	19.50/2.5			23.5	597	63.7	1617	28.3	720	50.4	40.0					TL
	TM518	*	L-2	19.50/2.5			23.5	597	63.7	1617	28.3	720	37.8	30.0					TL
	TM518	**	L-2	19.50/2.5			23.5	597	63.7	1617	28.3	720	37.8	30.0					TL
	TL538S+	*	L-5	19.50/2.5			23.5	597	65.9	1673	28.3	720	97.0	77.0					TL
	TL538S+	**	L-5	19.50/2.5			23.5	597	65.9	1673	28.3	720	97.0	77.0					TL
	TL559S+	**	L-5	19.50/2.5			23.5	597	65.9	1673	29.1	738	103.3	82.0					TL
	TB516	*	L-3	22.00/3.0			26.5	673	68.9	1750	30.5	775	44.1	35.0					TL
	TB516	**	L-3	22.00/3.0			26.5	673	68.9	1750	30.5	775	44.1	35.0					TL

26.5R25	TL538S+	*	L-5	22.00/3.0			26.5	673	70.8	1798	29.4	748	108.3	86.0					TL
	TL538S+	**	L-5	22.00/3.0			26.5	673	70.8	1798	29.4	748	108.3	86.0					TL
	TL559S+	**	L-5	22.00/3.0			26.5	673	70.8	1798	29.8	758	113.4	90.0					TL

Note: Several types of tread compounds. Type T1: Low speed, highly resistance to abrasion and cutting. Type T2: A compromise between resistance to abrasion and cutting. Type T3: Engineered to cope with high speed travel on long hauls. For which tread compound to use, the customer can contact the Radial OTR technical department of Triangle Group.

10 KM/H (5 MPH)																
23.5R25	400	425	450	475	500	525	550	575	600	625	650					KPa
	58	62	65	69	73	76	80	83	87	91	94					PSI
	10300	10600	11200	11500	12150*	12500	12850	13200	13600	14000	14500**					KG
	22700	23400	24700	25400	26800*	27600	28300	29100	30000	30900	32000**					LBS
26.5R25	400	425	450	475	500	525	550	575	600	625	650					KPa
	58	62	65	69	73	76	80	83	87	91	94					PSI
	12850	13200	14000	14500	15000*	15500	16000	16500	17000	18000	18500**					KG
	28300	29100	30900	32000	33100*	34200	35300	36400	37500	39700	40800**					LBS



Wheel Dozer – Bias



TB516

TL538S+

TL559S+

Tire Size Designation	Pattern	Star Rating	Ind Code	Rim Width & Flange	Min. Dual Spacing		Approximate Inflated Dimensions				Loaded Dimensions		Tread Depth		Performance Capability (TKPH)			Type	
							Overall Width		Overall Diameter		Static Load Rad								
							in	mm	in	mm	in	mm	in	mm	32nds	mm	T1	T2	T3
29.5R25	TB516	*	L-3	25.00/3.5			29.5	749	73.8	1874	31.8	807	47.9	38.0				TL	
	TB516	**	L-3	25.00/3.5			29.5	749	73.8	1874	31.8	807	47.9	38.0				TL	
	TL538S+	*	L-5	25.00/3.5			29.5	749	75.6	1921	31.8	807	118.4	94.0				TL	
	TL538S+	**	L-5	25.00/3.5			29.5	749	75.6	1921	31.8	807	118.4	94.0				TL	
	TL559S+	**	L-5	25.00/3.5			29.5	749	75.6	1921	31.8	807	126.0	100.0				TL	

Note: Several types of tread compounds. Type T1: Low speed, highly resistance to abrasion and cutting. Type T2: A compromise between resistance to abrasion and cutting. Type T3: Engineered to cope with high speed travel on long hauls. For which tread compound to use, the customer can contact the Radial OTR technical department of Triangle Group.

10 KM/H (5 MPH)

29.5R25	400	425	450	475	500	525	500	575	600	625	650							KPa
	58	62	65	69	73	76	80	83	87	91	94							PSI
	15500	16000	17000	17500	18000*	19000	19500	20000	20600	21200	22400**							KG
	34200	35300	37500	38600	39700*	41900	43000	44100	45400	46700	49400**							LBS



Wheel Dozer – Bias



TL502



TL508



TL516



TL612

Tire Size Designation	Pattern	Ply Rating	Ind Code	Rim Width & Flange	Min. Dual Spacing		Approximate Inflated Dimensions				Loaded Dimensions		Tread Depth		Performance Capability (TKPH)			Type	
							Overall Width		Overall Diameter		Static Load Rad								
							in	mm	in	mm	in	mm	in	mm	32nds	mm	T1	T2	T3
15.5-25	TL502	12PR	E-3	12.00/1.3			15.6	395	50.2	1275			31.5	25.0				TL	
	TL508	12PR	E-2/L-2	12.00/1.3			15.6	395	50.2	1275			31.5	25.0				TL/TT	
17.5-25	TL508	12, 16PR	E-2/L-2	14.00/1.5			17.5	445	53.1	1350			31.5	25.0				TL	
	TL516	12, 16PR	L-3	14.00/1.5			17.5	445	53.1	1350			32.8	26.0				TT	
	TL612	12, 16PR	E-3/L-3	14.00/1.5			17.5	445	53.1	1350			32.1	26.0				TT	
	TL612	12, 16PR	E-3/L-3	14.00/1.5			17.5	445	53.1	1350			32.8	25.5				TL	

10 KM/H (5 MPH)							50 KM/H (30 MPH)											
15.5-25	275	300	325	350	375	400					225	250						KPa
	40	44	47	51	54	58					33	36						PSI
	4500	4750	4875	5150	5300	5600(12)					3000	3250(12)						KG
	9900	10500	10700	11400	11700	12300(12)					6600	7150(12)						LBS
17.5-25	275	300	325	350	375	400	425	450	475		225	250	275	300				KPa
	40	44	47	51	54	58	62	65	69		33	36	40	44				PSI
	5300	5600	5800	6150(12)	6300	6700	6900	7100	7300(16)		3650(12)	3875	4125	4250(16)				KG
	11700	12300	12800	13600(12)	13900	14800	15200	15700	16100(16)		8050(12)	8550	9100	9350(16)				LBS



Wheel Dozer – Bias



TL508



TL516



TL612

Tire Size Designation	Pattern	Ply Rating	Ind Code	Rim Width & Flange	Min. Dual Spacing		Approximate Inflated Dimensions				Loaded Dimensions		Tread Depth		Performance Capability (TKPH)			Type	
							Overall Width		Overall Diameter		Static Load Rad								
							in	mm	in	mm	in	mm	in	mm	32nds	mm	T1	T2	T3
20.5-25	TL508	12, 16PR	E-2/L-2	17.00/2.0			20.5	520	58.7	1490			35.9	28.5				TL	
	TL612	16, 20PR	E-3/L-3	17.00/2.0			20.5	520	58.7	1490			35.9	28.5				TL	
	TL612	16, 20PR	E-3/L-3	17.00/2.0			20.5	520	58.7	1490			36.5	29.0				TT	
23.5-25	TL508	16PR	E-2/L-2	19.50/2.5			23.4	595	63.6	1615			38.4	30.5				TL/TT	
	TL516	16, 20PR	L-3	19.50/2.5			23.5	595	63.6	1615			40.3	32.0				TT	
	TL612	16, 18, 20PR	E-3/L-3	19.50/2.5			23.4	595	63.6	1615			39.7	31.5				TL	
	TL612	16, 18, 20PR	E-3/L-3	19.50/2.5			23.4	595	63.6	1615			40.3	32.0				TT	
	TL520	20PR	L-5	19.50/2.6			23.4	595	65.9	1675			107.0	85.0				TT	
26.5-25	TL612	20, 28PR	E-3/L-3	22.00/3.0			26.6	675	70.9	1800			68.0	54.0				TL	
	TL612	20, 28PR	E-3/L-3	22.00/3.0			26.6	675	68.9	1750			44.1	35.0				TL	
29.5-25	TL612	22, 28PR	E-3/L-3	25.00/3.5			29.5	750	73.8	1875			54.2	43.0				TL	

10 KM/H (5 MPH)								50 KM/H (30 MPH)								
20.5-25	275	300	325	350	375	400	425	450	225	250	275	300	325			KPa
	40	44	47	51	54	58	62	65	33	36	40	44	47			PSI
	7100	7500	7750	8250(16)	8500	8750	9250	9500(20)	4875	5150	5450(16)	5800	6000(20)			KG
	15700	16500	17100	18200(16)	18700	19300	20400	9500(20)	10700	11400	12000(16)	12800	13200(20)			LBS
	475	500	525													KPa
69	73	76													PSI	
9750	10000	10300													KG	
21500	22000	22700													LBS	
23.5-25	275	300	325	350	375	400	425	450	225	250	275	300	325			KPa
	40	44	47	51	54	58	62	65	33	36	40	44	47			PSI
	9000	9500(16)	10000	10050(18)	10900(20)	11200	11800	12150	6150(16)	6500	6700(18)	7300(20)	7750			KG
19800	9500(16)	22000	22200(18)	24000(20)	24700	26000	26800	13600(16)	14300	14800(18)	16100(20)	17100			LBS	
26.5-25	275	300	325	350	375	400	425	450	225	250	275	300	325	350		KPa
	40	44	47	51	54	58	62	65	33	36	40	44	47	51		PSI
	11500	12150	12500	13200(20)	13600	14000	14500	15000	7750	8250(20)	8750	9250	9500	10000(28)		KG
	25400	26800	27600	29100(20)	30000	30900	32000	33100	17100	8250(20)	19300	20400	20900	22000(28)		LBS
	475	500	525	550	575	600	625									KPa
69	73	76	80	83	87	91									PSI	
15500(28)	16000	16500	17000	17500	18000	18500(36)									KG	
34200(28)	35300	36400	37500	38600	39700	40800(36)									LBS	
29.5-25	275	300	325	350	375	400	425		225	250	275	300	325			KPa
	40	44	47	51	54	58	62		33	36	40	44	47			PSI
	13600	14500	15000(22)	16000	16500	17000	17500(28)		9250	10000(22)	10600	10900	11500(28)			KG
30000	32000	33100(22)	35300	36400	37500	38600(28)		20400	22000(22)	23400	24000	25400(28)			LBS	



Grader – Radial



TB536



TB515



TB596

Tire Size Designation	Pattern	Star Rating	Ind Code	Rim Width & Flange	Min. Dual Spacing		Approximate Inflated Dimensions				Loaded Dimensions		Tread Depth		Performance Capability (TKPH)			Type	
							Overall Width		Overall Diameter		Static Load Rad				T1	T2	T3		
							in	mm	in	mm	in	mm	in	mm	32nds	mm			
14.00R24	TB536	*	G-2	10.00VA	17.7	450	14.8	375	53.9	1368			31.5	25.0				TL	
	TB536	***	E-2	10.00W	17.7	450	14.8	375	53.9	1368			31.5	25.0	110	140	170	TL	
	TB515	*	G-2	10.00VA	17.7	450	14.8	375	53.9	1368			31.5	25.0				TL	
	TB596	*	G-2	10.00VA	17.7	450	14.8	375	53.9	1368			31.5	25.0				TL	
17.5R25	TB515	*	G-2	14.00/1.5			17.5	445	53.1	1348	24.0	610	34.0	27.0				TL	
	TB596	*	G-2	14.00/1.5			17.5	445	53.1	1348			35.3	28.0				TL	
20.5R25	TB515	*	G-2	17.00/2.0			20.5	521	58.8	1493	26.3	669	37.8	30.0				TL	
	TB596	*	G-2	17.00/2.0			20.5	521	58.8	1493			39.1	31.0				TL	
23.5R25	TB596	*	G-2	19.50/2.5			23.5	597	63.7	1617			42.8	34.0				TL	

Note: Several types of tread compounds. Type T1: Low speed, highly resistance to abrasion and cutting. Type T2: A compromise between resistance to abrasion and cutting. Type T3: Engineered to cope with high speed travel on long hauls. For which tread compound to use, the customer can contact the Radial OTR technical department of Triangle Group.

40 KM/H (25 MPH)								50 KM/H (30 MPH)								
14.00R24	200	225	250	275	300	325	350	375	450	475	500	525	550	575	600	KPa
	29	33	36	40	44	47	51	54	65	69	73	76	80	83	87	PSI
	2240	2430	2650	2800	3000	3250	3350	3650*	4000	4125*	4375	4500	4625	4750	5000	KG
	4940	5360	5840	6150	6600	7150	7400	8050*	8800	9100*	9650	9900	10200	10500	11000	LBS
	475	500	525						625	650	675	700	700			KPa
	69	73	76						91	94	98	102	102			PSI
9750	10000	10300						5150	5300	5450	5600**	5800***			KG	
21500	22000	22700						11400	11700	12000	12300**	12760***			LBS	
17.5R25	125	150	175	200	225	250	275	300								KPa
	18	22	25	29	33	36	40	44								PSI
	1850	2120	2360	2650	2900	3075	3350	3650*								KG
	4080	4680	5200	5840	6400	6800	7400	8050*								LBS
20.5R25	125	150	175	200	225	250	275	300								KPa
	18	22	25	29	33	36	40	44								PSI
	2430	2800	3150	3450	3875	4125	4375	4625*								KG
	5360	6150	6950	7600	8550	9100	9650	10200*								LBS



Grader - Bias



TL508

Tire Size Designation	Pattern	Ply Rating	Ind Code	Rim Width & Flange	Min. Dual Spacing		Approximate Inflated Dimensions				Loaded Dimensions		Tread Depth		Performance Capability (TKPH)			Type	
							Overall Width		Overall Diameter		Static Load Rad								
							in	mm	in	mm	in	mm	in	mm	32nds	mm	T1	T2	T3
14.00-24TG	TL508	12PR	E-2/L-2	8.0TG			14.2	360	53.1	1350			31.5	25.0				TL	
15.5-25	TL508	12PR	E-2/L-2	12.00/1.3			15.6	395	50.2	1275			31.5	25.0				TL	
17.5-25	TL508	12, 16PR	E-2/L-2	14.00/1.5			17.5	445	53.1	1350			31.5	25.0				TL	
20.5-25	TL508	12, 16PR	E-2/L-2	17.00/2.0			20.5	520	58.7	1490			35.9	28.5				TL	
23.5-25	TL508	12, 16PR	E-2/L-2	19.50/2.5			23.4	595	63.6	1615			38.4	30.5				TL	

40 KM/H (25 MPH)

14.00-24TG	125	150	175	200	225	250												KPa
	18	22	25	29	33	36												PSI
	2060	2300	2500	2650	2800	3075(12)												KG
	4540	5080	5520	5840	6150	6800(12)												LBS
15.5-25	125	150	175	200	225	250												KPa
	18	22	25	29	33	36												PSI
	1800	1950	2180	2360	2500	2650(12)												KG
	3960	4300	4800	5200	5520	5840(12)												LBS
17.5-25	125	150	175	200	225	250	275											KPa
	18	22	25	29	33	36	40											PSI
	2120	2360	2575	2900(12)	3000	3150	3350(16)											KG
	4680	5200	5680	6400(12)	6600	6950	7400(16)											LBS
20.5-25	125	150	175	200	225													KPa
	18	22	25	29	33													PSI
	2800	3150	3550	3750	4000(16)													KG
	6150	6950	7850	8250	8800(16)													LBS
23.5-25	125	150	175	200	225	250	275	300										KPa
	18	22	25	29	33	36	40	44										PSI
	3150	3550	4000	4500	4875	5300	5600	6000*										KG
	6950	7850	8800	9900	10700	11700	12300	13200*										LBS



Crane



Radial __ 50 – 51

Bias ____ 52 – 55



Mobile Crane – Radial



TB586



TB589

Tire Size Designation	Pattern	Star Rating	Ind Code	Rim Width & Flange	Min. Dual Spacing		Approximate Inflated Dimensions				Loaded Dimensions		Tread Depth		Performance Capability (TKPH)			Type	
							Overall Width		Overall Diameter		Static Load Rad				T1	T2	T3	TT	TL
							in	mm	in	mm	in	mm			in	mm	32nds	mm	
14.00R24 (385/95R24 170E ROAD)	TB586	***	E-2	10.00W	17.7	450	14.8	375	53.9	1368	24.7	627	27.7	22.0	125	160	195	TT	
14.00R25 (385/95R25 170E ROAD)	TB586	***	E-2	10.00/1.5	17.7	450	14.8	375	53.9	1368	24.6	626	27.7	22.0	125	160	195	TL	
		***RF	E-2	10.00/2.0	17.7	450	14.8	375	53.9	1368			27.7	22.0				TT/TL	
16.00R25 (445/95R25 177E ROAD)	TB586	***	E-2	11.25/2.0	20.2	513	17.0	432	58.8	1493	26.9	682	30.2	24.0	165	210	255	TL	
18.00R25 (505/95R25 186E ROAD)	TB589	***	E-2	13.00/2.5	23.1	587	19.6	498	63.7	1617			26.5	21.0	200	240	300	TL	

Note: Several types of tread compounds. Type T1: Low speed, highly resistance to abrasion and cutting. Type T2: A compromise between resistance to abrasion and cutting. Type T3: Engineered to cope with high speed travel on long hauls. For which tread compound to use, the customer can contact the Radial OTR technical department of Triangle Group.

70 KM/H (45 MPH)

14.00R24 (385/95R24 170E ROAD)	725	750	775	800	825	850	875	900										KPa
	105	109	112	116	120	123	127	131										PSI
	5000	5150	5300	5450	5600	5800	5800	6000***										KG
	11000	11400	11700	12000	12300	12800	12800	13200***										LBS
14.00R25 (385/95R25 170E ROAD)	725	750	775	800	825	850	875	900										KPa
	105	109	112	116	120	123	127	131										PSI
	5000	5150	5300	5450	5600	5800	5800	6000***										KG
	11000	11400	11700	12000	12300	12800	12800	13200***										LBS
16.00R25 (445/95R25 177E ROAD)	725	750	775	800	825	850	875	900										KPa
	105	109	112	116	120	123	127	131										PSI
	6150	6300	6500	6700	6900	6900	7100	7300***										KG
	13600	13900	14300	14800	15200	15200	15700	16100***										LBS
18.00R25 (501/95R25 188E ROAD)	725	750	775	800	825	850	875	900										KPa
	105	109	112	116	120	123	127	131										PSI
	8000	8250	8500	8750	8750	9000	9250	9500***										KG
	17600	18200	18700	19300	19300	19800	20400	20900***										LBS



Mobile Crane – Bias



TL558

Tire Size Designation	Pattern	Ply Rating	Ind Code	Rim Width & Flange	Min. Dual Spacing		Approximate Inflated Dimensions				Loaded Dimensions		Tread Depth		Performance Capability (TKPH)			Type	
							Overall Width		Overall Diameter		Static Load Rad								
							in	mm	in	mm	in	mm	in	mm	32nds	mm	T1	T2	T3
14.00-24	TL558	24, 28PR	E-3	10	17.7	450	14.8	375	53.9	1370			37.8	30.0				TT	
14.00-25	TL558	28PR	E-3	10.00/2.0	17.7	450	14.8	375	53.9	1370			31.5	25.0				TT	

10 KM/H (5 MPH)								50 KM/H (30 MPH)								
14.00-24	475	500	525	550	575	600	625	650	275	300	325	350	375	400	425	KPa
	69	73	76	80	83	87	91	93	40	44	47	51	54	58	62	PSI
	6700	6900	7100	7300(16)	7500	7750	8000	8250	3350	3550	3750	3875	4000	4250	4375	KG
	14800	15200	15700	16100(16)	16500	17100	17600	18200	7400	7850	8250	8550	8800	9350	9650	LBS
	675	700	725	750	775	800	825	850	450	475	500	525	550	575	600	KPa
	98	102	105	109	112	116	119	123	65	69	73	76	80	83	87	PSI
	8250	8500(20)	8750	9000	9000	9000	9500	9500(24)	4500	4625	4750	4875	5000	5150(24)	5350	KG
	18200	18700(20)	13600	19800	19800	19800	20900	20900(24)	9900	10200	10500	10700	11000	11300(24)	11800	LBS
875	900	925						625	650						KPa	
126	130	133						91	93						PSI	
9750	9750	10000(28)						5350	5600(28)						KG	
21400	21400	22000(28)						11800	12300(28)						LBS	
14.00-25	475	500	525	550	575	600	625	650	275	300	325	350	375	400	425	KPa
	69	73	76	80	83	87	91	93	40	44	47	51	54	58	62	PSI
	6700	6900	7100	7300	7500	7750	8000	8250	3350	3550	3750	3875	4000	4250	4375	KG
	14800	15200	15700	16100	16500	17100	17600	18200	7400	7850	8250	8550	8800	9350	9650	LBS
	675	700	725	750	775	800	825	850	450	475	500	525	550	575	600	KPa
	98	102	105	109	112	116	119	123	65	69	73	76	80	83	87	PSI
	8250	8500	8750	9000	9000	9000	9500	9500	4500	4625	4750	4875	5000	5150(24)	5350	KG
	18200	18700	13600	19800	19800	19800	20900	20900	9900	10200	10500	10700	11000	11300(24)	11800	LBS
875	900	925	1200					625	650	850					KPa	
126	130	133	174					91	93	123					PSI	
9750	9750	10000(28)	11500(36)					5350	5600(28)	6500(36)					KG	
21400	21400	22000(28)	25300(36)					11800	12300(28)	14300(36)					LBS	



Mobile Crane – Bias



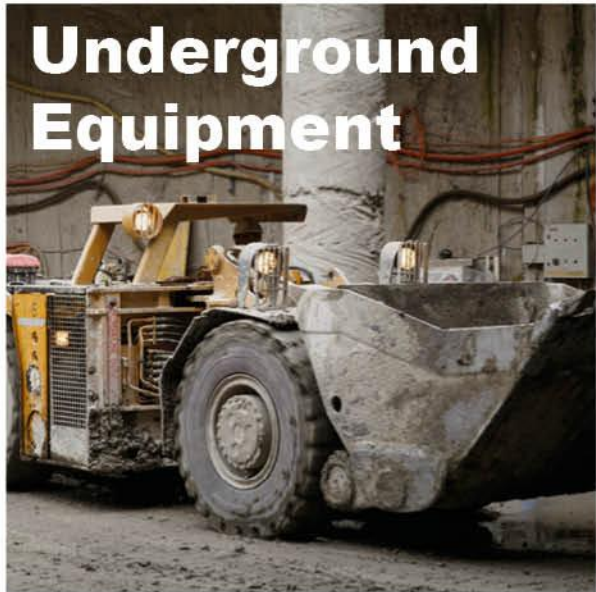
TL612

Tire Size Designation	Pattern	Ply Rating	Ind Code	Rim Width & Flange	Min. Dual Spacing		Approximate Inflated Dimensions				Loaded Dimensions		Tread Depth		Performance Capability (TKPH)			Type	
							Overall Width		Overall Diameter		Static Load Rad								
							in	mm	in	mm	in	mm	in	mm	32nds	mm	T1	T2	T3
16.00-25	TL612	28PR	E-3/L-3	11.25/2.0	20.2	513	16.9	430	58.9	1495			37.8	30.0				TT/TL	
18.00-25	TL612	28, 32, 40PR	E-3/L-3	13.00/2.5	23.1	587	19.7	500	63.6	1615			37.8	30.0				TT/TL	

10 KM/H (5 MPH)								50 KM/H (30 MPH)								
16.00-25	475	500	525	550	575	600	625	650	275	300	325	350	375	400	425	KPa
	69	73	76	80	83	87	91	93	40	44	47	51	54	58	62	PSI
	8750	9000	9500	9750	10000	10000	10300	10300	4375	4625	4875	5000	5300	5450	5600	KG
	19300	19800	20900	21500	20000	20000	22700	23400	9650	10200	10700	11000	11700	12000	12300	LBS
	675	700	725	750					450	475	500	525	550	575		KPa
	98	102	105	109					65	69	73	76	80	83		PSI
10900	11200	11200	11500(28)					5800	6000	6300	6500	6500	6700(28)		KG	
24000	24700	24700	25400(28)					12800	13200	13900	14300	14300	14800(28)		LBS	
18.00-25	475	500	525	550	575	600	625	650	275	300	325	350	375	400	425	KPa
	69	73	76	80	83	87	91	93	40	44	47	51	54	58	62	PSI
	11500	11800	12150	12500	12850	13200	13600	13600(28)	5600	6000	6300	6500	6900	7100	7300	KG
	25400	26000	26800	27600	28300	29100	30000	30000(28)	12300	13200	13900	14300	15200	15700	16100	LBS
	675	700	725	750	775	800	825	850	450	475	500	525	550	575	600	KPa
	98	102	105	109	112	116	119	123	65	69	73	76	80	83	87	PSI
	14000	14500	14500	15000(32)	15000	15500	15500	16000	7500	7750	8000(28)	8250	8500	8750(32)	9000	KG
	30900	32000	32000	33100(32)	33100	34100	34100	35200	16500	17100	17600(28)	18200	18700	19300(32)	19800	LBS
875	900	925	950					625	650	675	700				KPa	
126	130	133	137					91	93	98	102				PSI	
16000	16500	17000	17000(40)					9250	9250	9500	9750(40)				KG	
35200	36300	37400	37400(40)					20400	20400	20900	21400(40)				LBS	



Mining Equipment



Underground Equipment

Radial __ 58 – 61
Bias ____ 62 – 63



Scraper

Radial __ 64 – 65



Underground Equipment – Radial



TSMS



TSMS+



TL538S+

Tire Size Designation	Pattern	Star Rating	Ind Code	Rim Width & Flange	Min. Dual Spacing		Approximate Inflated Dimensions				Loaded Dimensions		Tread Depth		Performance Capability (TKPH)			Type	
							Overall Width		Overall Diameter		Static Load Rad								
							in	mm	in	mm	in	mm	in	mm	32nds	mm	T1	T2	T3
16.00R25	TSMS	*	L-4S	11.25/2.0	20.2	513	17.0	432	61.0	1548	26.0	661	64.3	51.0				TL	
	TSMS	**	L-4S	11.25/2.0	20.2	513	17.0	432	61.0	1548	26.0	661	64.3	51.0				TL	
	TSMS	***	L-4S	11.25/2.0	20.2	513	17.0	432	61.0	1548	26.0	661	64.3	51.0				TL	
18.00R25	TSMS+	*	L-5S	13.00/2.5	23.1	587	19.6	498	65.9	1673			100.8	80.0				TL	
	TSMS+	**	L-5S	13.00/2.5	23.1	587	19.6	498	65.9	1673			100.8	80.0				TL	
20.5R25	TL538S+	*	L-5	17.00/2.0			20.5	521	61.0	1548	25.8	656	88.2	70.0				TL	
	TL538S+	**	L-5	17.00/2.0			20.5	521	61.0	1548	25.8	656	88.2	70.0				TL	

10 KM/H (5 MPH)

16.00R25	525	550	575	600	625	650	675	700	725	750	775	800	825	850	875	KPa
	76	80	83	87	91	94	98	102	105	109	112	116	120	123	127	PSI
	8750	9000*	9250	9750	10000	10300	10600	10900	11200	11500	11800	12150	12150**	12450	12850	KG
	19300	19800*	20400	21500	22000	22700	23400	24000	24700	25400	26000	26800	26800**	27400	28300	LBS
	900															KPa
131																PSI
13250***																KG
29200***																LBS
18.00R25	525	550	575	600	625	650	675	700	725	750	775	800	825	850	875	KPa
	76	80	83	87	91	94	98	102	105	109	112	116	120	123	127	PSI
	11200	11800*	12150	12500	12850	13200	13600	14000	14500	15000	15000	15500	16000**	16350	16750	KG
	24700	26000*	26800	27600		29100	30000	30900	32000	33100	33100	34200	35300**	36000	36900	LBS
	900															
131																PSI
17100***																KG
37700***																LBS
20.5R25	400	425	450	475	500	525	550	575	600	625	650					KPa
	58	62	65	69	73	76	80	83	87	91	94					PSI
	8000	8250	8750	9000	9500*	9750	10000	10300	10900	11200	11500**					KG
	17600	18200	19300	19800	20900*	21500	22000	22700	24000	24700	25400**					LBS



Underground Equipment – Radial



TL538S+

TSMS+

TL559S+

Tire Size Designation	Pattern	Star Rating	Ind Code	Rim Width & Flange	Min. Dual Spacing		Approximate Inflated Dimensions				Loaded Dimensions		Tread Depth		Performance Capability (TKPH)			Type	
							Overall Width		Overall Diameter		Static Load Rad								
							in	mm	in	mm	in	mm	in	mm	32nds	mm	T1	T2	T3
23.5R25	TL538S+	*	L-5	19.50/2.5			23.5	597	65.9	1673	28.3	720	97.0	77.0				TL	
	TL538S+	**	L-5	19.50/2.5			23.5	597	65.9	1673	28.3	720	97.0	77.0				TL	
	TL559S+	**	L-5	19.50/2.5			23.5	597	65.9	1673	29.1	738	103.3	82.0				TL	
26.5R25	TSMS+	*	L-5S	22.00/3.0			26.5	673	70.8	1798			118.4	94.0				TL	
	TSMS+	**	L-5S	22.00/3.0			26.5	673	70.8	1798			118.4	94.0				TL	
	TL538S+	*	L-5	22.00/3.0			26.5	673	70.8	1798	29.4	748	108.3	86.0				TL	
	TL538S+	**	L-5	22.00/3.0			26.5	673	70.8	1798	29.4	748	108.3	86.0				TL	
	TL559S+	**	L-5	22.00/3.0			26.5	673	70.8	1798	29.8	758	113.4	90.0				TL	
29.5R25	TL538S+	*	L-5	25.00/3.5			29.5	749	75.6	1921	31.8	807	118.4	94.0				TL	
	TL538S+	**	L-5	25.00/3.5			29.5	749	75.6	1921	31.8	807	118.4	94.0				TL	
	TL559S+	**	L-5	25.00/3.5			29.5	749	75.6	1921	31.8	807	124.7	99.0				TL	

10 KM/H (5 MPH)

23.5R25	400	425	450	475	500	525	550	575	600	625	650					KPa
	58	62	65	69	73	76	80	83	87	91	94					PSI
	10300	10600	11200	11500	12150*	12500	12850	13200	13600	14000	14500**					KG
	22700	23400	24700	25400	26800*	27600	28300	29100	30000	30900	32000**					LBS
26.5R25	400	425	450	475	500	525	550	575	600	625	650					KPa
	58	62	65	69	73	76	80	83	87	91	94					PSI
	12850	13200	14000	14500	15000*	15500	16000	16500	17000	18000	18500**					KG
	28300	29100	30900	32000	33100*	34200	35300	36400	37500	39700	40800**					LBS
29.5R25	400	425	450	475	500	525	550	575	600	625	650					KPa
	58	62	65	69	73	76	80	83	87	91	94					PSI
	15500	16000	17000	17500	18000*	19000	19500	20000	20600	21200	22400**					KG
	34200	35300	37500	38600	39700*	41900	43000	44100	45400	46700	49400**					LBS



Underground Equipment – Bias



L-5S

Tire Size Designation	Pattern	Ply Rating	Ind Code	Rim Width & Flange	Min. Dual Spacing		Approximate Inflated Dimensions				Loaded Dimensions		Tread Depth		Performance Capability (TKPH)			Type	
							Overall Width		Overall Diameter		Static Load Rad								
					in	mm	in	mm	in	mm	in	mm	32nds	mm	T1	T2	T3	TT	TL
18.00-25	L-5S	40PR	L-5S	13.00/2.5	23.1	587	19.7	500	65.9	1675			98.9	78.5				TL	
26.5-25	L-5S	36PR	L-5S	22.00/3.0			26.6	675	70.9	1800			109.6	87.0				TL	

10 KM/H (5 MPH)

18.00-25	475	500	525	550	575	600	625	650	675	700	725	750	775	800	825	KPa
	69	73	76	80	83	87	91	93	98	102	105	109	112	116	119	PSI
	11500	11800	12150	12500	12850	13200	13600	13600(28)	14000	14500	14500	15000(32)	15000	15500	15500	KG
	25400	26000	26800	27600	28300	29100	30000	30000(28)	30900	32000	32000	33100(32)	33100	34100	34100	LBS
	850	875	900	925	950											KPa
	123	126	130	133	137											PSI
26.5-25	16000	16000	16500	17000	17000(40)											KG
	35200	35200	36300	374000	374000(40)											LBS
	275	300	325	350	375	400	425	450	475	500	525	550	575	600	625	KPa
	40	44	47	51	54	58	62	65	69	73	76	80	83	87	91	PSI
	11500	12150	12500	13200(20)	13600	14000	14500	15000	15500(28)	16000	16500	17000	17500	18000	18500(36)	KG
	25400	26800	27600	29100(20)	30000	30900	32000	33100	34200(28)	35300	36400	37500	38600	39700	40800(36)	LBS



Scraper – Radial



TB516

TL568+

Tire Size Designation	Pattern	Star Rating	Ind Code	Rim Width & Flange	Min. Dual Spacing		Approximate Inflated Dimensions				Loaded Dimensions		Tread Depth		Performance Capability (TKPH)			Type	
							Overall Width		Overall Diameter		Static Load Rad								
							in	mm	in	mm	in	mm	in	mm	32nds	mm	T1	T2	T3
29.5R29	TB516	*	L-3	25.00/3.5			29.5	749	77.8	1975	31.8	807	47.9	38.0				TL	
	TB516	*	E-3	25.00/3.5			29.5	749	77.8	1975	34.5	876	47.9	38.0				TL	
	TB516	**	E-3	25.00/3.5			29.5	749	77.8	1975	31.8	807	47.9	38.0				TL	
	TB516	**	L-3	25.00/3.5			29.5	749	77.8	1975	34.5	876	47.9	38.0	200	252	330	TL	
33.25R29	TL568+	**	E-3	27.00/3.5			33.3	845	82.3	2090			55.4	44.0	310	390	490	TL	

Note: Several types of tread compounds. Type T1: Low speed, highly resistance to abrasion and cutting. Type T2: A compromise between resistance to abrasion and cutting. Type T3: Engineered to cope with high speed travel on long hauls. For which tread compound to use, the customer can contact the Radial OTR technical department of Triangle Group.

10 KM/H (5 MPH)								50 KM/H (30 MPH)								
29.5R29	400	425	450	475	500	525	550	575	275	300	325	350	375	400	425	KPa
	58	62	65	69	73	76	80	83	40	44	47	51	54	58	62	PSI
	16500	17000	18000	18500	19500*	20000	20600	21200	9250	9750	10300	10900	11500*	12150	12500	KG
	36400	37500	39700	40800	43000*	44100	45400	46700	20400	21500	22700	24000	25400*	26800	27600	LBS
	600	625	650						450	475	500	525				KPa
	87	91	94						65	69	73	76				PSI
33.25R29	22400	23000	23600**						13200	13600	14500	15000**				KG
	49400	50700	52000**						29100	30000	32000	33100**				LBS
									275	300	325	350	375	400	425	KPa
									40	44	47	51	54	58	62	PSI
									11200	12150	12850	13600	14000*	15000	15500	KG
									24700	26800	28300	30000	30900*	33100	34200	LBS
								450	475	500	525				KPa	
								65	69	73	76				PSI	
								16500	17000	17500	18500**				KG	
								36400	37500	38600	40800**				LBS	

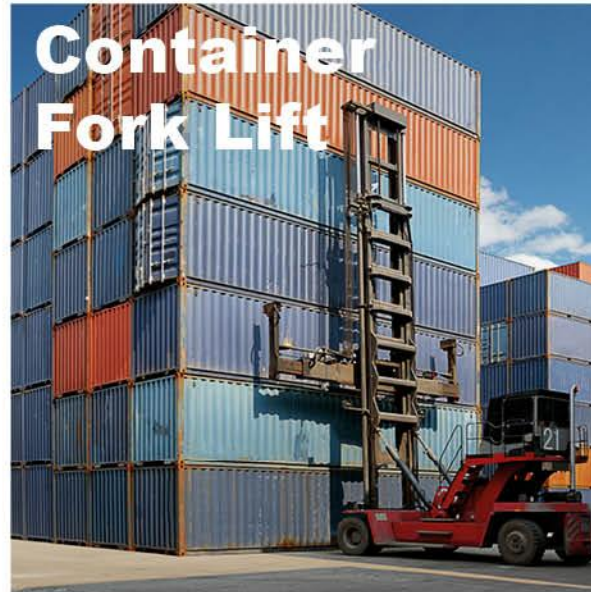


Lifting Equipment



Straddle Carrier

Radial __ 68 – 69
Bias ____ 70 – 71



Container Fork Lift

Radial __ 72 – 73
Bias ____ 74 – 75



Reach Stacker

Radial __ 76 – 77
Bias ____ 78 – 79



Straddle Carrier – Radial



TL558S

Tire Size Designation	Pattern	Star Rating	Ind Code	Rim Width & Flange	Min. Dual Spacing		Approximate Inflated Dimensions				Loaded Dimensions		Tread Depth		Performance Capability (TKPH)			Type	
							Overall Width		Overall Diameter		Static Load Rad								
							in	mm	in	mm	in	mm	in	mm	32nds	mm	T1	T2	T3
16.00R25	TL558S	*	E-4	11.25/2.0	20.2	513	17.0	432	61.0	1548			64.3	51.0				TL	
	TL558S	**	E-4	11.25/2.0	20.2	513	17.0	432	61.0	1548			64.3	51.0				TL	
	TL558S	***	E-4	11.25/2.0	20.2	513	17.0	432	61.0	1548			64.3	51.0				TL	
18.00R25	TL558S	*	E-4	13.00/2.5	23.1	587	19.6	498	65.9	1673			68.0	54.0				TL	
	TL558S	**	E-4	13.00/2.5	23.1	587	19.6	498	65.9	1673			68.0	54.0				TL	
	TL558S	***	E-4	13.00/2.5	23.1	587	19.6	498	65.9	1673			68.0	54.0	85	105	130	TL	

Note: Several types of tread compounds. Type T1: Low speed, highly resistance to abrasion and cutting. Type T2: A compromise between resistance to abrasion and cutting. Type T3: Engineered to cope with high speed travel on long hauls. For which tread compound to use, the customer can contact the Radial OTR technical department of Triangle Group.

		10 KM/H (5 MPH)								50 KM/H (30 MPH)									
16.00R25	525	550	575	600	625	650	675	700											KPa
	76	80	83	87	91	94	98	102											PSI
	8750	9000*	9250	9750	10000	10300	10600	10900											KG
	19300	19800*	20400	21500	22000	22700	23400	24000											LBS
	725	750	775	800	825	850	875	900											KPa
	105	109	112	116	120	123	127	131											PSI
11200	11500	11800	12150	12150**	12450	12850	13250***											KG	
24700	25400	26000	26800	26800**	27400	28300	29200***											LBS	
18.00R25	525	550	575	600	625	650	675	700	450	475	500	525	550	575	600	KPa			
	76	80	83	87	91	94	98	102	65	69	73	76	80	83	87	PSI			
	11200	11800*	12150	12500	12850	13200	13600	14000	6700	7100*	7300	7500	7750	8000	8250	KG			
	24700	26000*	26800	27600	28300	29100	30000	30900	14800	15700*	16100	16500	17100	17600	18200	LBS			
	725	750	775	800	825	850	875	900	625	650	675	700				KPa			
	105	109	112	116	120	123	127	131	91	94	98	102				PSI			
14500	15000	15000	15500	16000**	16350	16750	17100***	8500	8750	9000	9250**				KG				
32000	33100	33100	34200	35300**	36000	36900	37700***	18700	19300	19800	20400**				LBS				



Straddle Carrier – Bias

Straddle Carrier

Container Fork Lift

Reach Stacker



TL612

TL510

Tire Size Designation	Pattern	Ply Rating	Ind Code	Rim Width & Flange	Min. Dual Spacing		Approximate Inflated Dimensions				Loaded Dimensions		Tread Depth		Performance Capability (TKPH)			Type	
							Overall Width		Overall Diameter		Static Load Rad								
							in	mm	in	mm	in	mm	in	mm	32nds	mm	T1	T2	T3
16.00-25	TL612	28PR	E-3/L-3	11.25/2.0	20.2	513	16.9	430	58.9	1495			37.8	30.0				TT/TL	
18.00-25	TL510	40PR	E-4	13.00/2.5	23.1	587	19.7	500	65.9	1675			68.0	54.0				TL	

10 KM/H (5 MPH)								50 KM/H (30 MPH)								
16.00-25	475	500	525	550	575	600	625	650	275	300	325	350	375	400	425	KPa
	69	73	76	80	83	87	91	93	40	44	47	51	54	58	62	PSI
	8750	9000	9500	9750	10000	10000	10300	10300	4375	4625	4875	5000	5300	5450	5600	KG
	19300	19800	20900	21500	20000	20000	22700	23400	9650	10200	10700	11000	11700	12000	12300	LBS
	675	700	725	750					450	475	500	525	550	575		KPa
	98	102	105	109					65	69	73	76	80	83		PSI
10900	11200	11200	11500(28)					5800	6000	6300	6500	6500	6700(28)		KG	
24000	24700	24700	25400(28)					12800	13200	13900	14300	14300	14800(28)		LBS	
18.00-25	475	500	525	550	575	600	625	650	275	300	325	350	375	400	425	KPa
	69	73	76	80	83	87	91	93	40	44	47	51	54	58	62	PSI
	11500	11800	12150	12500	12850	13200	13600	13600(28)	5600	6000	6300	6500	6900	7100	7300	KG
	25400	26000	26800	27600	28300	29100	30000	30000(28)	12300	13200	13900	14300	15200	15700	16100	LBS
	675	700	725	750	775	800	825	850	450	475	500	525	550	575	600	KPa
	98	102	105	109	112	116	119	123	65	69	73	76	80	83	87	PSI
	14000	14500	14500	15000(32)	15000	15500	15500	16000	7500	7750	8000(28)	8250	8500	8750(32)	9000	KG
	30900	32000	32000	33100(32)	33100	34100	34100	35200	16500	17100	17600(28)	18200	18700	19300(32)	19800	LBS
875	900	925	950					625	650	675	700				KPa	
126	130	133	137					91	93	98	102				PSI	
16000	16500	17000	17000(40)					9250	9250	9500	9750(40)				KG	
35200	36300	37400	37400(40)					20400	20400	20900	21400(40)				LBS	



Container Fork Lift – Radial

Straddle Carrier

Container Fork Lift

Reach Stacker



TL558S

Tire Size Designation	Pattern	Star Rating	Ind Code	Rim Width & Flange	Min. Dual Spacing		Approximate Inflated Dimensions				Loaded Dimensions		Tread Depth		Performance Capability (TKPH)			Type	
							Overall Width		Overall Diameter		Static Load Rad								
							in	mm	in	mm	in	mm	in	mm	32nds	mm	T1	T2	T3
16.00R25	TL558S	*	E-4	11.25/2.0	20.2	513	17.0	432	61.0	1548			64.3	51.0				TL	
	TL558S	**	E-4	11.25/2.0	20.2	513	17.0	432	61.0	1548			64.3	51.0				TL	
	TL558S	***	E-4	11.25/2.0	20.2	513	17.0	432	61.0	1548			64.3	51.0				TL	
18.00R25	TL558S	*	E-4	13.00/2.5	23.1	587	19.6	498	65.9	1673			68.0	54.0				TL	
	TL558S	**	E-4	13.00/2.5	23.1	587	19.6	498	65.9	1673			68.0	54.0				TL	
	TL558S	***	E-4	13.00/2.5	23.1	587	19.6	498	65.9	1673			68.0	54.0	85	105	130	TL	

Note: Several types of tread compounds. Type T1: Low speed, highly resistance to abrasion and cutting. Type T2: A compromise between resistance to abrasion and cutting. Type T3: Engineered to cope with high speed travel on long hauls. For which tread compound to use, the customer can contact the Radial OTR technical department of Triangle Group.

10 KM/H (5 MPH)								50 KM/H (30 MPH)									
16.00R25	525	550	575	600	625	650	675	700									KPa
	76	80	83	87	91	94	98	102									PSI
	8750	9000*	9250	9750	10000	10300	10600	10900									KG
	19300	19800*	20400	21500	22000	22700	23400	24000									LBS
	725	750	775	800	825	850	875	900									KPa
	105	109	112	116	120	123	127	131									PSI
11200	11500	11800	12150	12150**	12450	12850	13250***									KG	
24700	25400	26000	26800	26800**	27400	28300	29200***									LBS	
18.00R25	525	550	575	600	625	650	675	700	450	475	500	525	550	575	600	KPa	
	76	80	83	87	91	94	98	102	65	69	73	76	80	83	87	PSI	
	11200	11800*	12150	12500	12850	13200	13600	14000	6700	7100*	7300	7500	7750	8000	8250	KG	
	24700	26000*	26800	27600		29100	30000	30900	14800	15700*	16100	16500	17100	17600	18200	LBS	
	725	750	775	800	825	850	875	900	625	650	675	700				KPa	
	105	109	112	116	120	123	127	131	91	94	98	102				PSI	
14500	15000	15000	15500	16000**	16350	16750	17100***	8500	8750	9000	9250**				KG		
32000	33100	33100	34200	35300**	36000	36900	37700***	18700	19300	19800	20400**				LBS		



Container Fork Lift – Bias



TL612



TL510

Tire Size Designation	Pattern	Ply Rating	Ind Code	Rim Width & Flange	Min. Dual Spacing		Approximate Inflated Dimensions				Loaded Dimensions		Tread Depth		Performance Capability (TKPH)			Type	
							Overall Width		Overall Diameter		Static Load Rad								
							in	mm	in	mm	in	mm	in	mm	32nds	mm	T1	T2	T3
14.00-24	TL612	16, 24PR	E-3/L-3	10	17.7	450	14.8	375	53.9	1370			37.8	30.0				TT	TL
18.00-25	TL510	40PR	E-4	13.00/2.5	23.1	587	19.7	500	65.9	1675			68.0	54.0				TL	

10 KM/H (5 MPH)								50 KM/H (30 MPH)								
14.00-24	475	500	525	550	575	600	625	650	275	300	325	350	375	400	425	KPa
	69	73	76	80	83	87	91	93	40	44	47	51	54	58	62	PSI
	6700	6900	7100	7300(16)	7500	7750	8000	8250	3350	3550	3750	3875	4000	4250	4375	KG
	14800	15200	15700	16100(16)	16500	17100	17600	18200	7400	7850	8250	8550	8800	9350	9650	LBS
	875	900	925						450	475	500	525	550	575	600	KPa
	126	130	133						65	69	73	76	80	83	87	PSI
	9750	9750	10000(28)						4500	4625	4750	4875	5000	5150(24)	5350	KG
	21400	21400	22000(28)						9900	10200	10500	10700	11000	11300(24)	11800	LBS
									625	650						KPa
									91	93						PSI
								5350	5600(28)						KG	
								11800	12300(28)						LBS	
18.00-25	475	500	525	550	575	600	625	650	275	300	325	350	375	400	425	KPa
	69	73	76	80	83	87	91	93	40	44	47	51	54	58	62	PSI
	11500	11800	12150	12500	12850	13200	13600	13600(28)	5600	6000	6300	6500	6900	7100	7300	KG
	25400	26000	26800	27600	28300	29100	30000	30000(28)	12300	13200	13900	14300	15200	15700	16100	LBS
	675	700	725	750	775	800	825	850	450	475	500	525	550	575	600	KPa
	98	102	105	109	112	116	119	123	65	69	73	76	80	83	87	PSI
	14000	14500	14500	15000(32)	15000	15500	15500	16000	7500	7750	8000(28)	8250	8500	8750(32)	9000	KG
	30900	32000	32000	33100(32)	33100	34100	34100	35200	16500	17100	17600(28)	18200	18700	19300(32)	19800	LBS
	875	900	925	950					625	650	675	700				KPa
	126	130	133	137					91	93	98	102				PSI
16000	16500	17000	17000(40)					9250	9250	9500	9750(40)				KG	
35200	36300	374000	374000(40)					20400	20400	20900	21400(40)				LBS	



Reach Stacker – Radial

Straddle Carrier

Container Fork Lift

Reach Stacker



TL558S

Tire Size Designation	Pattern	Star Rating	Ind Code	Rim Width & Flange	Min. Dual Spacing		Approximate Inflated Dimensions				Loaded Dimensions		Tread Depth		Performance Capability (TKPH)			Type	
							Overall Width		Overall Diameter		Static Load Rad								
							in	mm	in	mm	in	mm	in	mm	32nds	mm	T1	T2	T3
16.00R25	TL558S	*	E-4	11.25/2.0	20.2	513	17.0	432	61.0	1548			64.3	51.0				TL	
	TL558S	**	E-4	11.25/2.0	20.2	513	17.0	432	61.0	1548			64.3	51.0				TL	
	TL558S	***	E-4	11.25/2.0	20.2	513	17.0	432	61.0	1548			64.3	51.0				TL	
18.00R25	TL558S	*	E-4	13.00/2.5	23.1	587	19.6	498	65.9	1673			68.0	54.0				TL	
	TL558S	**	E-4	13.00/2.5	23.1	587	19.6	498	65.9	1673			68.0	54.0				TL	
	TL558S	***	E-4	13.00/2.5	23.1	587	19.6	498	65.9	1673			68.0	54.0	85	105	130	TL	

Note: Several types of tread compounds. Type T1: Low speed, highly resistance to abrasion and cutting. Type T2: A compromise between resistance to abrasion and cutting. Type T3: Engineered to cope with high speed travel on long hauls. For which tread compound to use, the customer can contact the Radial OTR technical department of Triangle Group.

		10 KM/H (5 MPH)								50 KM/H (30 MPH)									
16.00R25		525	550	575	600	625	650	675	700									KPa	
		76	80	83	87	91	94	98	102									PSI	
		8750	9000*	9250	9750	10000	10300	10600	10900									KG	
		19300	19800*	20400	21500	22000	22700	23400	24000									LBS	
		725	750	775	800	825	850	875	900									KPa	
		105	109	112	116	120	123	127	131									PSI	
	11200	11500	11800	12150	12150**	12450	12850	13250***									KG		
	24700	25400	26000	26800	26800**	27400	28300	29200***									LBS		
18.00R25		525	550	575	600	625	650	675	700	450	475	500	525	550	575	600	KPa		
		76	80	83	87	91	94	98	102	65	69	73	76	80	83	87	PSI		
		11200	11800*	12150	12500	12850	13200	13600	14000	6700	7100*	7300	7500	7750	8000	8250	KG		
		24700	26000*	26800	27600		29100	30000	30900	14800	15700*	16100	16500	17100	17600	18200	LBS		
		725	750	775	800	825	850	875	900	625	650	675	700				KPa		
		105	109	112	116	120	123	127	131	91	94	98	102				PSI		
	14500	15000	15000	15500	16000**	16350	16750	17100***	8500	8750	9000	9250**				KG			
	32000	33100	33100	34200	35300**	36000	36900	37700***	18700	19300	19800	20400**				LBS			



Reach Stacker – Bias



TL510

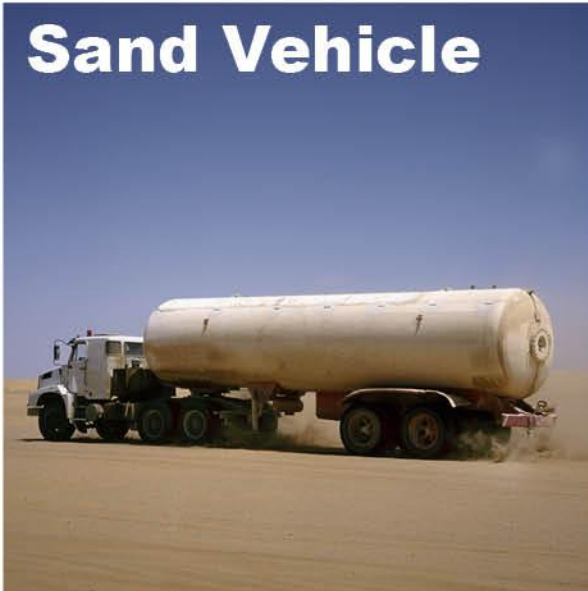
Tire Size Designation	Pattern	Ply Rating	Ind Code	Rim Width & Flange	Min. Dual Spacing		Approximate Inflated Dimensions				Loaded Dimensions		Tread Depth		Performance Capability (TKPH)			Type	
							Overall Width		Overall Diameter		Static Load Rad								
							in	mm	in	mm	in	mm	in	mm	32nds	mm	T1	T2	T3
18.00-25	TL510	40PR	E-4	13.00/2.5	23.1	587	19.7	500	65.9	1675			68.0	54.0				TL	

10 KM/H (5 MPH)								50 KM/H (30 MPH)								
18.00-25	475	500	525	550	575	600	625	650	275	300	325	350	375	400	425	KPa
	69	73	76	80	83	87	91	93	40	44	47	51	54	58	62	PSI
	11500	11800	12150	12500	12850	13200	13600	13600(28)	5600	6000	6300	6500	6900	7100	7300	KG
	25400	26000	26800	27600	28300	29100	30000	30000(28)	12300	13200	13900	14300	15200	15700	16100	LBS
	675	700	725	750	775	800	825	850	450	475	500	525	550	575	600	KPa
	98	102	105	109	112	116	119	123	65	69	73	76	80	83	87	PSI
	14000	14500	14500	15000(32)	15000	15500	15500	16000	7500	7750	8000(28)	8250	8500	8750(32)	9000	KG
	30900	32000	32000	33100(32)	33100	34100	34100	35200	16500	17100	17600(28)	18200	18700	19300(32)	19800	LBS
875	900	925	950					625	650	675	700				KPa	
126	130	133	137					91	93	98	102				PSI	
16000	16500	17000	17000(40)					9250	9250	9500	9750(40)				KG	
35200	36300	374000	374000(40)					20400	20400	20900	21400(40)				LBS	

A yellow steamroller is shown from a low angle, positioned on a dirt surface. The machine features a large, cylindrical metal drum in the foreground and a smaller, treaded tire on the left. The operator's cab is visible, equipped with a steering wheel and a protective canopy. The background consists of a vast, cloudy sky with soft, diffused light, suggesting an overcast day. A dark blue horizontal band is overlaid across the middle of the image, containing the text.

Particular Application

Sand Vehicle



Bias ____ 82 – 83

Compactor



Bias ____ 84 – 85



Sand Vehicle - Bias



TR139



TB812



TR128

Tire Size Designation	Pattern	Ply Rating	Ind Code	Rim Width & Flange	Min. Dual Spacing		Approximate Inflated Dimensions				Loaded Dimensions		Tread Depth		Performance Capability (TKPH)			Type	
							Overall Width		Overall Diameter		Static Load Rad								
							in	mm	in	mm	in	mm	in	mm	32nds	mm	T1	T2	T3
21.00-25	TR139	16PR	E-7	15.00/3.0			22.4	570	66.3	1685			17.6	14.0				TL	
24-21	TB812	14PR	R-3	18.0/1.5			24.0	610	53.9	1370			22.7	18.0				TT	
27.25-21	TR139	16PR	E-7	19.50/1.5			27.0	685	59.4	1510			20.2	16.0				TL	
66x44.00-25	TR128	20, 24PR	E-7	36.0TH			44.0	1118	67.0	1702			12.6	10.0				TL	
66x43.00-25	TL526	20PR	HF-3	36.0TH			43.0	1054	67.0	1702			70.6	56.0				TL	

10 KM/H (30 MPH)

66X44.00-25	345																		KPa
	50																		PSI
	10000(24)																		KG
	22000(24)																		LBS

50 KM/H (30 MPH)

21.00-25	100	140	170	210	240	70													KPa
	15	20	25	30	35	10													PSI
	4530	4890	5560	6190	6770(16)	3250													KG
	9990	10780	12260	13640	14920(16)	7170													LBS
24-21	100	140	70																KPa
	15	20	10																PSI
	3300	3900(14)	2600																KG
	7270	8600(14)	5730																LBS
27.25-21	100	140	170	70															KPa
	15	20	25	10															PSI
	4285	5070	5780(16)	3380															KG
	9450	11180	12740(16)	7460															LBS
66X44.00-25	100	140	170	210	240	275	345												KPa
	15	20	25	30	35	40	50												PSI
	3450(6)	4125	4625	5150	5800	6150(16)	7020(20)												KG
	7600(6)	9100	10200	11440	12800	13600(16)	15200(20)												LBS
66X43.00-25	345																		
	50																		
	6700(20)																		
	14800(20)																		
1300X530-533	400																		
	58																		
	5600																		
	12320																		



Compactor - Bias



TB812



TB822

Tire Size Designation	Pattern	Ply Rating	Ind Code	Rim Width & Flange	Min. Dual Spacing		Approximate Inflated Dimensions				Loaded Dimensions		Tread Depth		Performance Capability (TKPH)			Type	
							Overall Width		Overall Diameter		Static Load Rad								
							in	mm	in	mm	in	mm	in	mm	32nds	mm	T1	T2	T3
23.1-26	TB812	10, 12, 14PR	R-3	DW20			23.1	587	62.2	1581			35.3	28.0				TL	
	TB822	12, 14PR	E-7	DW20			23.4	595	59.1	1500			18.9	15.0				TT	

40 KM/H (25 MPH)

23.1-26	110	120	140	150	170	180	190												KPa
	16	18	20	22	24	26	28												PSI
	2575	2725	2900(10)	3075	3250(12)	3450	3550(14)												KG
	5680	6000	6400(10)	6800	7150(12)	7600	7850(14)												LBS

Legend



Rigid Dump Truck



Mobile Crane



Reach Stacker



Articulated Dump Truck



Underground Equipment



Sand Vehicle



Motor Wheel Loader



Scraper



Compactor



Wheel Dozer



Straddle Carrier



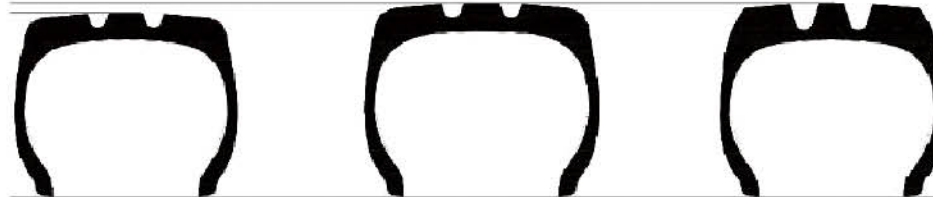
Grader



Container Fork Lift

DIFFERENT TREAD DEPTH

According to the classification of different tread depth, there are three series that can be chosen by their conditions of use and ground.



Normal Tread
E2-E3-L2-L3-G2

Deep Tread
E4

Extra Deep Tread
L5

00% design depth

150% design depth

250% design depth

DIFFERENT TYPES OF MACHINERY

CODE:

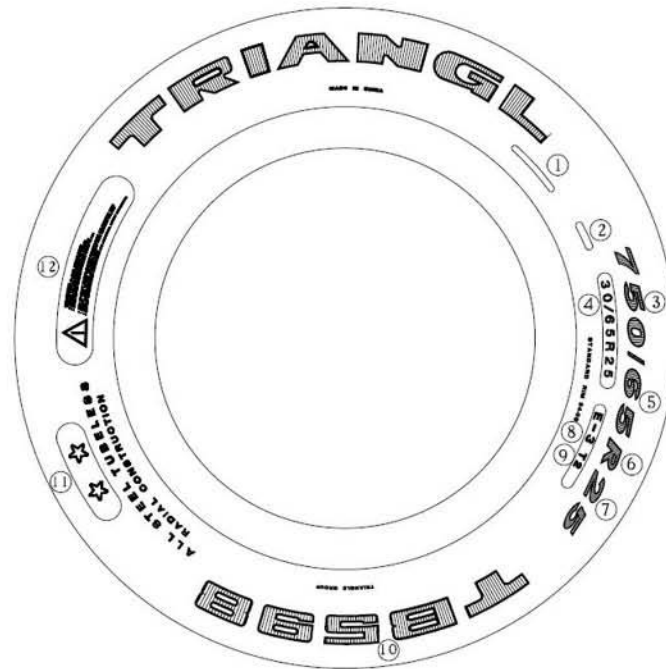
E:transport L:loader and bulldozer G:grader IND:industrial vehicle

INDEX:

S:smooth 2:traction 3:rock 4:rock(deep tread) 5:rock(very-deep tread)

CODE:	TREAD PATTERN	APPLICATION
E2	TRACTION	TRANSPORT
E3	ROCK	
E4	ROCK(deep tread)	
L2	TRACTION	LOADER BULLDOZER
L3	ROCK	
L4	ROCK(deep tread)	
L5	ROCK(very-deep tread)	
L4S	SMOOTH(deep tread)	
L5S	SMOOTH(very-deep tread)	
G2	TRACTION	GRADER
IND		INDUSTRIAL VEHICLE

TIRE MARKINGS



- ① Product code
- ② Tire number
- ③ Nominal section width of the tire (in mm): 750
- ④ Nominal section width of the tire (in inches): 30
- ⑤ Tire series: aspect ratio = 0.65
- ⑥ Radial structure: R
- ⑦ Rim diameter (in inches): 25
- ⑧ Identification code: E-3
- ⑨ Tire compound: T2
- ⑩ Tread pattern: TB598
- ⑪ Load capacity: ☆☆
- ⑫ Safety warning

DIFFERENT TRIANGLE OTR TIRE COMPOUNDS

T1: Particularly resistant to wearing, cuts and tread tearing at low speed.

T2A: Compromise solution between abrasion resistance and average speed with a higher wear resistance than T2.

T2B/T2: Compromise solution between abrasion resistance and average speed with a higher heat resistance than T2A.

T2C: Compromise solution between abrasion resistance and average speed with a higher heat resistance than T2B/T2.

T3: Adapted to running on long cycles at high speeds on well-maintained roads.

LOAD INDEX - SPEED SYMBOL

LOAD INDEX (LI) AND MAXIMUM LOAD (KG/LB)

The LOAD INDEX is a numerical code which indicates the maximum load a tyre can carry at the speed corresponding to its speed symbol, under specified conditions.

LI	MAXIMUM LOAD		LI	MAXIMUM LOAD		LI	MAXIMUM LOAD		LI	MAXIMUM LOAD		LI	MAXIMUM LOAD	
	KG	LB		KG	LB		KG	LB		KG	LB		KG	LB
120	1400	3090	150	3350	7390	180	8000	17640	210	19000	41890	240	45000	99210
121	1450	3200	151	3450	7610	181	8250	18190	211	19500	43000	241	46250	101960
122	1500	3310	152	3550	7830	182	8500	18740	212	20000	44100	242	47500	104720
123	1550	3420	153	3650	8050	183	8750	19290	213	20600	45420	243	48750	107470
124	1600	3530	154	3750	8270	184	9000	19840	214	21200	46750	244	50000	110250
125	1650	3640	155	3875	8540	185	9250	20390	215	21800	48070	245	51500	113540
126	1700	3750	156	4000	8820	186	9500	20940	216	22400	49390	246	53000	117950
127	1750	3860	157	4125	9090	187	9750	21500	217	23000	50700	247	54500	120150
128	1800	3970	158	4250	9370	188	10000	22050	218	23600	52040	248	56000	123480
129	1850	4080	159	4375	9650	189	10300	22710	219	24300	53580	249	58000	127890
130	1900	4190	160	4500	9920	190	10600	23370	220	25000	55120	250	60000	132300
131	1950	4300	161	4625	10200	191	10900	24030	221	25750	56780	251	61500	135580
132	2000	4410	162	4750	10470	192	11200	24690	222	26500	58430	252	63000	138890
133	2060	4540	163	4875	10750	193	11500	25360	223	27250	60070	253	65000	143300
134	2120	4670	164	5000	11020	194	11800	26020	224	28000	61740	254	67000	147710
135	2180	4810	165	5150	11350	195	12150	26790	225	29000	63940	255	69000	152120
136	2240	4940	166	5300	11630	196	12500	27560	226	30000	66150	256	71000	156530
137	2300	5070	167	5450	12020	197	12850	28330	227	30750	67790	257	73000	160930
138	2360	5200	168	5600	12350	198	13200	29100	228	31500	69460	258	75000	165340
139	2430	5360	169	5800	12790	199	13600	29990	229	32500	71660	259	77500	170660
140	2500	5510	170	6000	13230	200	14000	30870	230	33500	73870	260	80000	176400
141	2575	5680	171	6150	13560	201	14500	31970	231	34500	76070	261	82500	181880
142	2650	5840	172	6300	13890	202	15000	33070	232	35500	78280	262	85000	187390
143	2725	6010	173	6500	14330	203	15500	34180	233	36500	80480	263	87500	192900
144	2800	6170	174	6700	14770	204	16000	35280	234	37500	82690	264	90000	198450
145	2900	6390	175	6900	15210	205	16500	36380	235	38750	85430	265	92500	203920
146	3000	6610	176	7100	15650	206	17000	37480	236	40000	88200	266	95000	209440
147	3075	6780	177	7300	16090	207	17500	38590	237	41250	90940	267	97500	214950
148	3150	6950	178	7500	16530	208	18000	39690	238	42500	93710	268	100000	220500
149	3250	7170	179	7750	17090	209	18500	40790	239	43750	96470	269	103000	227370

SPEED SYMBOLS

The SPEED SYMBOL indicates the maximum speed at which the tyre can carry a load corresponding to its load index, under specified conditions.

CODE	A1	A2	A6	A8	B	C	D	E	F	G
Speed(km/h)	5	10	30	40	50	60	65	70	80	90
Speed(mph)	3	5	20	25	30	35	40	45	50	55

Examples of tyre marking:

17.5R25 TB516 170 A2: this tyre is able to carry 7100kg at a maximum speed of 10 km/h (15650 lb at 5 mph).

20.5R25 TB515 177 B: this tyre is able to carry 7300kg at a maximum speed of 50 km/h (16090 lb at 30 mph).

EQUIVALENCE OF RESISTANCE INDEX

To be used as a reference for the replacement of a bias ply tire by a TRIANGLE radial tire.

SIZE	TRANSPORT MACHINES PR	WORK MACHINES PR	SIZE	TRANSPORT MACHINES PR	WORK MACHINES PR	SIZE	TRANSPORT MACHINES PR	WORK MACHINES PR
13.00R25***	28	24	20.5R25*		24	24.00R35**	48	
14.00R24*		16	20.5R25**	28		35/65R33*	36	
14.00R24**			23.5R25*		28	750/65R25**		
14.00R24***	32	28	23.5R25**	32		750/65R25**		
14.00R25*			26.5R25*		32	775/65R29*		
14.00R25**			26.5R25**	32		775/65R29**		
14.00R25***	32		29.5R25*		34	875/65R29*		
16.00R25*			29.5R25**	34		875/65R29**		
16.00R25**	36		29.5R29*		34	27.00R49**	54	
16.00R25***			29.5R29**	40		33.00R51**	66	
17.5R25*		16	33.25R29*			36.00R51**	70	
17.5R25**	24	20	33.25R29**	44		37.00R57**	78	
18.00R25*		24	18.00R33**	40		40.00R57**	80	
18.00R25**	36		21.00R33**	44				
18.00R25***			21.00R35**	44				

TKPH(TMPH) method

TKPH(TMPH) definition

The TKPH(Ton Kilometer Per Hour) or TMPH(Ton Mile Per Hour) is an expression of the working capacity of a tire.

The TKPH(TMPH) is a function of the maximum allowed internal operating temperature of a tire.

A tire's TKPH(TMPH) depends on its design and varies according to size and type.

It is a function of load and the number of kilometers(miles) covered per hour at an ambient temperature of 38°C(100°F).

The formula to convert a TKPH rating to a TMPH rating is:TMPH=TKPH×0.685

The TKPH(TMPH) formula

TKPH(TMPH) =Average Load Per Tire×Average Speed for the shift

Average Load Per Tire= $\frac{\text{"Empty" per tire load in tons} + \text{"loaded" per tire load in tons}}{2}$

Average Speed= $\frac{\text{Round trip distance in kilometers(miles)} \times \text{number of trips}}{\text{Total Hours(in the shift)}}$

Example of a site TKPH(TMPH) calculation:

Conditions

- Empty per tire load=15.0 tons
- Loaded per tire load=30.0 tons
- Number of Hours worked=5.0 hours
- The shift hauls 10 loads.
- Each haul is 15 km, round trip.

Calculation

Average Per Tire Load= $\frac{15 \text{ Tons} + 30 \text{ Tons}}{2} = 22.5 \text{ Tons}$

Average Shift Speed= $\frac{5 \text{ Kilometers Per Trip} \times 10 \text{ Trips Per Shift}}{5.0 \text{ Hours Worked Per Shift}} = 30 \text{ Km/H}$

TKPH: 22.5Tons×30Km/H=675

TMPH: 675×0.685=462














Conclusion

To avoid heat problems tires must have a TKPH rating of 675 or higher.

If the tires on the machine are rated less than 675:

- Reduce speed
- Reduce load
- Change to tires with a higher TMPH rating.

Application Chart

	TB515	TB516	TB516S	TB526	TB526S	TB536	TB566S	TB586	TB589	TB598	TB598S	TB599	TB812	TB822	TL528	TL535S+	TL538S+	TL558S	TL559S+	TL568+	TL569	TL588	TM518	TSM5+	L-5S	TB516-II	TL502	TL508	TL510	TL516	TL520	TL558	TL612	TR128	TR139	TSM5	TB596						
		P6	P6 P8	P8 P10		P8				P10										P6	P10							P16										P12 P16	P12 P14				
		P18 P20							P22	P20																																	
		P26 P28 P30								P28 P30					P28	P30	P26 P28 P30	P28 P30			P28			P28					P32	P34									P32 P34		P26		
		P36 P38 P40												P38		P36 P38 P40	P38 P40				P38				P38	P41	P41 P42	P41 P42															
	P44					P44																						P46												P44			
								P50	P50																																P52	P54	
																P58 P60	P60							P58 P60	P62																	P58	
	P64																			P64																							
																	P68											P70													P70		
																		P72										P74													P74		
																		P76										P78															
																																									P82	P82	
																																										P84	P84

